



702/29 Margaret Street Rozelle NSW

3 2 2

Taking in sublime 180 degree northerly harbour views from every room this lavish waterfront apartment set in the highly sought after 'Waters Edge' building within the 'Balmain Shores' complex offers spacious modern interiors and an extensive outdoor entertaining balcony.

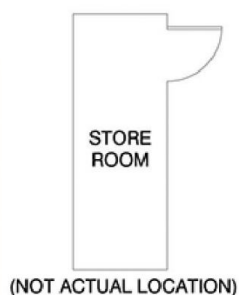
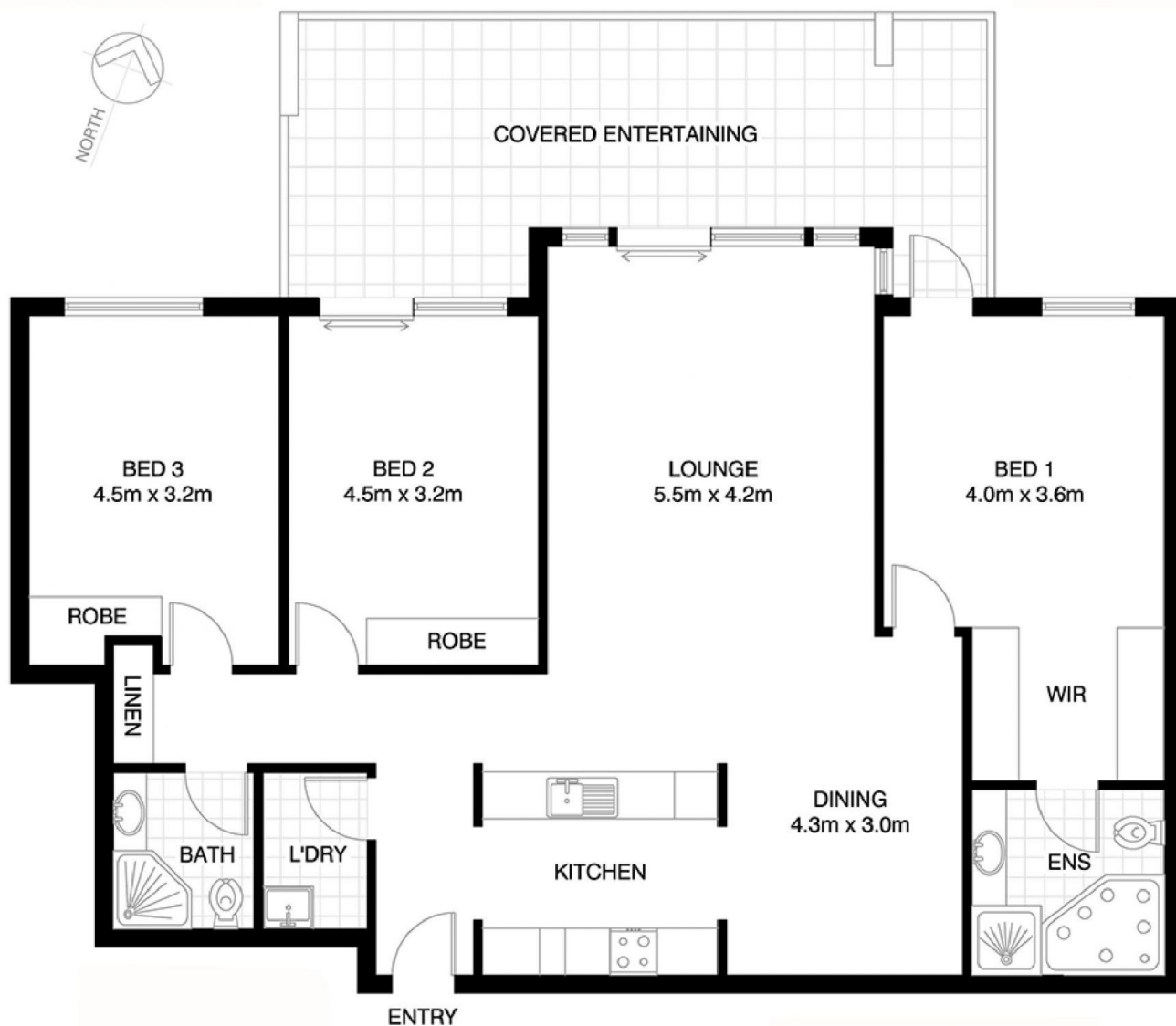
Property features include;

- Sun drenched interiors with a perfect northerly aspect
- Spacious open plan living
- Modern kitchen featuring pull out pantry, stainless appliances including gas cooktop, oven, rangehood, microwave, dishwasher & water views
- Master bedroom features en-suite bathroom with spa bath & separate shower, walk-in wardrobes & access onto balcony
- Second & third bedroom feature mirrored built-in

Price : SOLD FOR \$1,300,000
Building Size : 178 sqm
View : <https://www.balmainrealty.com/1P0012>



Scott Robertson
(02) 9818 8888



ROZELLE
702/29 MARGARET STREET
"Waters Edge" - BalmainShores

*NOTE: ALL DIMENSIONS SHOWN ARE APPROXIMATE AND SHOULD ONLY BE USED AS A GUIDE. NOT TO SCALE.