



707/27 Margaret Street Rozelle NSW

1 1

Boasting a large 15sqm courtyard this modern studio apartment found within the 'Balmain Shores' waterfront complex makes the ideal first home or excellent investment opportunity, currently returning \$380 per week.

In addition lies an opportunity to lease a undercover car space & lock up storage cage.

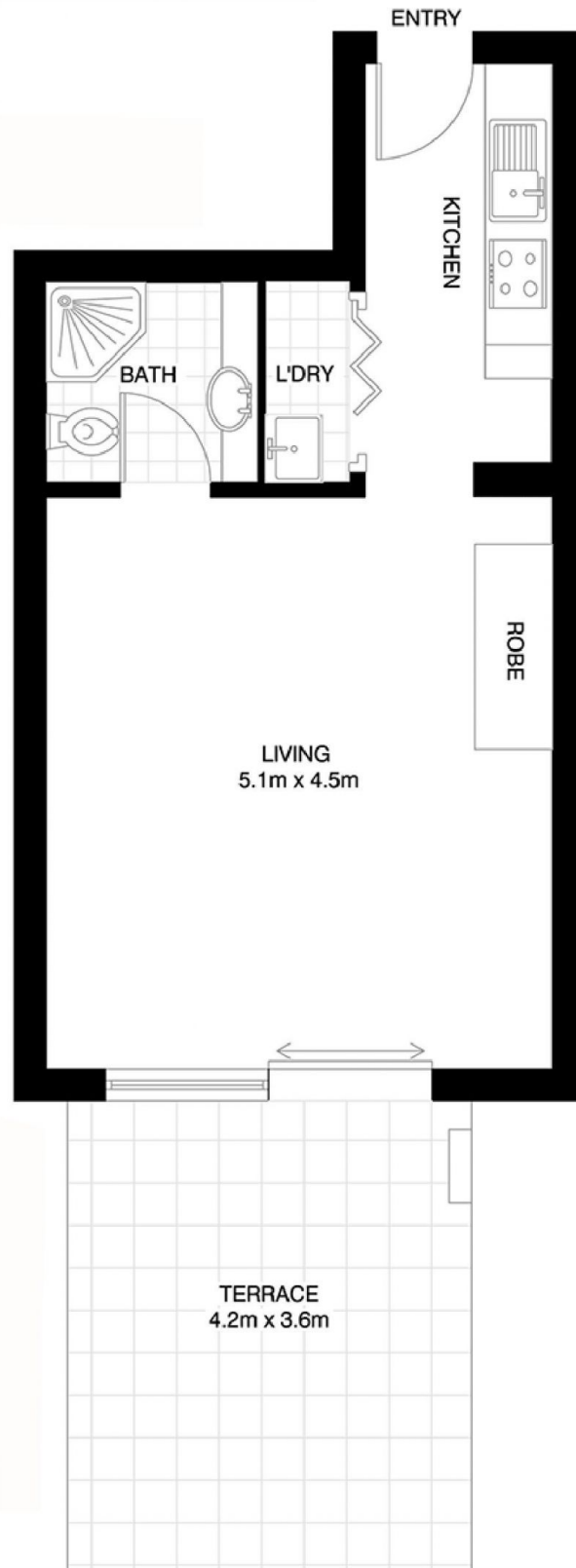
Property features include;

- 15sqm Courtyard
- Level walk-in access to building (no stairs)
- Spacious open plan living
- Bedroom area with built-in wardrobes
- Stylish kitchen featuring pull out pantry, stainless steel appliances including gas cooktop, rangehood exhaust, oven & dishwasher

Price : SOLD FOR \$405,000
Building Size : 49 sqm
View : <https://www.balmainrealty.com/1P0014>



Bronte Brown
(02) 9818 8888



ROZELLE
707/27 MARGARET STREET

*INTERNAL FLOOR AREA APPROX 34m²
*TERRACE AREA APPROX 15m²

*NOTE: ALL DIMENSIONS SHOWN ARE APPROXIMATE AND SHOULD ONLY BE USED AS A GUIDE. NOT TO SCALE.