



**303/28 Warayama Place Rozelle NSW**

1 1 1

Set within the popular Balmain Shores waterfront complex with access to resort like swimming pools and gymnasium this exceptionally well presented one bedroom apartment is positioned in a quiet location with a leafy & secluded outlook enjoying a sun drenched north easterly facing balcony.

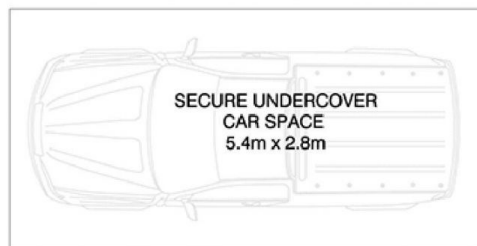
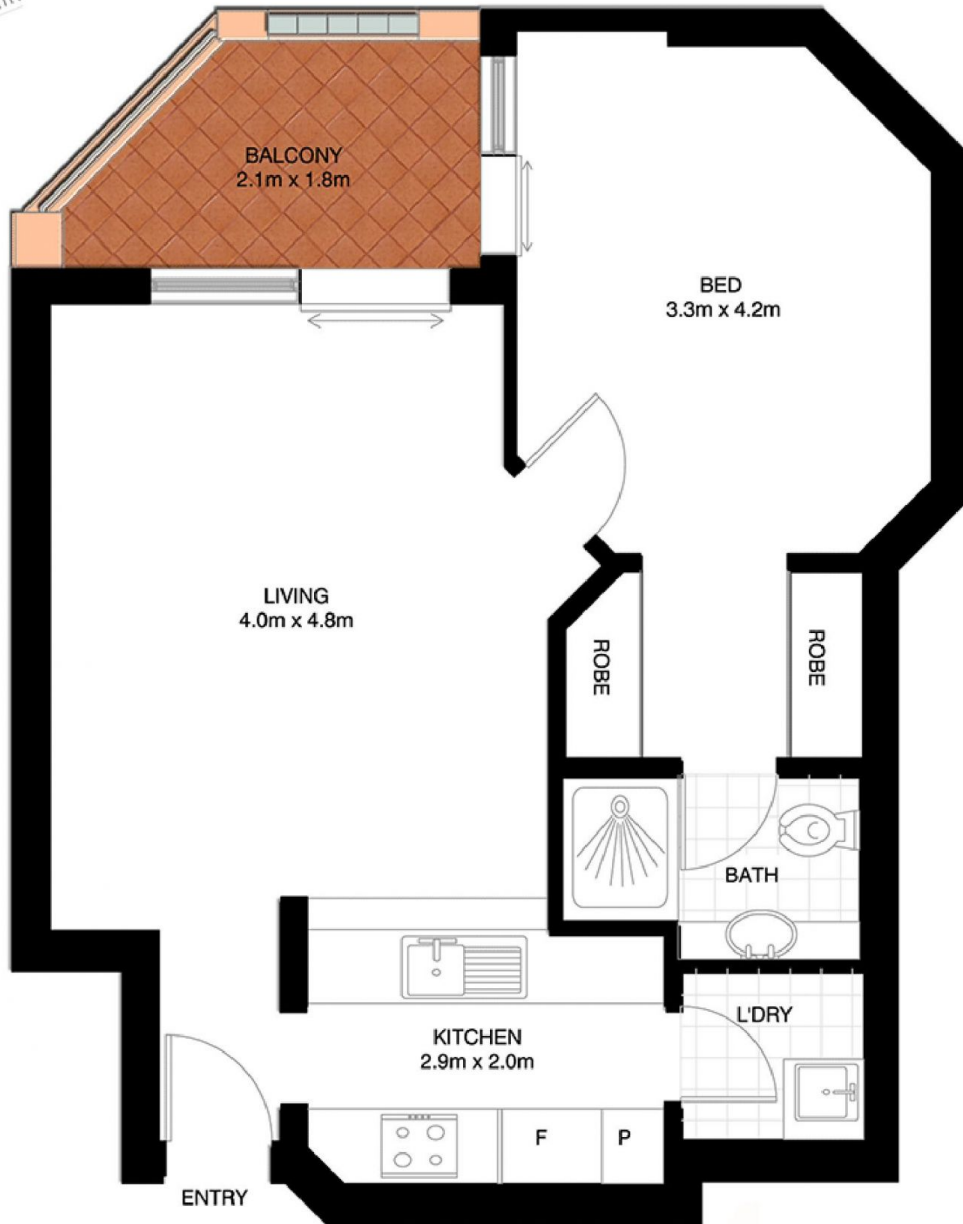
**Price** : SOLD FOR \$539,000  
**Building Size** : 77 sqm  
**View** : <https://www.balmainrealty.com/1P0018>

Property features;

- Polished timber floors throughout
- Light & spacious open plan living that leads onto a sunny & private balcony
- Functional kitchen featuring granite benchtops, pantry, gas cooktop, oven, rangehood and dishwasher
- Large bedroom featuring en-suite bathroom, walk-in wardrobes and direct access onto balcony
- Secure undercover car space with storage potential



**Scott Robertson**  
**(02) 9818 8888**



(NOT ACTUAL LOCATION)

**ROZELLE**  
**303/28 WARAYAMA AVENUE**  
**"Crestview" - Balmain Shores**

\*NOTE: ALL DIMENSIONS SHOWN ARE APPROXIMATE AND SHOULD ONLY BE USED AS A GUIDE. NOT TO SCALE.