

001/41 Terry Street Entry Via Yara Avenue ROZELLE NSW

1 1 1

This magnificent 1 bedroom apartment situated on the Balmain Peninsula allows you to enjoy the finer things all being just minutes travel from the city and a stones throw from the waterfront & "The Bay Run" offering over 8kms of walking and cycling tracks.

Property features;

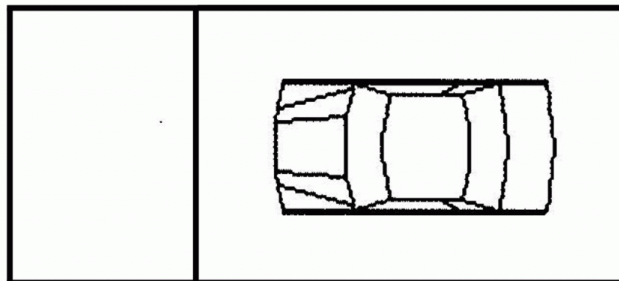
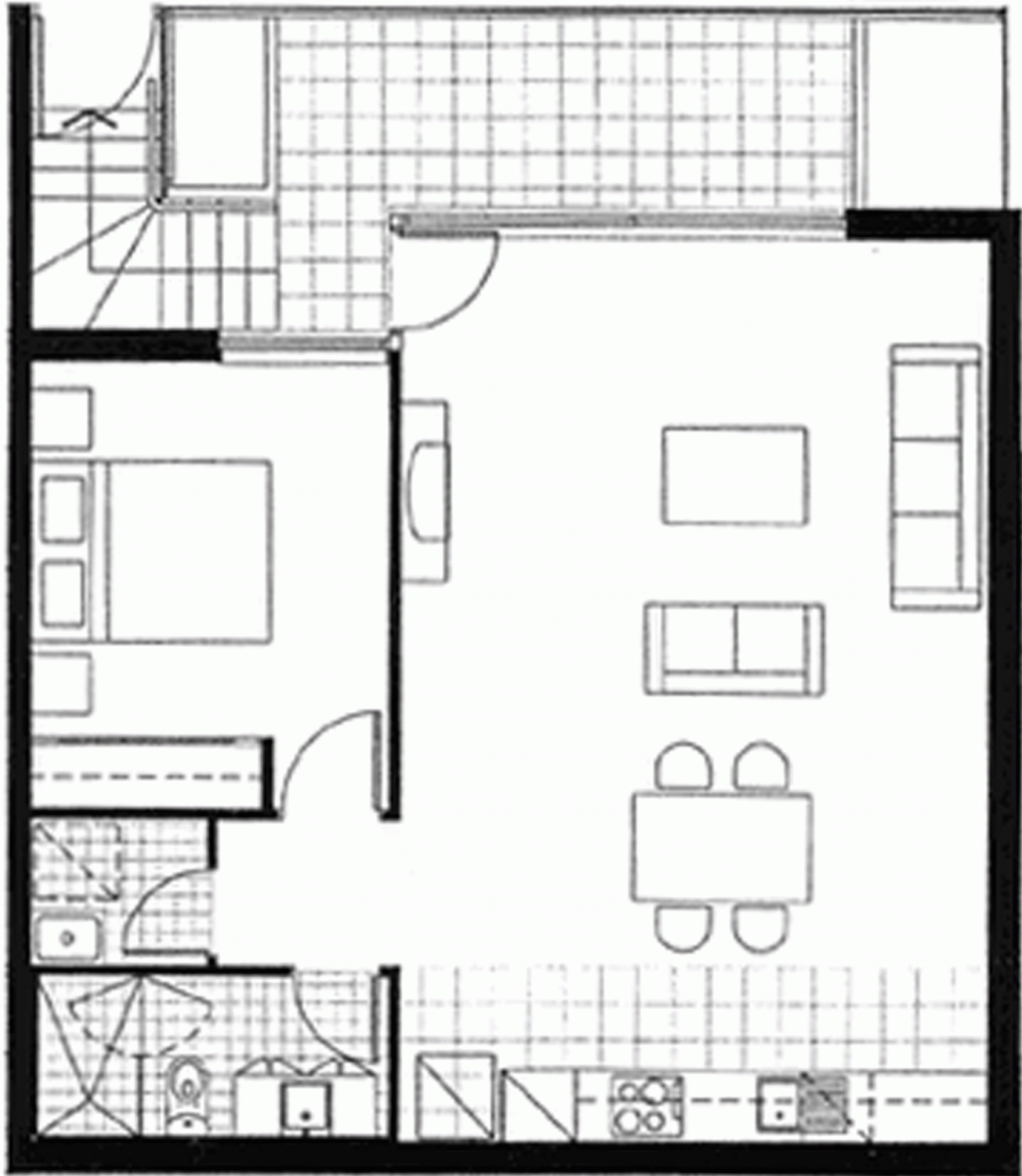
- * Spacious open plan living areas that flow into your own private courtyard
- * Reverse Cycle Air conditioning (Heating & Cooling)
- * Sunny north facing aspect ensures plenty of natural light (Apartment is on the quiet Yara Avenue side of building)
- * Stylish designer kitchen featuring stainless appliances including dishwasher, gas cooking & range hood exhaust
- * Double sized bedroom featuring built-in wardrobes

Price : \$450 per week

View : <https://www.balmainrealty.com/1P0454>



Jenny Chen-Robertson
(02) 9818 8888



SECURE PARKING + LOCK UP STORAGE

Every precaution has been taken to establish the accuracy of the included information, but does not constitute any representation by the vendor or agent. Prospective purchasers should make their own enquiries to verify the information contained in this document.