



139/5 Wulumay Close Balmain Cove ROZELLE NSW

4 3 4

FULLY FURNISHED WATERFRONT PENTHOUSE!
EXCLUSIVE LEASING OPPORTUNITY...
*** EXCLUSIVE FURNISHED WATERFRONT
PENTHOUSE AVAILABLE FOR LEASE****

Set over 305m2 this sensational North facing waterfront penthouse apartment located in the prestigious "Balmain Cove" waterfront estate boasts exceptionally spacious formal & informal living with an enormous outdoor deck ideal for entertaining on a grand scale.

exclusive resort lifestyle facilities including use of heated tropical swimming pools & a gymnasium surrounded by manicured gardens and parkland this location has it all.

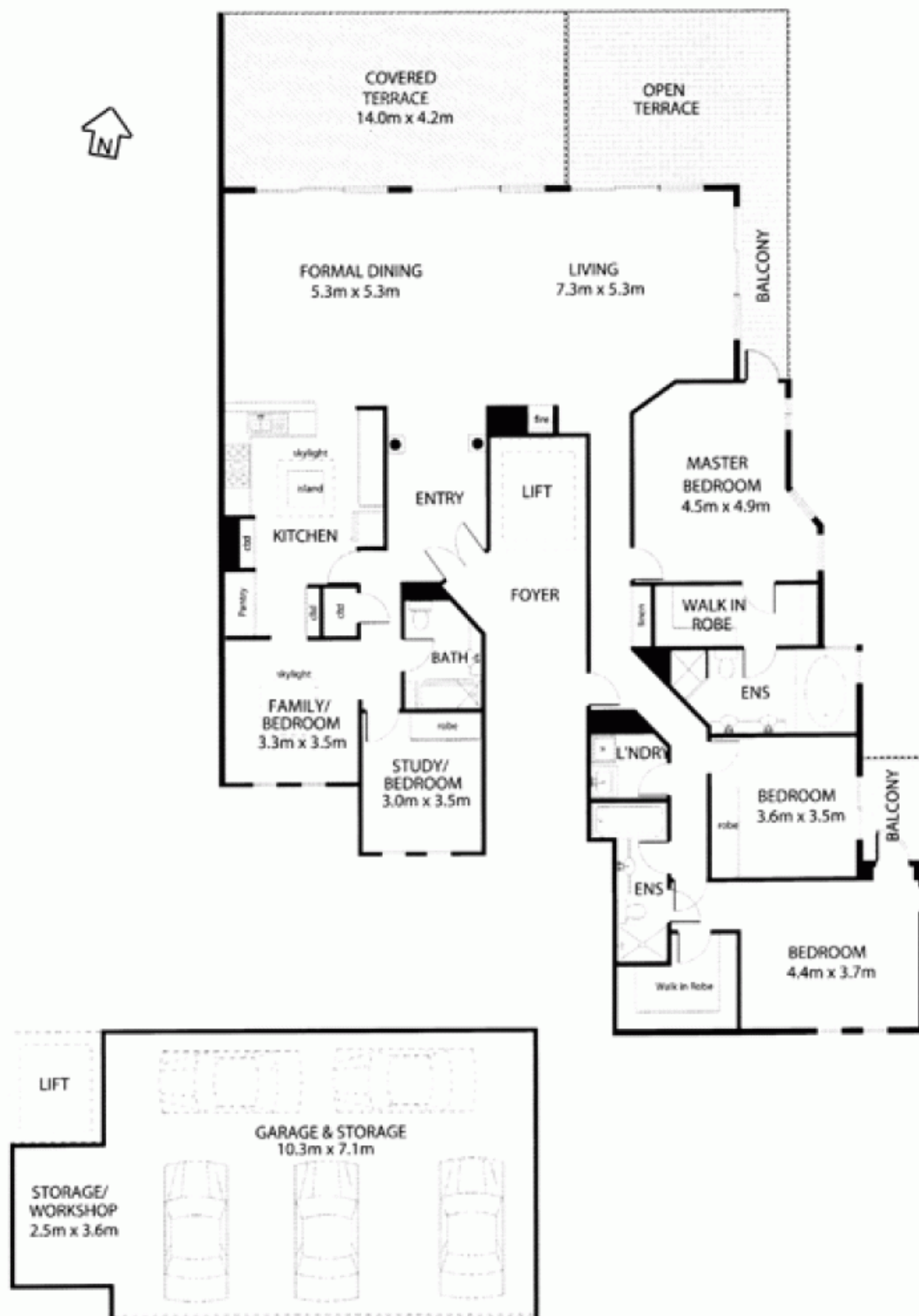
You will also have opportunity to lease a private deep water marina berth at \$200 per week for the boating enthusiast

Price : \$1,950 per week

View : <https://www.balmainrealty.com/1P0475>



Bronte Brown
(02) 9818 8888



Every precaution has been taken to establish the accuracy of the included information but does not constitute any representation by the vendor or agent. All interested parties should make their own enquiries to verify the information contained in this document. Refer to contract of sale for actual inclusions.