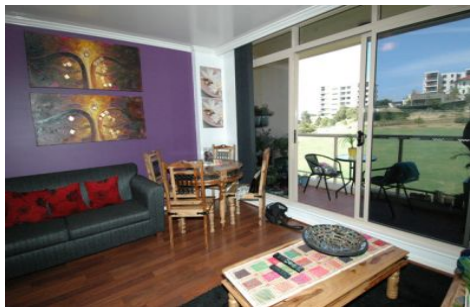


## ACTUAL VIEW FROM BALCONY



### 307/13 Warayama Place ROZELLE NSW

1 1 1

Immaculate condition one bedroom apartment situated on the waterfront. Spacious bedroom with mirrored built in wardrobe, windows with view of water and park. Walk out to own private terrace from lounge, perfect for relaxation. Contemporary kitchen with quality appliances, modern bathroom with combined laundry. Within 250m of corner store, King George Park, 2.5 hectares of parkland, direct city access via Victoria Road & bus stop. Enjoy the benefits of an indoor heated 20 m pool, adjoining a fully equipped gymnasium, outdoor heated pool, sauna & spa. Security intercom, & one secure car space.  
Available: 2/3/2009

**Price** : \$495 per week

**View** : <https://www.balmainrealty.com/1P0481>



**Bronte Brown**  
(02) 9818 8888