



206/1 Warayama Place Balmain Shores ROZELLE NSW

3  2  2 

Spectacular 3 Bedroom Apartment with Panoramic Harbour & Park Views

Occupying a commanding hilltop position taking in spectacular panoramic harbour & park views this stunning 3 bedroom apartment located in the highly desirable "Balmain Shores" waterfront development offers easy low maintenance living & is located just a short walk from Darling Street's cosmopolitan strip & is less than 10 minutes by bus from the Sydney CBD.

Property Features;

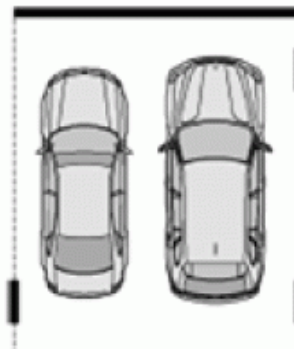
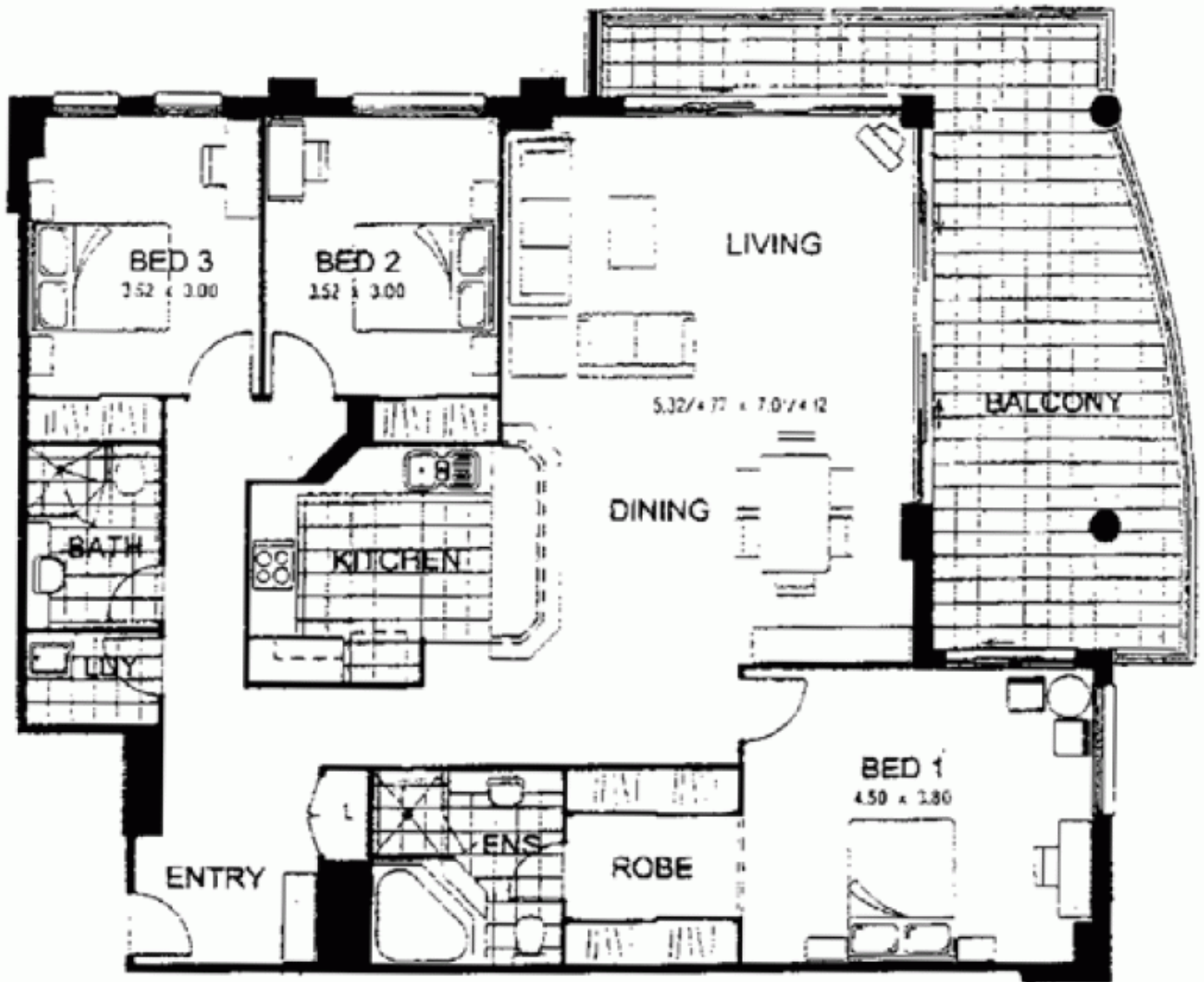
- * Large 26m2 North-East facing entertainer's balcony
- * Polished timber floors throughout
- * Large open plan living bathed in natural sunlight all day
- * Gourmet kitchen featuring granite bench tops, stainless

Price : \$880 per week

View : <https://www.balmainrealty.com/1P0508>



Bronte Brown
(02) 9818 8888



SECURITY CARSPACES

Every precaution has been taken to establish the accuracy of the included information, but does not constitute any representation by the vendor or agent. Prospective purchasers should make their own enquiries to verify the information contained in this document. Refer to contract of sale for actual inclusions.