






Level 2/8 Yara Ave Balmain Shores ROZELLE NSW

2  2  1 

PARTLY FURNISHED Modern Two bedroom Apartment in the resort style Balmain Shores with water glimpse

Price : \$650 PW **PARTLY FURNISHED**

View : <https://www.balmainrealty.com/1P0510>

Situated on the 2nd floor this gorgeous 2 bedroom apartment is immaculately presented with quality.

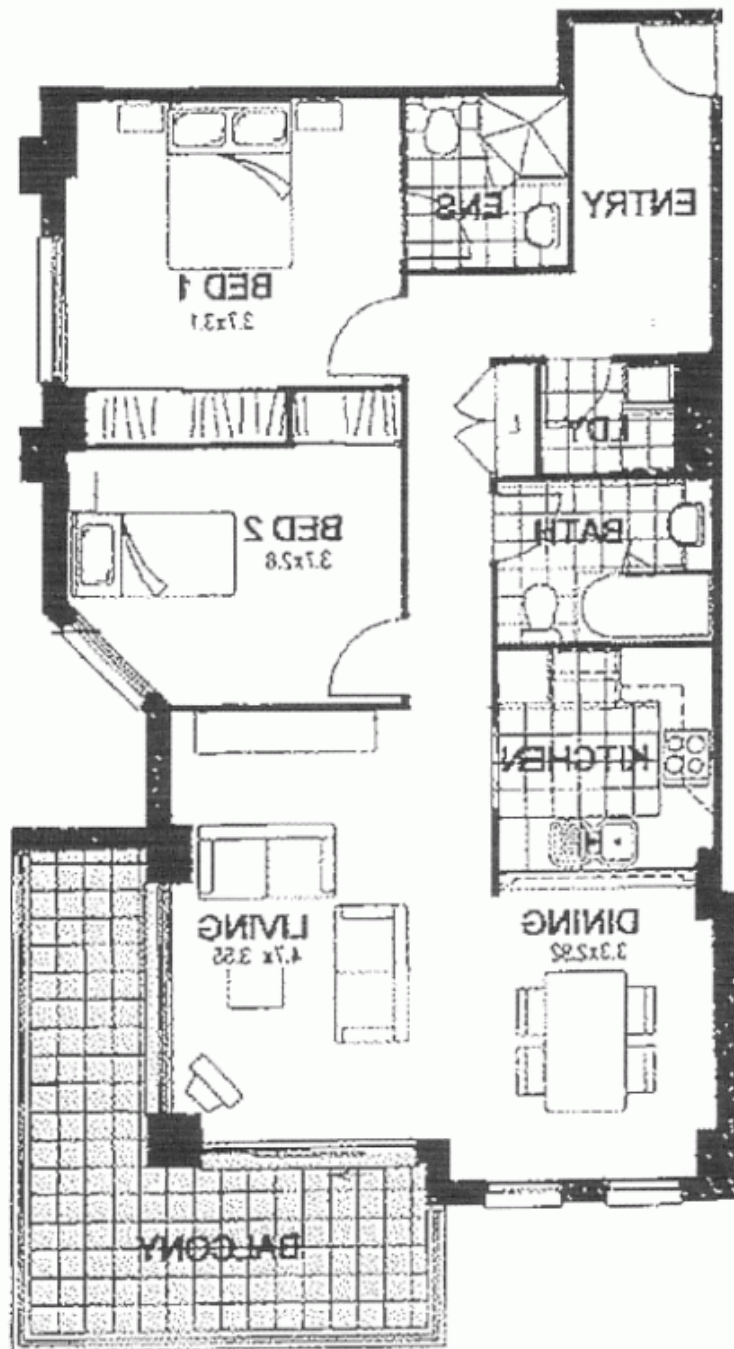
Property Features:

- Spacious separate lounge/dining areas
- Large Northeast facing terrace
- Ideal for the entertainers with water glimpses
- Main bedroom features ensuite, mirrored built-in wardrobes
- Modern appliances with gas cooking + dishwasher
- Internal laundry with dryer
- One undercover security car space.



Bronte Brown
(02) 9818 8888

FURNITURE INCLUDED:



8 YARA AVENUE, ROZELLE

Area:
 Total: 106sqm
 Internal: 76sqm
 Terrace: 12sqm
 Car Space: 18sqm

Images & floor plan illustration indicative only. Dimensions are approximate & not to scale.
 Refer to contract of sale for actual inclusions