



126/5 Wulumay Close ROZELLE NSW

2 2 2

This immaculate oversized luxury two bedroom plus study apartment is located in "ESPLANADES" of Balmain Cove development.

Positioned on the absolute waterfront overlooking the peaceful waters of Iron Cove toward Snapper & Spectacle Islands with a sun drenched due north aspect this stunning 2 bedroom apartment is truly breathtaking.

Property Features:

- * Large outdoor entertaining terrace (North Facing)
- * Panoramic views of tranquil waters & landscaped gardens
- * A living room of grand proportions and an open plan separate dining room or study
- * Master bedroom features ensuite and mirrored built-in wardrobes
- * Large second bedroom with mirrored built-in wardrobe

Price : \$950 per week

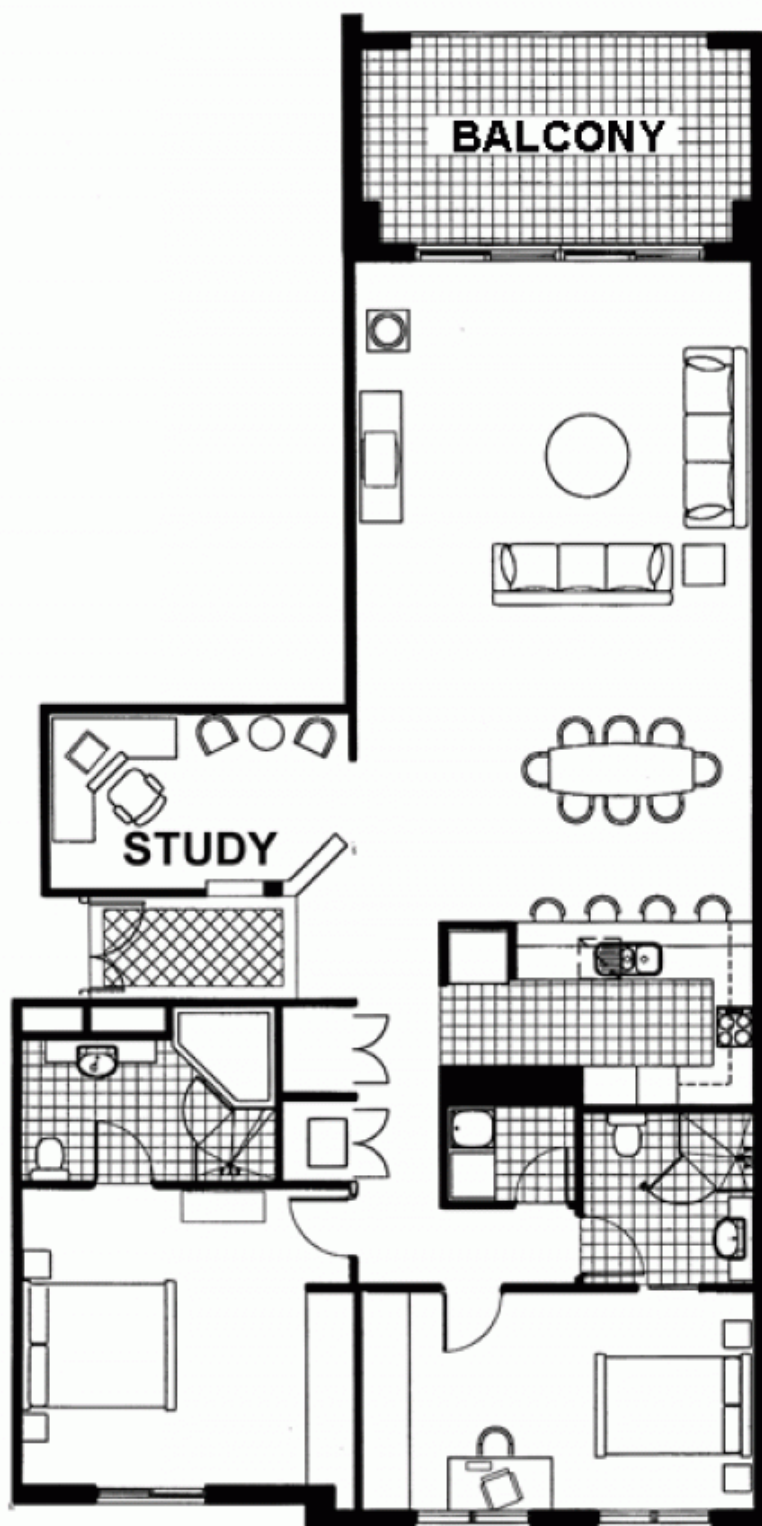
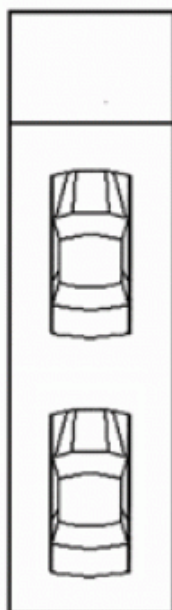
View : <https://www.balmainrealty.com/1P0516>



Bronte Brown
(02) 9818 8888



DOUBLE LOCK UP GARAGE + STORAGE



Every precaution has been made to establish the accuracy of the included information, but does not constitute and representation by the vendor or agent. Prospective purchasers should make their own enquiries to verify the information contained in this document. Refer to contract of sale for actual inclusions.