

**25/3 Wulumay Close 'BALMAIN COVE' ROZELLE NSW**

**3**  **2**  **2** 

Absolute Waterfront... TOP FLOOR... Stylish Renovations... Marina + Pools/Gym

**Price** : SOLD! SOLD! SOLD!

**View** : <https://www.balmainrealty.com/1P0771>

This top floor waterfront apartment set in the "The Landings" at Balmain Cove is amongst the most stunning and desirable residencies on the Balmain Peninsula.

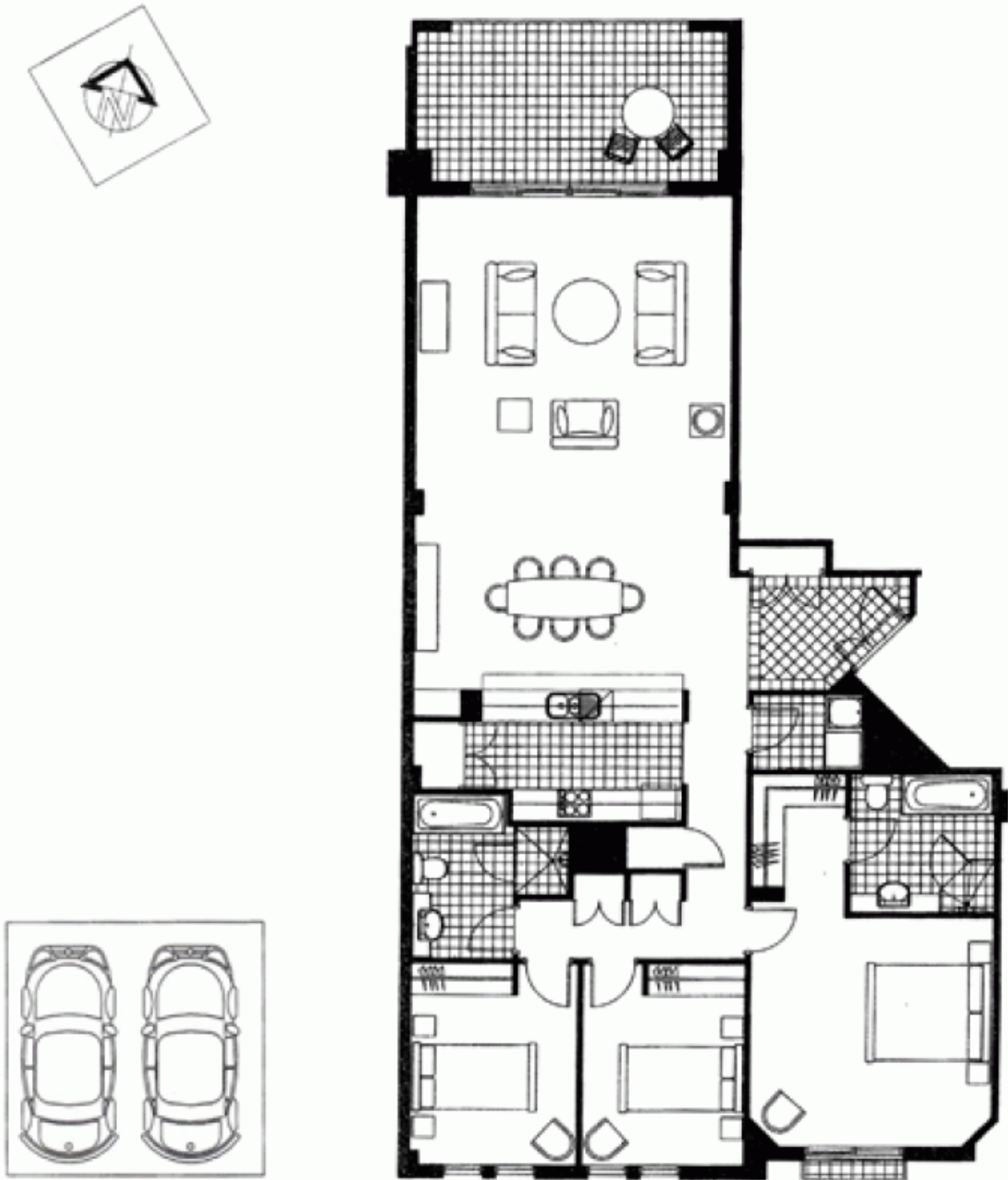
Taking in stunning 180 degree harbour views and exuding luxurious appointments throughout this property features large open plan living, gourmet fully renovated kitchen and modern interiors throughout.

Property Features;

- \* Polished timber floors
- \* Plantation shutters & quality blinds throughout
- \* Gourmet kitchen featuring stainless European appliances,



**Bronte Brown**  
**(02) 9818 8888**



## Double Remote Lock-up Garage

Every precaution has been taken to establish the accuracy of the included information, but does not constitute any representation by the vendor or agent. Prospective purchasers should make their own enquiries to verify the information contained in this document. Refer to contract of sale for actual inclusions.