



102/43 Terry Street 'ATELIER' ROZELLE NSW

1 1 1

One Bed + Large Study/2nd Bedroom... Terrace Style Design... Private Courtyard & Balcony

This stylish & sleek one bedroom apartment set over a very generous 92m2 of living space features an additional study room/2nd bedroom and offers terrace style living with private gate access through your own tropical garden courtyard.

Located on the Balmain Peninsula in the highly sought after "Atelier" building, just 4 years old this contemporary & chic apartment features all the latest mod cons.

Property Features;

- * Large separate study room/2nd bedroom
- * Sun-filled open plan design

Price : SOLD SOLD SOLD

View : <https://www.balmainrealty.com/1P0778>



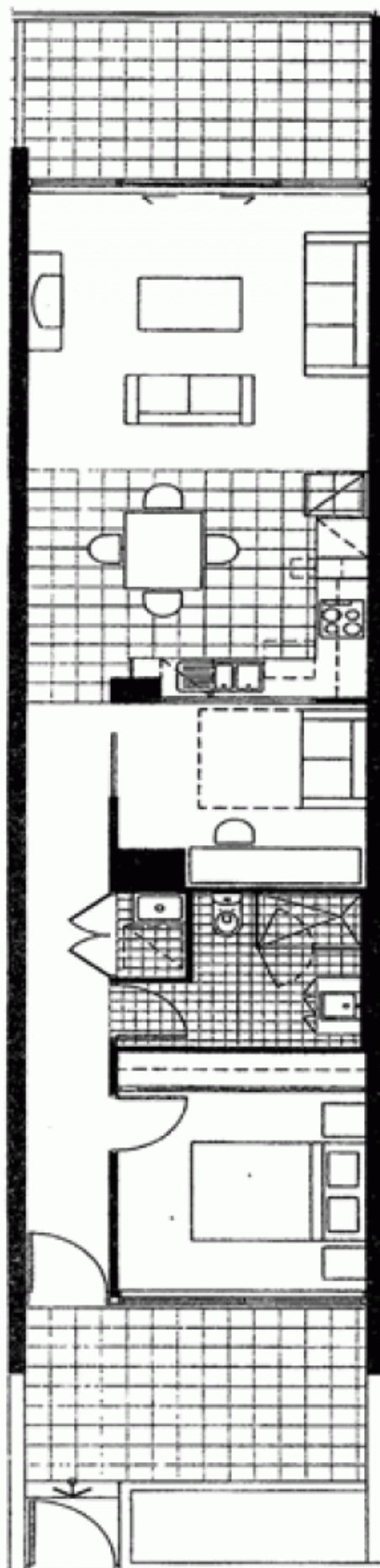
Scott Robertson
(02) 9818 8888



CAR SPACE



STORAGE
CAGE



Every precaution has been taken to establish the accuracy of the included information, but does not constitute any representation by the vendor or agent. Prospective purchasers should make their own enquiries to verify the information contained in this document. Refer to contract of sale for actual inclusions.