



## 206/1 Warayama Place 'BALMAIN SHORES' ROZELLE NSW

3 2 2

Occupying a commanding hilltop position taking in spectacular panoramic harbour & park views this stunning 3 bedroom apartment located in the highly desirable "Balmain Shores" waterfront development offers easy low maintenance living & is located just a short walk from Darling Street's cosmopolitan strip & is less than 10 minutes by bus from the Sydney CBD.

### Property Features;

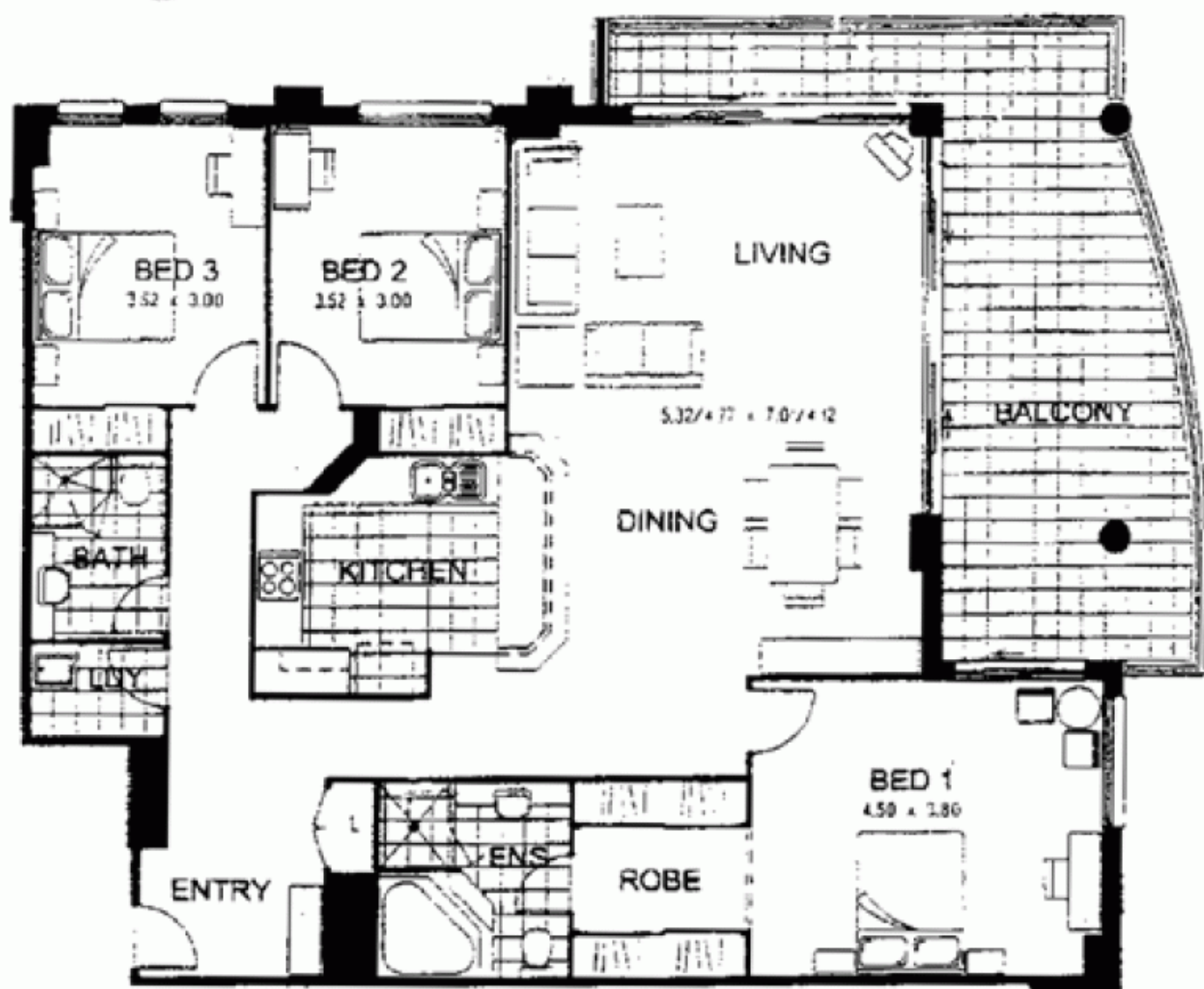
- \* Large 26m2 North-East facing entertainer's balcony
- \* Polished timber floors throughout
- \* Large open plan living bathed in natural sunlight all day
- \* Gourmet kitchen featuring granite benchtops, stainless steel appliances & gas cooking
- \* Ducted reverse cycle air-conditioning throughout

**Price** : SOLD FOR \$1,040,000

**View** : <https://www.balmainrealty.com/1P0798>



**Scott Robertson**  
(02) 9818 8888



Every precaution has been taken to establish the accuracy of the included information, but does not constitute any representation by the vendor or agent. Prospective purchasers should make their own enquiries to verify the information contained in this document. Refer to contract of sale for actual inclusions.