



315/9 Warayama Place 'BALMAIN SHORES' ROZELLE NSW

2 2 1

Overlooking lush tropical gardens and featuring water views this fabulous apartment situated in the popular "Balmain Shores" waterfront development offers resort style living at its best.

Property features;

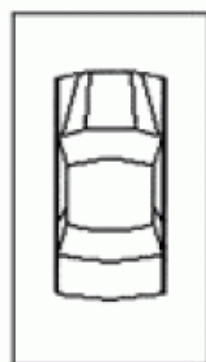
- * Generous light filled open plan living that leads onto a sun-drenched north-east facing balcony
- * Secluded outlook overlooking gardens & "Bridgewater Park"
- * Water views
- * Gourmet kitchen featuring large pantry space, granite benchtops with quality appliances featuring gas cooking, rangehood exhaust & dishwasher
- * Large master bedroom features mirrored built-in

Price : SOLD FOR \$630,000

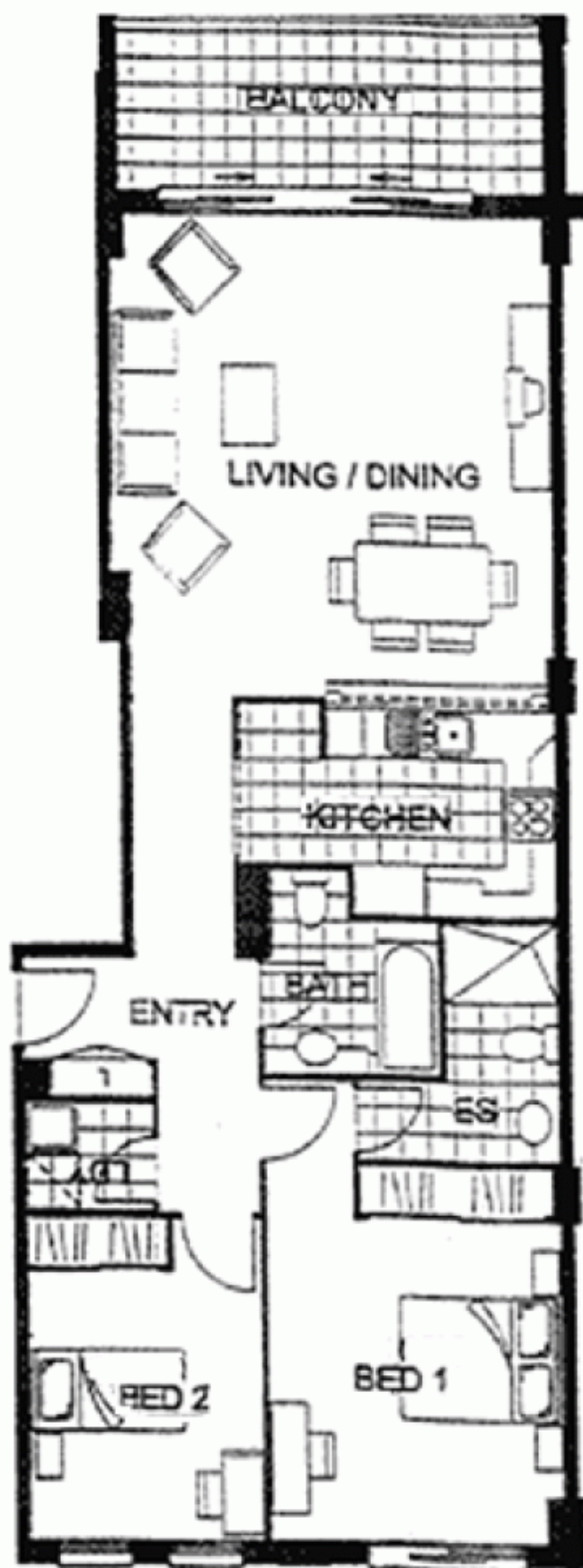
View : <https://www.balmainrealty.com/1P0815>



Scott Robertson
(02) 9818 8888



**Security
Car space**



Every precaution has been taken to establish the accuracy of the included information but does not constitute any representation by the vendor or agent. All interested parties should make their own enquiries to verify the information contained in this document. Refer to contract of sale for actual inclusions.