



8/3 Wulumay Close 'Balmain Cove' ROZELLE NSW

3 🏠 2 🚗 2 🚗

Taking in spectacular panoramic harbour views and overlooking manicured gardens this sun filled north facing waterfront apartment located in "Balmain Cove" is a must to inspect.

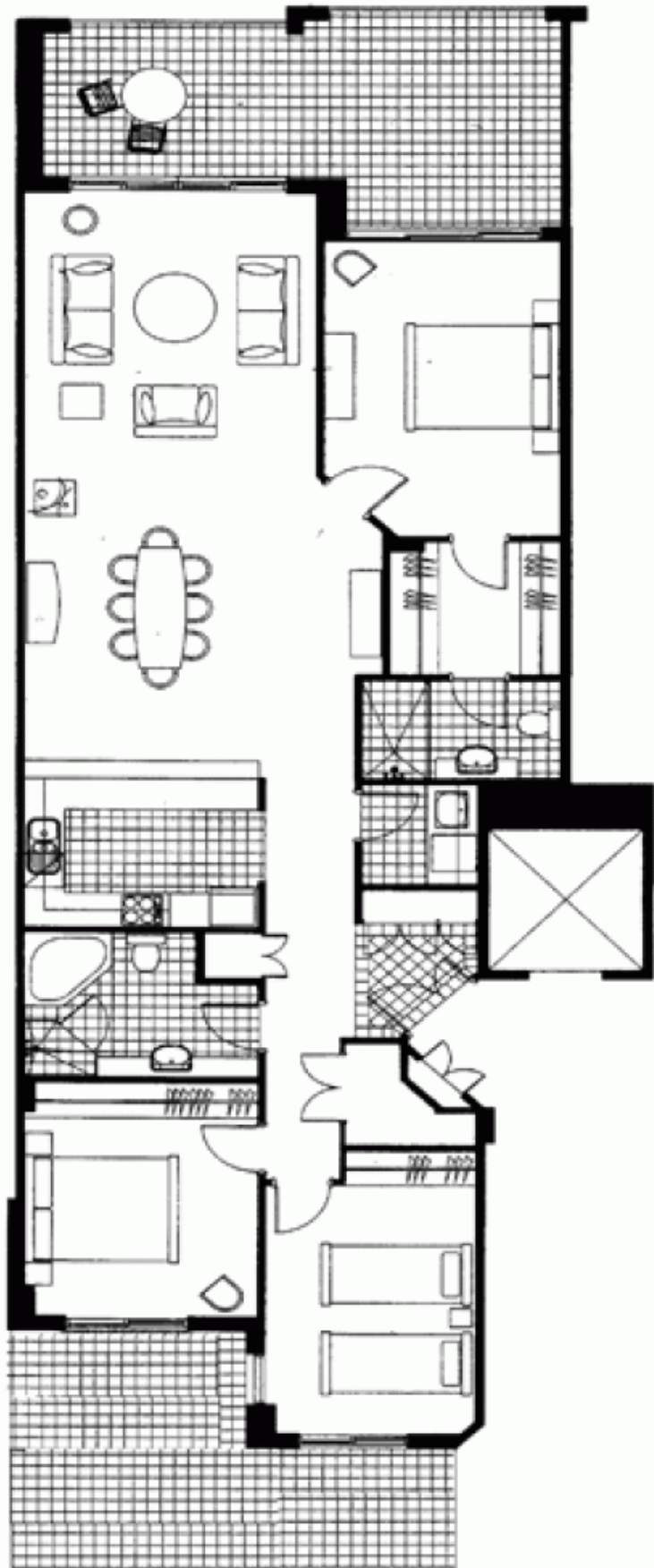
Price : SOLD FOR \$1,385,000
Building Size : 28 sqm
View : <https://www.balmainrealty.com/1P0820>

Property features;

- * Direct access onto the waterfront & marina facility through your own private gate
- * Panoramic harbour views
- * Sun drenched north facing living
- * Spacious covered entertaining terrace with access onto waterfront
- * King size master bedroom features water views, access onto north facing terrace with ensuite bathroom & walk in wardrobes
- * Large rear courtyard accessible off second & third



Bronte Brown
(02) 9818 8888



Every precaution has been taken to establish the accuracy of the included information but does not constitute any representation by the vendor or agent. All interested parties should make their own enquiries to verify the information contained in this document. Refer to contract of sale for actual inclusions.