



339/7 Crescent Avenue WATERLOO NSW

1 1 1

Well appointed ground floor apartment located within the Lumina building of the popular Meriton Development. Large enclosed terrace off lounge & master bedroom, this truly is one of the best units in it's block.

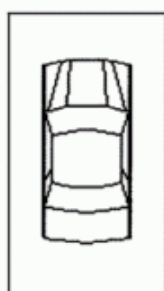
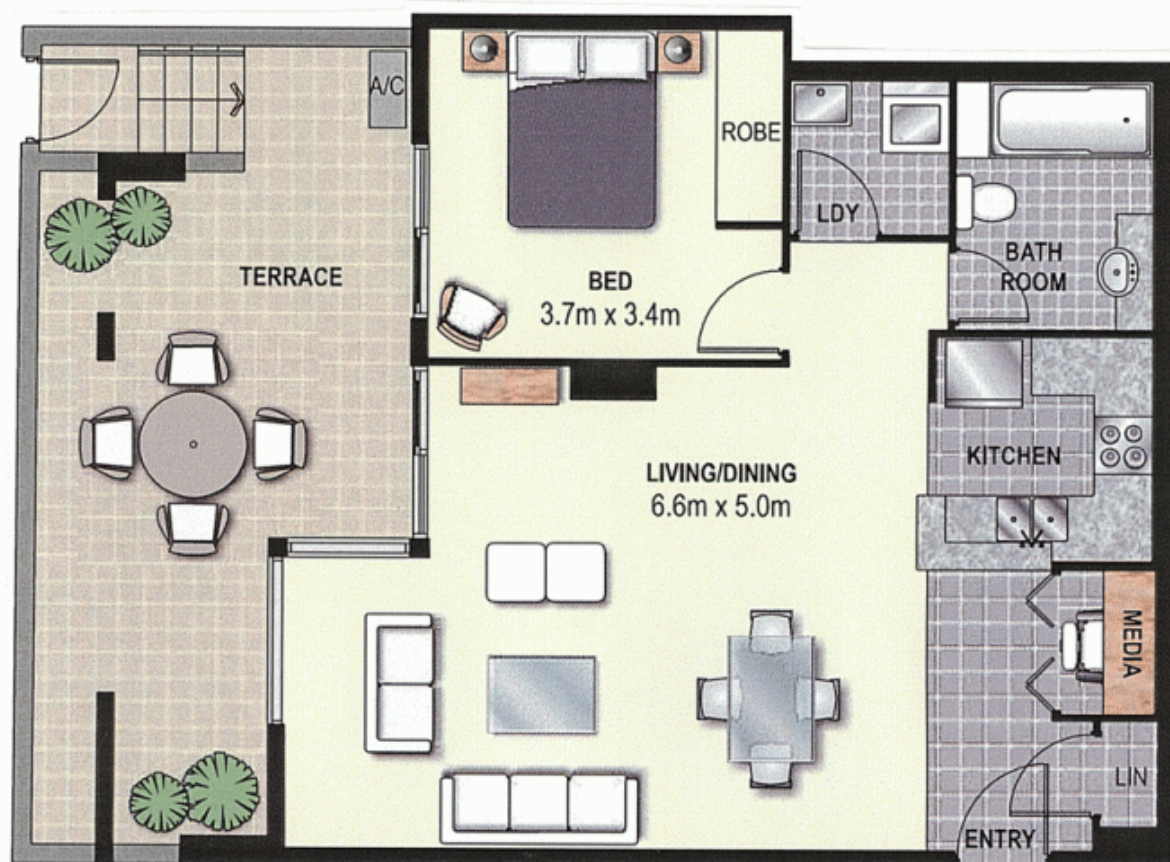
Price : SOLD FOR \$487,000
Building Size : 10 sqm
View : <https://www.balmainrealty.com/1P0845>

Property Features:

- * Master bedroom with built in robe
- * Media alcove off lounge room suitable for your computer & home office needs
- * Stylish granite kitchen, with stainless steel SMEG appliances (including dishwasher) gas cooking
- * Open plan living area leading out onto fully tiled terrace
- * Split system air conditioning in bedroom and lounge
- * Generous modern fully tiled bathroom
- * Internal laundry with dryer
- * Video security intercom
- * Under ground security car space & own storage cage



Bronte Brown
(02) 9818 8888



**Security
Car space**



Every precaution has been taken to establish the accuracy of the included information, but does not constitute any representation by the vendor or agent. Prospective purchasers should make their own enquiries to verify the information contained in this document. Refer to contract of sale for actual inclusions.