



10 Chatham Place 'Abbotsford Cove' ABBOTSFORD NSW

4 2 2

Set within the exclusive "Abbotsford Cove" waterfront development, this prized dual level torrens title townhome offers a lifestyle of privacy and convenience ideal for the busy executive couple or the growing family.

Boasting light filled interiors throughout complimented by front and rear landscaped courtyards perfect for alfresco entertaining, this quality residence presents with true house like proportions.

Property features include:

Dual street frontage via Great North Road and Chatham Place

Generous separate living and dining spaces

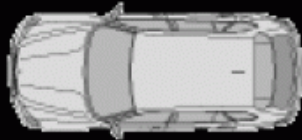
Sun drenched North West aspect

Price : SOLD FOR \$1,160,000

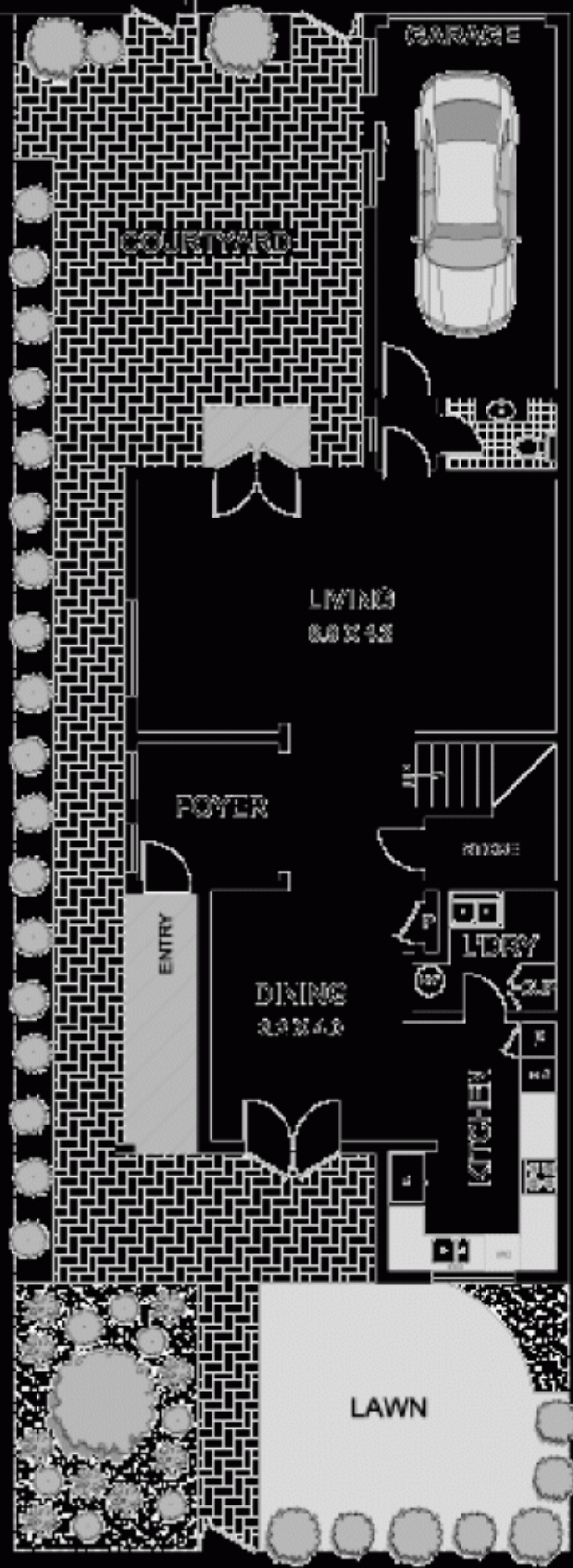
View : <https://www.balmainrealty.com/1P0850>



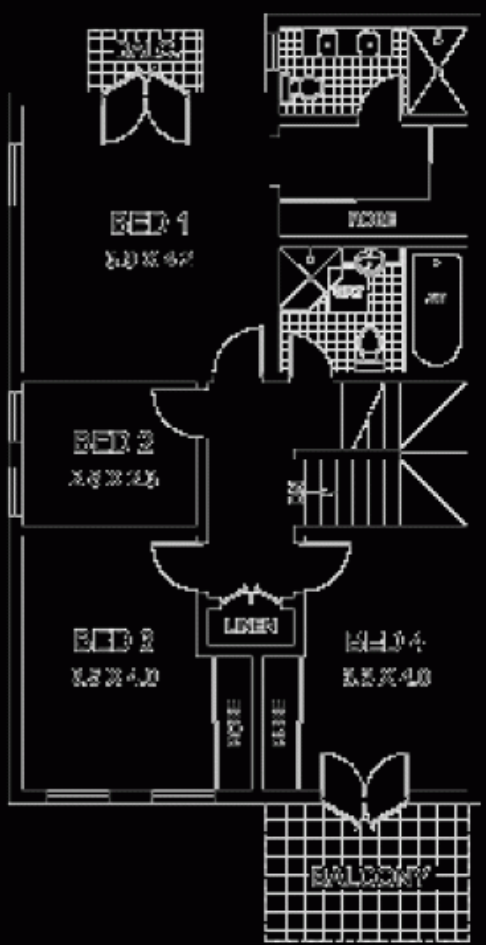
Scott Robertson
(02) 9818 8888



DRIVE



LEVEL 1



LEVEL 2



This plan is for information purposes only and does not constitute an offer of any financial product. It does not constitute an offer of any financial product. It does not constitute an offer of any financial product.

REYNOLDS & REYNOLDS
 2010 370 377

10 CHATHAM PLACE
 ABBOTSFORD