



308/43 Terry Street 'Atelier' ROZELLE NSW

1  1  1 

This superbly appointed one bedroom apartment featuring additional study alcove is found within the highly sought after "Atelier" complex.

Located just a minutes easy walk to Darling Street's restaurants, cafes & pubs with express public transport just metres from your doorstep taking you into the Sydney CBD in less than 10 minutes this is the perfect address

Property features include;

- Large study alcove/ home office. Ideal short term guest accommodation
- Well appointed kitchen featuring pull out pantry, stainless steel kitchen appliances including gas cooktop, oven, rangehood & dishwasher
- Spacious open plan living with a sun drenched northerly


Price : SOLD FOR \$555,000
Land Size : 95 sqm
View : <https://www.balmainrealty.com/1P0861>



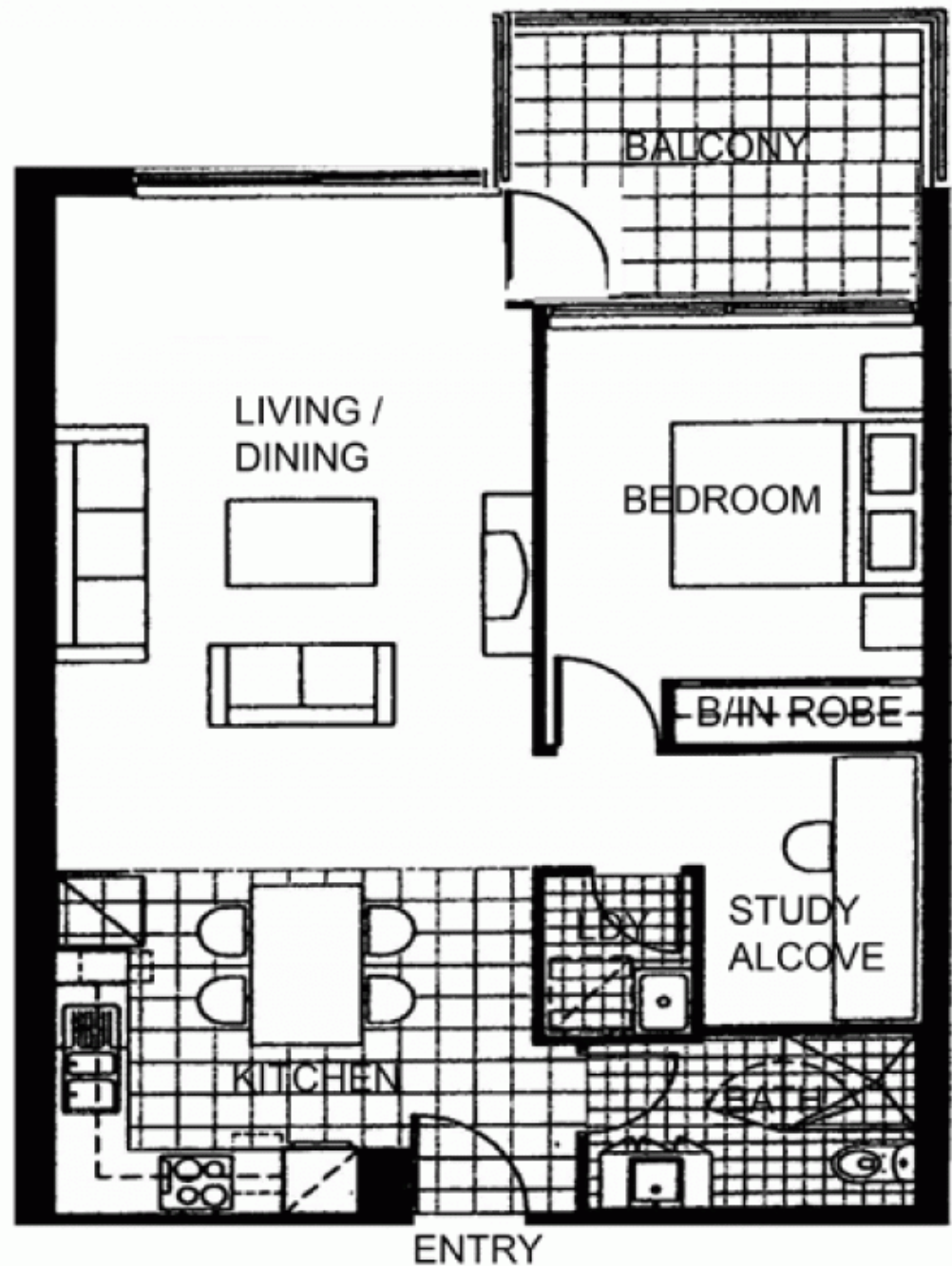
Scott Robertson
(02) 9818 8888



SECURE
CAR SPACE



LOCK UP
STORAGE CAGE
3.9m x 2.5m



Every precaution has been taken to establish the accuracy of the included information, but does not constitute any representation by the vendor or agent. Prospective purchasers should make their own enquiries to verify the information contained in this document. Refer to contract of sale for actual inclusions.