



208/43 Terry Street 'Atelier' ROZELLE NSW

1 🛏 1 🚿 1 🚗

This stunning air-conditioned contemporary apartment boasts spacious open plan living that flows seamlessly onto a sun filled balcony with northerly aspect & features an additional study area with additional built in wardrobe that is suitable for the professional who works from home or ideal guest accommodation.

Ideally located on the Balmain Peninsula just 4kms from the Sydney CBD this "Atelier" apartment is just moments from the waterfront, parkland, express city transport & Darling Street's vibrant cafes & restaurants.

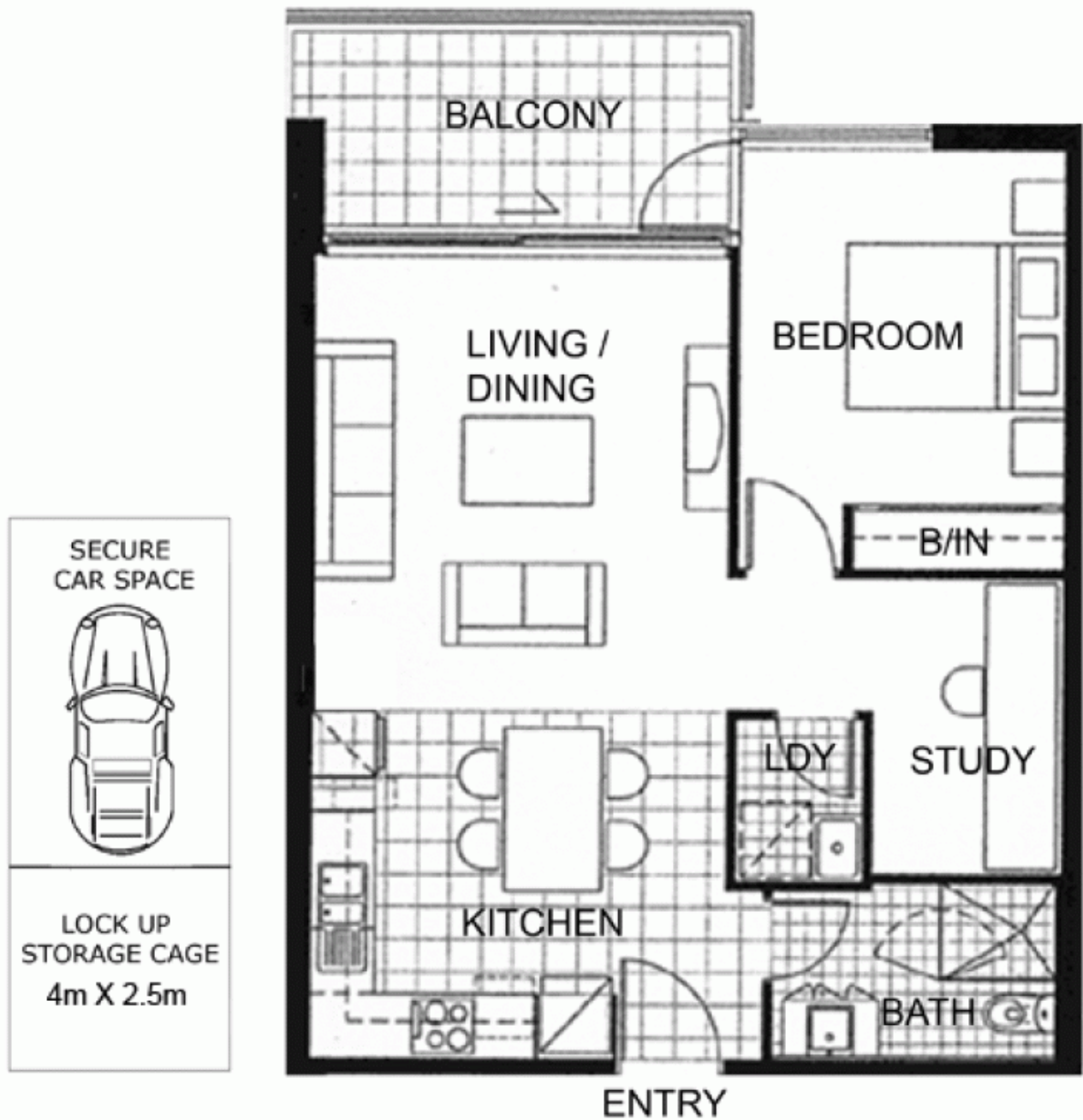
Property features include;

- Functional kitchen featuring pull out pantry, stainless steel appliances including gas cooktop, oven, rangehood & dishwasher

Price : SOLD FOR \$550,000
Building Size : 10 sqm
View : <https://www.balmainrealty.com/1P0864>



Scott Robertson
(02) 9818 8888



Every precaution has been taken to establish the accuracy of the included information, but does not constitute any representation by the vendor or agent. Prospective purchasers should make their own enquiries to verify the information contained in this document. Refer to contract of sale for actual inclusions.