



49/3 Wulumay Close 'Balmain Cove' ROZELLE NSW

3 2 2

Set within the prized 'Balmain Cove' waterfront complex this sensational apartment occupies a massive 343sqm on title and offers a peaceful and tranquil setting yet is still within strolling distance from Rozelle Village's trendy cafes, restaurants and express transport links.

Offering open plan living of enormous proportions that flow seamlessly onto expansive outdoor entertaining spaces with an ideal northerly aspect that take in water views this home offers the best in lifestyle & location.

Property features include;

- Entertaining terraces to the front & side with northerly aspect and rear tropical garden courtyard accessible off all bedrooms
- Light filled interiors with quality appointments throughout

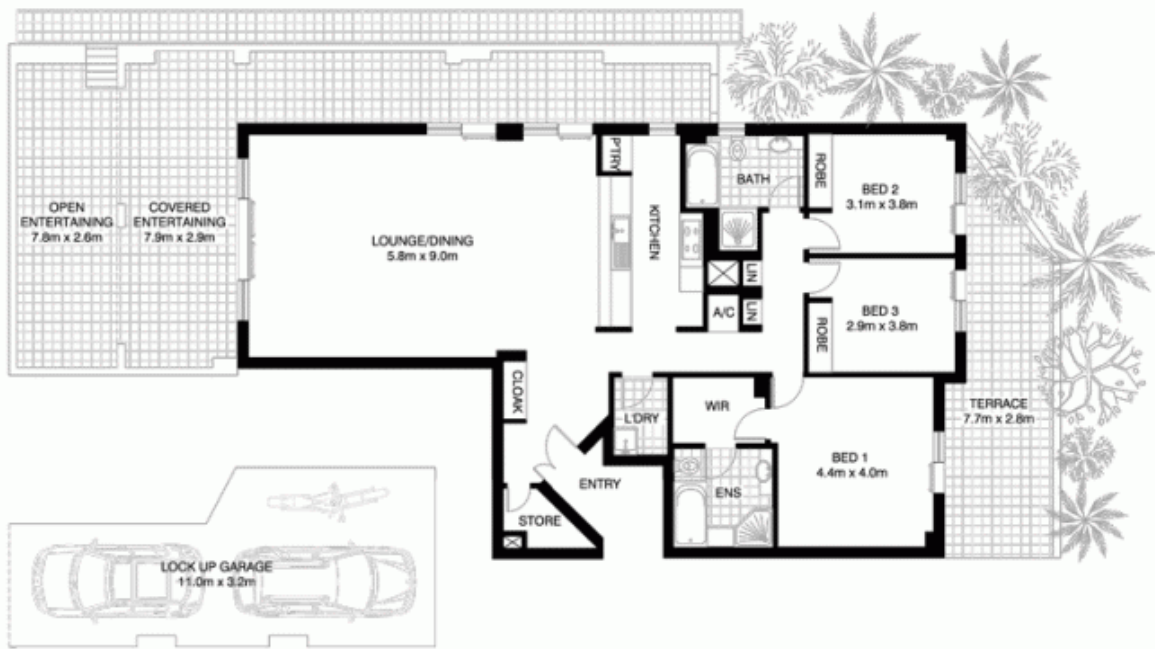
Price : SOLD FOR \$1,275,000
Building Size : 37 sqm
View : <https://www.balmainreality.com/1P0866>



Scott Robertson
(02) 9818 8888

9818 8000

REALTY International
"World Wide Web of Buyers & Sellers"



VMARK DESIGN PTY LTD
18/73 PACIFIC HIGHWAY
WATARA NSW 2077
OFFICE : 9498 9033
EMAIL : edw@vmarkdesign.com.au
ABN : 12 109 067 950

ROZELLE
49/3 WULUMAY CLOSE
*INTERNAL FLOOR AREA APPROX 152m²

Disclaimer: Plans shown are for presentation purposes and are not part of any legal document or title and are subject to errors, omissions, and inaccuracies and should not be used as sole reference. All measurements and figures are approximate. Interested parties should make their own enquiries.