



102/6 Yara Avenue 'Balmain Shores' ROZELLE NSW

2  2  1 

Set within the prized "Balmain Shores" waterfront complex this fabulous two bedroom apartment features sun-drenched open plan living with timber floor boards that flows onto a private garden courtyard oasis with an ideal north-east aspect.

Price : SOLD FOR \$665,000

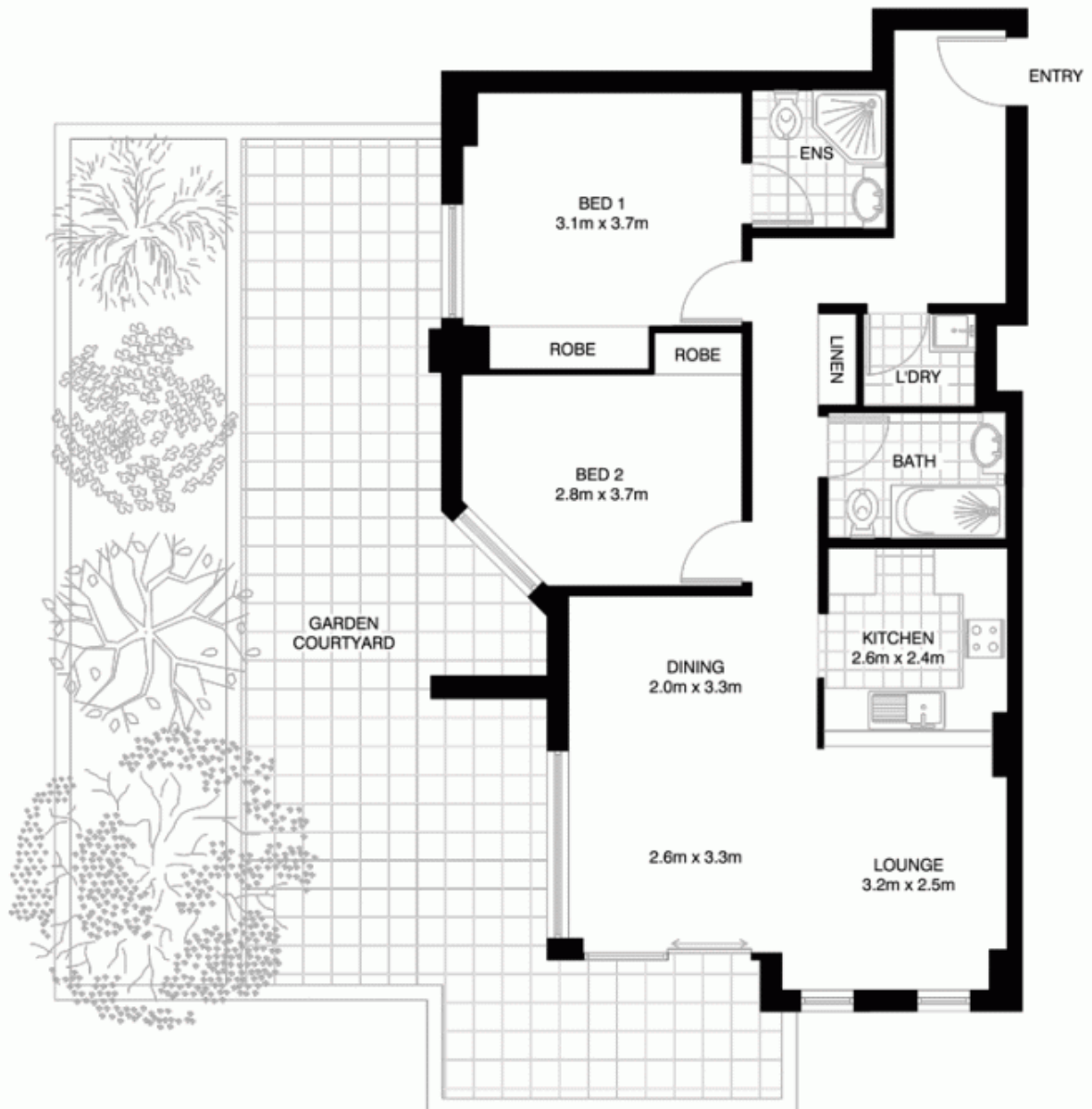
View : <https://www.balmainrealty.com/1P0872>

Property features include;

- Extensive outdoor entertaining terrace & covered balcony
- Spacious open plan living flooded in natural light
- Timber floor boards throughout living, carpet in bedrooms
- Gourmet kitchen featuring granite benchtops, large pantry, stainless steel kitchen appliances including dishwasher, gas cooking & rangehood exhaust
- Spacious master bedroom featuring en-suite bathroom and built-in wardrobes
- Second bedroom also features built-in wardrobes



Scott Robertson
(02) 9818 8888



VMARK DESIGN PTY LTD
18/75 PACIFIC HIGHWAY
WAITARA NSW 2077
OFFICE : 9489 9523
EMAIL : dave@vmarkdesign.com.au
ABN : 12 109 067 950

ROZELLE 102/6 YARA AVENUE

*NOTE: ALL DIMENSIONS SHOWN ARE APPROXIMATE AND SHOULD ONLY BE USED AS A GUIDE. NOT TO SCALE.