



302/43 Terry Street 'Atelier' ROZELLE NSW

1 1 1

Featuring cathedral ceilings that accentuate space & natural light this exceptional one bedroom apartment positioned on the top floor of the boutique "Atelier" building is located just a short stroll from Darling Street's cafe's, restaurants, boutique shopping & public transport.

Price : SOLD FOR \$520,000
Building Size : 9 sqm
View : <https://www.balmainrealty.com/1P0876>

Property features include;

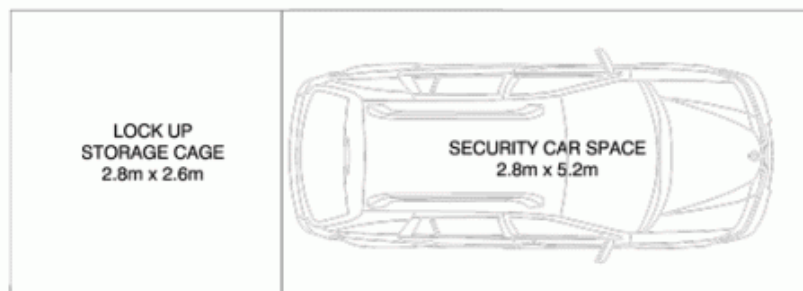
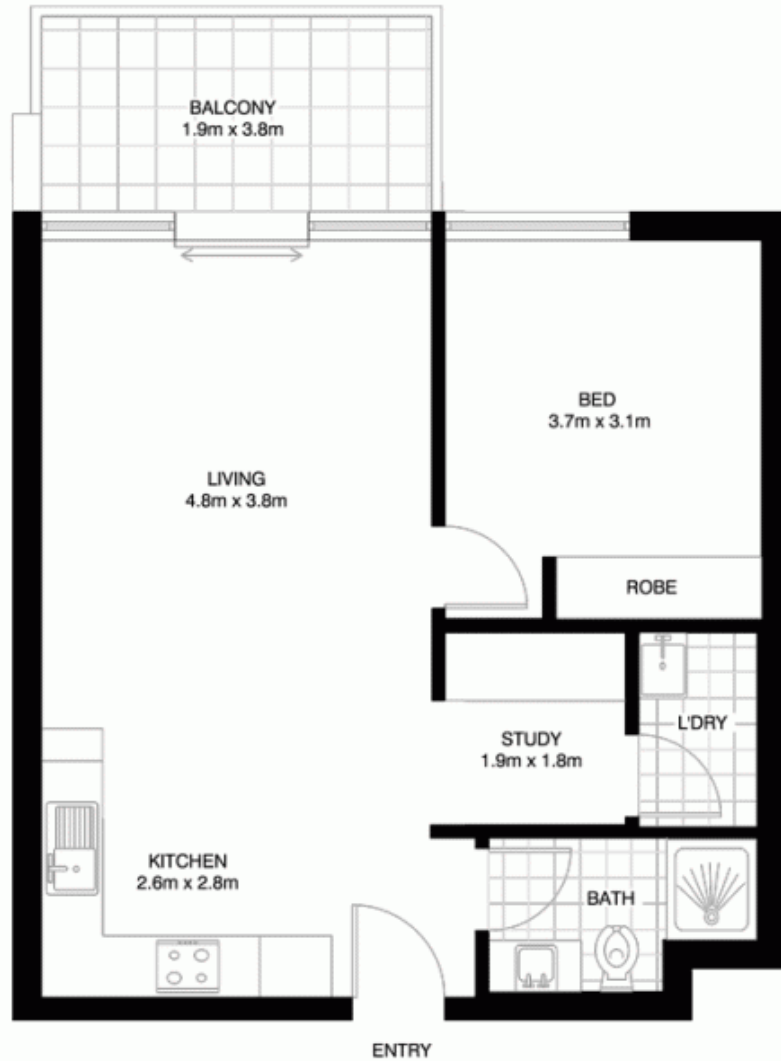
- Additional home office/ study area with custom made desk & shelving
- Stylishly appointed kitchen featuring granite benchtops, pull-out pantry, gas cooktop, rangehood exhaust, fan forced oven & dishwasher
- Spacious open plan living that flows onto a fully covered balcony featuring switch back louvre shutters
- Double sized bedroom with cathedral ceilings and built-in wardrobes



Scott Robertson
(02) 9818 8888

9818 8000

REALTY International
"World Wide Web of Buyers & Sellers"



(NOT ACTUAL LOCATION)



VMARK DESIGN PTY LTD
18/75 PACIFIC HIGHWAY
WAITARA NSW 2077
OFFICE : 9489 9523
EMAIL : dave@vmarkdesign.com.au
ABN : 12 109 067 950

'Atelier' ROZELLE
302/43 TERRY STREET

*NOTE: ALL DIMENSIONS SHOWN ARE APPROXIMATE AND SHOULD ONLY BE USED AS A GUIDE. NOT TO SCALE.