



## 207/43 Terry Street 'Atelier' ROZELLE NSW

1 🏠 1 🚗

This oversized air-conditioned studio apartment offers spacious open plan living that flows seamlessly onto a sun filled balcony with northerly aspect in a whisper quiet location.

Located in the contemporary "Atelier" complex just 6 years old this apartment is centrally located on the Balmain Peninsula just 4kms from the Sydney CBD, is just moments from the waterfront, parkland, express city transport & Darling Street's vibrant cafes & restaurants.

Property features include;

- Functional kitchen featuring pull out pantry, stainless steel appliances including gas cooktop, fan forced oven, rangehood & dishwasher
- Sun drenched balcony ideal for year round alfresco dining

**Price** : SOLD FOR \$465,000  
**Building Size** : 8 sqm  
**View** : <https://www.balmainrealty.com/1P0877>



**Scott Robertson**  
**(02) 9818 8888**

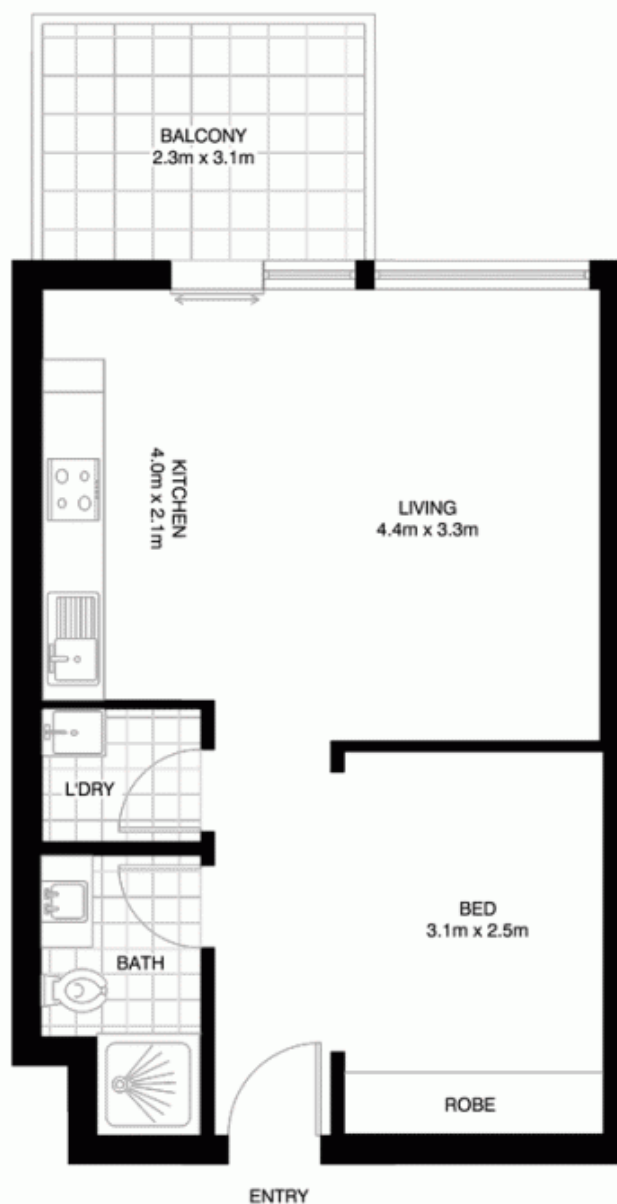
9818 8000

REALTY International

"World Wide Web of Buyers & Sellers"



(NOT ACTUAL LOCATION)



V-MARK DESIGN PTY LTD  
18/75 PACIFIC HIGHWAY  
WAITARA NSW 2077  
OFFICE : 9489 9523  
EMAIL : dave@vmarkdesign.com.au  
ABN : 12 109 067 950

**'Atelier' ROZELLE**  
**207/43 TERRY STREET**

\*NOTE: ALL DIMENSIONS SHOWN ARE APPROXIMATE AND SHOULD ONLY BE USED AS A GUIDE. NOT TO SCALE.