




## 103/5 Wulumay Close ROZELLE NSW

3  2  2 

Positioned on the waterfront of "Balmain Cove" The Esplanades this stunning sun drenched north facing three bedroom apartment offers house like proportions with extensive outdoor entertaining areas over two garden courtyards.

Featuring direct access onto the waterfront & lush manicured gardens and approximately 200 metres level stroll to the exclusive Balmain Cove marina facility for the boating enthusiast with the option to purchase a 12 metre marina berth this property & location is sure to tick all of your boxes.

Property features include;

- Family sized kitchen with granite benchtops, stainless steel appliances including gas cooktop, oven, microwave &

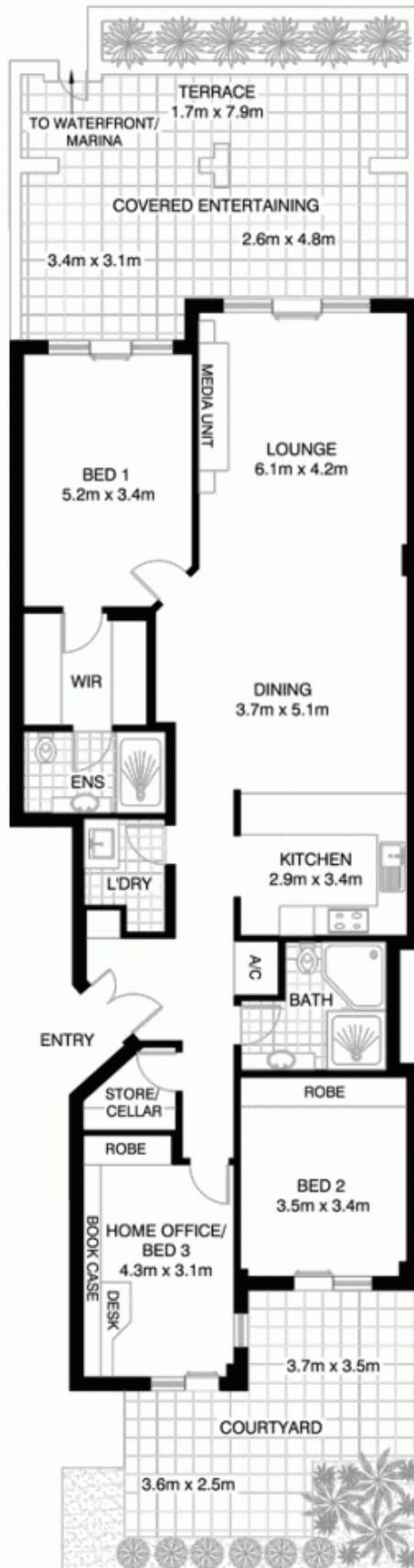
**Price** : SOLD FOR \$1,430,000  
**Building Size** : 28 sqm  
**View** : <https://www.balmainrealty.com/1P0878>



**Scott Robertson**  
**(02) 9818 8888**



# 'Balmain Cove' ROZELLE



**103/5 WULUMAY CLOSE**

\*NOTE: ALL DIMENSIONS SHOWN ARE APPROXIMATE AND SHOULD ONLY BE USED AS A GUIDE. NOT TO SCALE.