



## 133/5 Wulumay Close ROZELLE NSW

3 2 2

Sitting an estimated 100 metre stroll to the waters edge incorporating the 'Balmain Cove' marina facility and taking in dazzling harbour views to the north this sensational ground floor, single level apartment is a must inspect.

Value the proximity to cafes, restaurants, select shopping, express city transport and the popular "Bay Run" featuring over 8kms of walking & cycling paths along the foreshore from your doorstep.

Optional Package: 12 metre marina berth for sale \$220,000

Property features include;

- Interiors & entertaining areas of colossal proportions with quality appointments throughout
- Blackbutt hardwood timber flooring

**Price** : SOLD FOR \$1,400,000

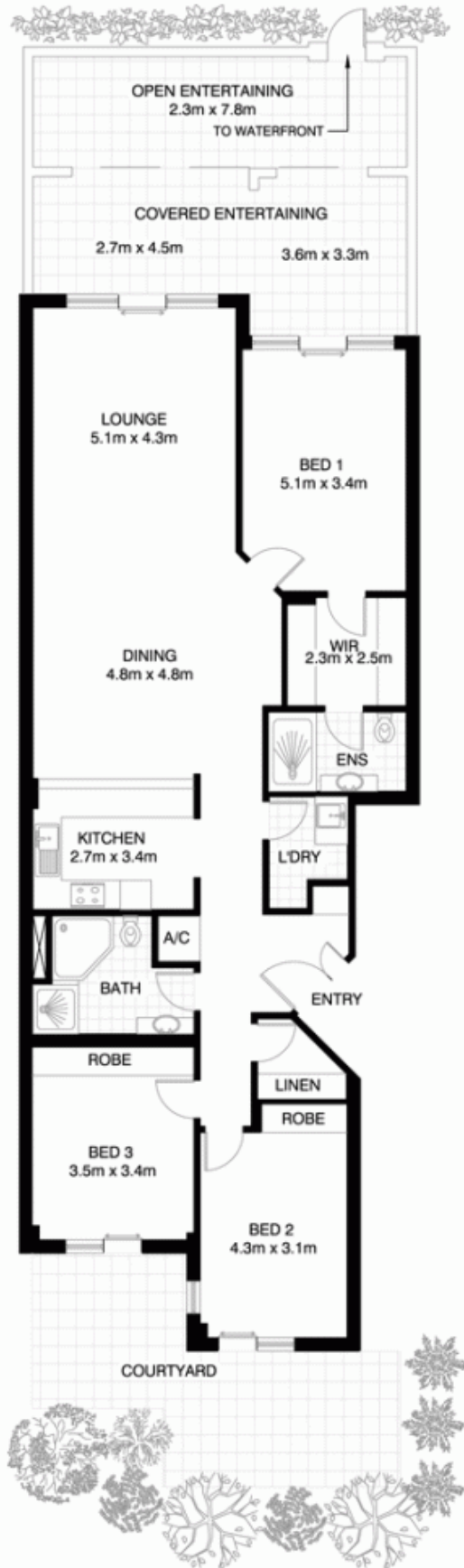
**View** : <https://www.balmainrealty.com/1P0881>



**Scott Robertson**  
(02) 9818 8888



(NOT ACTUAL LOCATION)



**ROZELLE**  
133/5 WULUMAY CLOSE  
'Balmain Cove'

\*NOTE: ALL DIMENSIONS SHOWN ARE APPROXIMATE AND SHOULD ONLY BE USED AS A GUIDE. NOT TO SCALE.