



## 144/5 Wulumay Close ROZELLE NSW

3  2  2 

Offering sensational harbour views from an elevated & enviable position overlooking Iron Cove Bay towards Birkenhead Point taking in Snapper & Spectacle Islands this magnificent three bedroom apartment is the ultimate in harbourside living.

Featuring a unique layout with an additional media room/ 4th bedroom and living spaces of exceptional proportions this lovely family sized apartment enjoys a sun drenched northerly aspect with windows on 3 sides.

Property features include;

- Enormous covered entertaining balcony with northerly aspect. Second balcony to the side off dining & media room
- Family sized kitchen featuring granite benchtops, stainless appliances with gas cooktop, rangehood,

**Price** : SOLD FOR \$1,450,000  
**Building Size** : 24 sqm  
**View** : <https://www.balmainrealty.com/1P0884>



**Scott Robertson**  
**(02) 9818 8888**

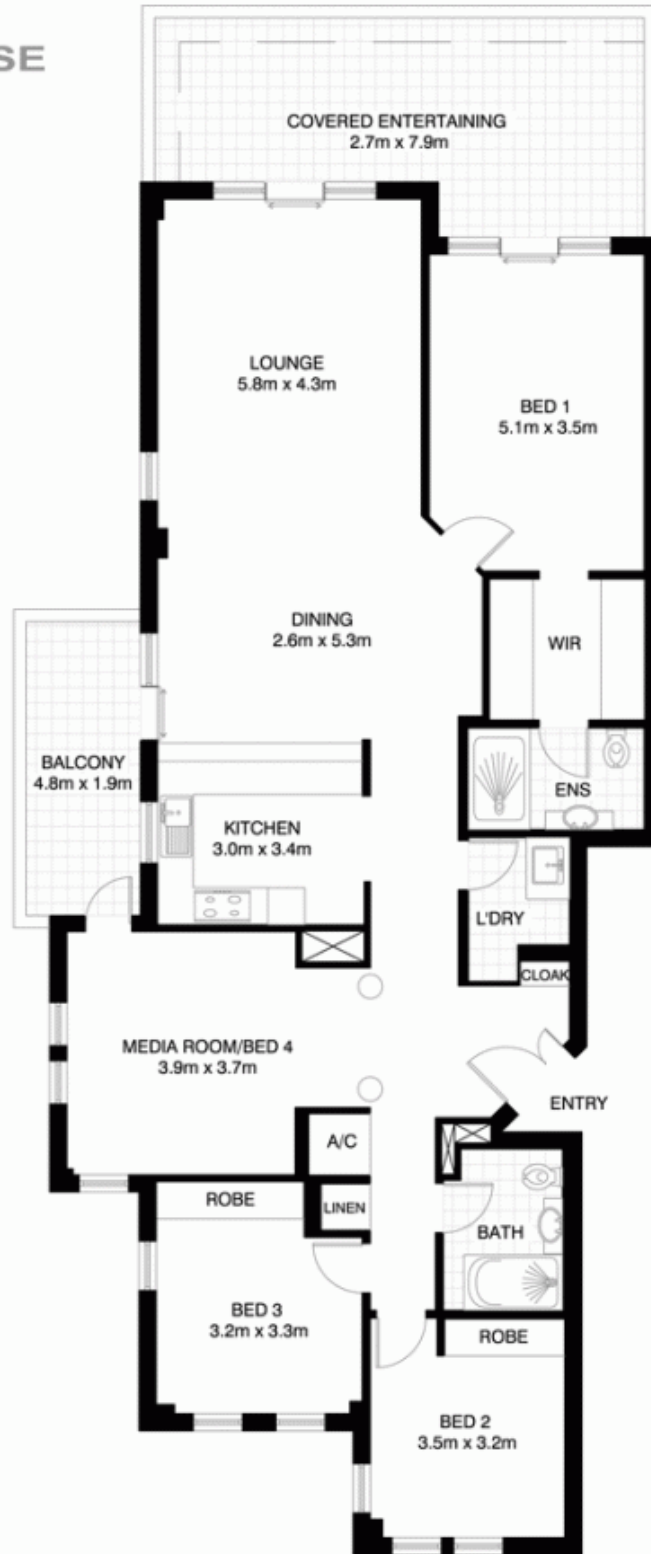
9818 8000

REALTY International  
"World Wide Web of Buyers & Sellers"



# ROZELLE

## 144/5 WULUMAY CLOSE 'Balmain Cove'



\*NOTE: ALL DIMENSIONS SHOWN ARE APPROXIMATE AND SHOULD ONLY BE USED AS A GUIDE. NOT TO SCALE.