



2/65-69 Nelson Street ROZELLE NSW

1 1 1

Situated in the recently constructed 'Nelson Court' boutique development of only 10 apartments this stunning oversized one bedroom apartment set over 108sqm features high quality appointments throughout & offers a sizeable north facing garden courtyard for year round entertaining.

This location is without a doubt one of the picks on the entire Peninsula. A quiet tree lined street only metres level stroll from Darling Street's cafes, restaurants, pubs, boutique retailers, IGA supermarket, banks, post office, florists, news agencies, hairdressers, beauticians, medical centres & public transport taking you into the Sydney CBD in approximately 10 minutes.

Property features include;

- Generous open plan living spaces that flow seamlessly

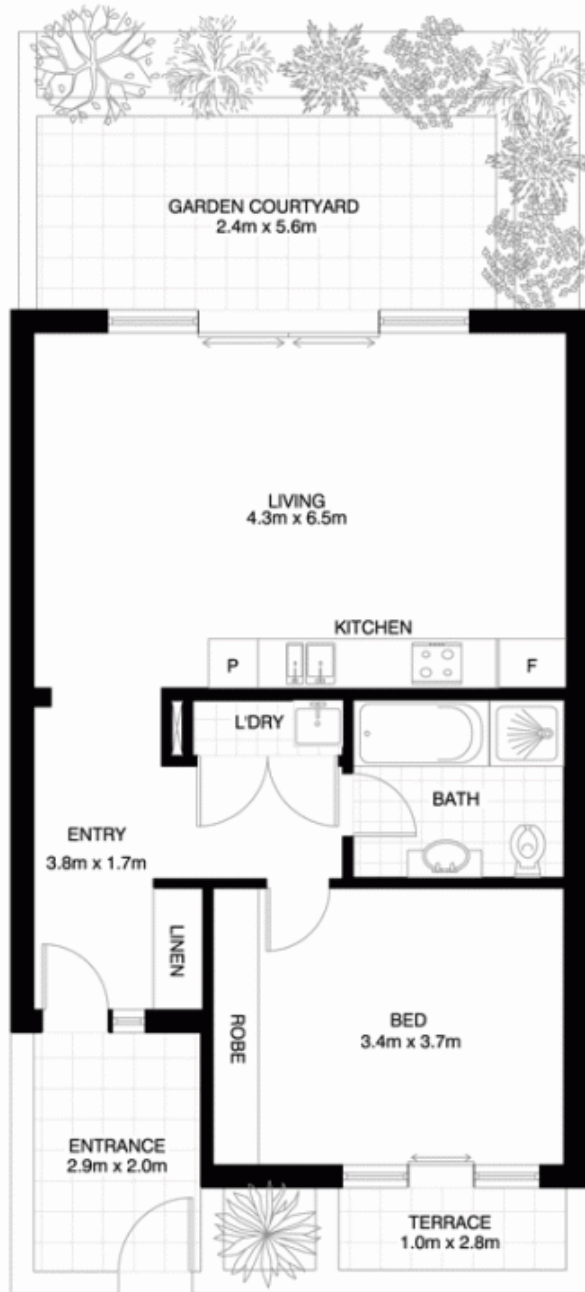
Price : SOLD FOR \$630,000
Building Size : 12 sqm
View : <https://www.balmainrealty.com/1P0899>



Scott Robertson
(02) 9818 8888

9818 8000

REALTY International
"World Wide Web of Buyers & Sellers"



GROUND LEVEL



BASEMENT LEVEL

ROZELLE
2/65-69 NELSON STREET
"Nelson Court"

*NOTE: ALL DIMENSIONS SHOWN ARE APPROXIMATE AND SHOULD ONLY BE USED AS A GUIDE. NOT TO SCALE.