



303/8 Yara Avenue ROZELLE NSW

1  1  1 

Set within the popular 'Balmain Shores' waterfront complex with access to resort like swimming pools & gymnasium this will presented one bedroom apartment is positioned in a quiet location with a lovely leafy & secluded outlook & enjoys a sun-drenched north-easterly balcony.

Located just a short stroll from the waterfront, park reserve with playground & BBQ facilities, the 'Bay Run' featuring over 8kms of walking & cycling paths along the harbour foreshore & just minutes from Darling Street's cafes, restaurants, pubs, boutique shopping and public transport this location is sure to tick all of your boxes.

Property features include;

- Spacious open plan living that leads onto a sunny balcony
- Functional kitchen featuring granite benchtops, pantry,

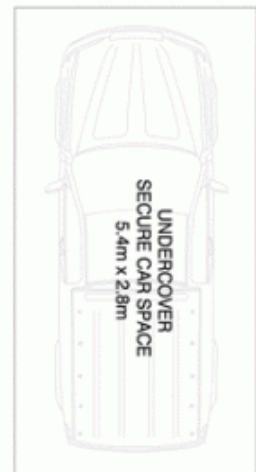
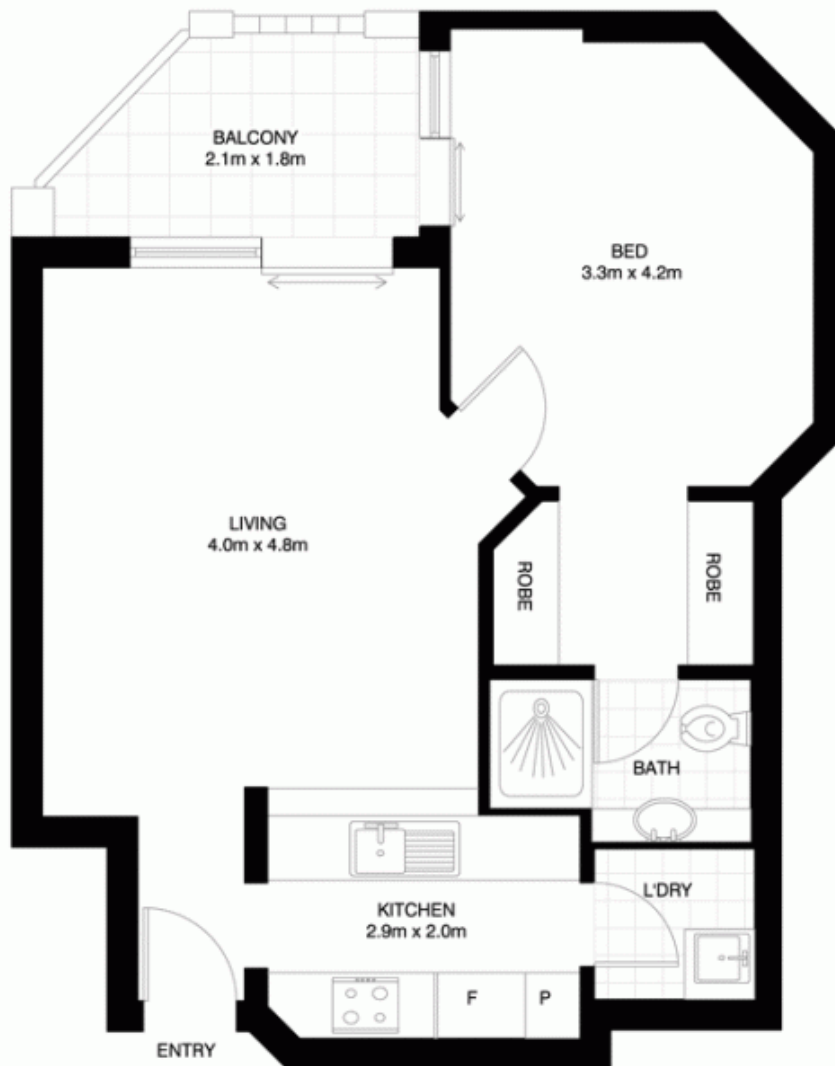
Price : SOLD FOR \$475,000
Building Size : 8 sqm
View : <https://www.balmainrealty.com/1P0900>



Bronte Brown
(02) 9818 8888

9818 8000

REALTY International
"World Wide Web of Buyers & Sellers"



(NOT ACTUAL LOCATION)
NOT TO SCALE

ROZELLE
303/8 YARA AVENUE
"Pinnacle" - Balmain Shores

*NOTE: ALL DIMENSIONS SHOWN ARE APPROXIMATE AND SHOULD ONLY BE USED AS A GUIDE. NOT TO SCALE.