



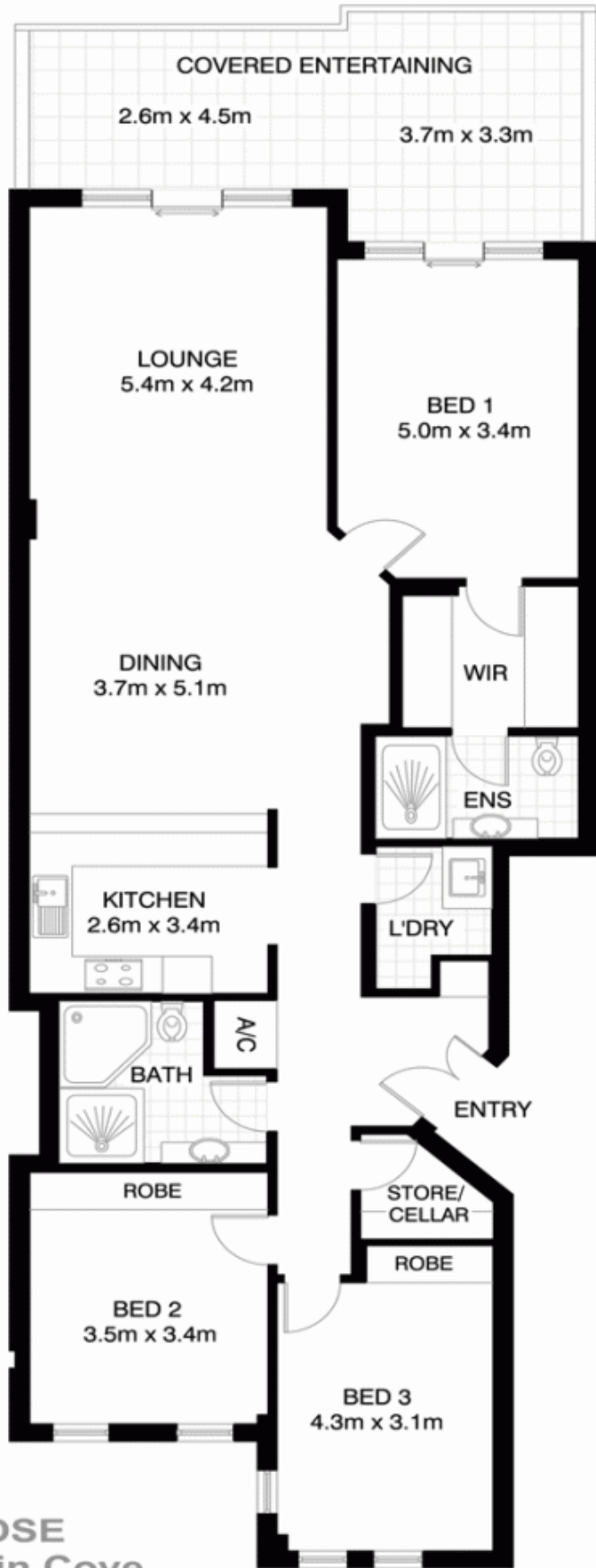
12/3 Wulumay Close ROZELLE NSW

3  2  2 

Price : SOLD FOR \$1,600,000
Building Size : 22 sqm
View : <https://www.balmainrealty.com/1P0906>



Bronte Brown
(02) 9818 8888



ROZELLE
12/3 WULUMAY CLOSE
"The Landings" - Balmain Cove

*NOTE: ALL DIMENSIONS SHOWN ARE APPROXIMATE AND SHOULD ONLY BE USED AS A GUIDE. NOT TO SCALE.