



310/3 Warayama Place ROZELLE NSW

2 2 1

Featuring a highly sought after floor plan with both bedrooms separated by the living this sensational two bedroom apartment offers larger than average open plan living spaces which extend out onto a large covered balcony taking in a lush tropical garden outlook.

Located in the 'Balmain Shores' waterfront complex just a short stroll from parkland with BBQ facilities, The Bay Run featuring approximately 8kms of walking/cycling paths along the harbour foreshore and Darling Street's cafes, restaurants, shops & express public transport this location has it all.

Residents also enjoy resort style facilities including use of a heated indoor lap pool, outdoor plunge pool, spa, saunas & a fully equipped gymnasium.

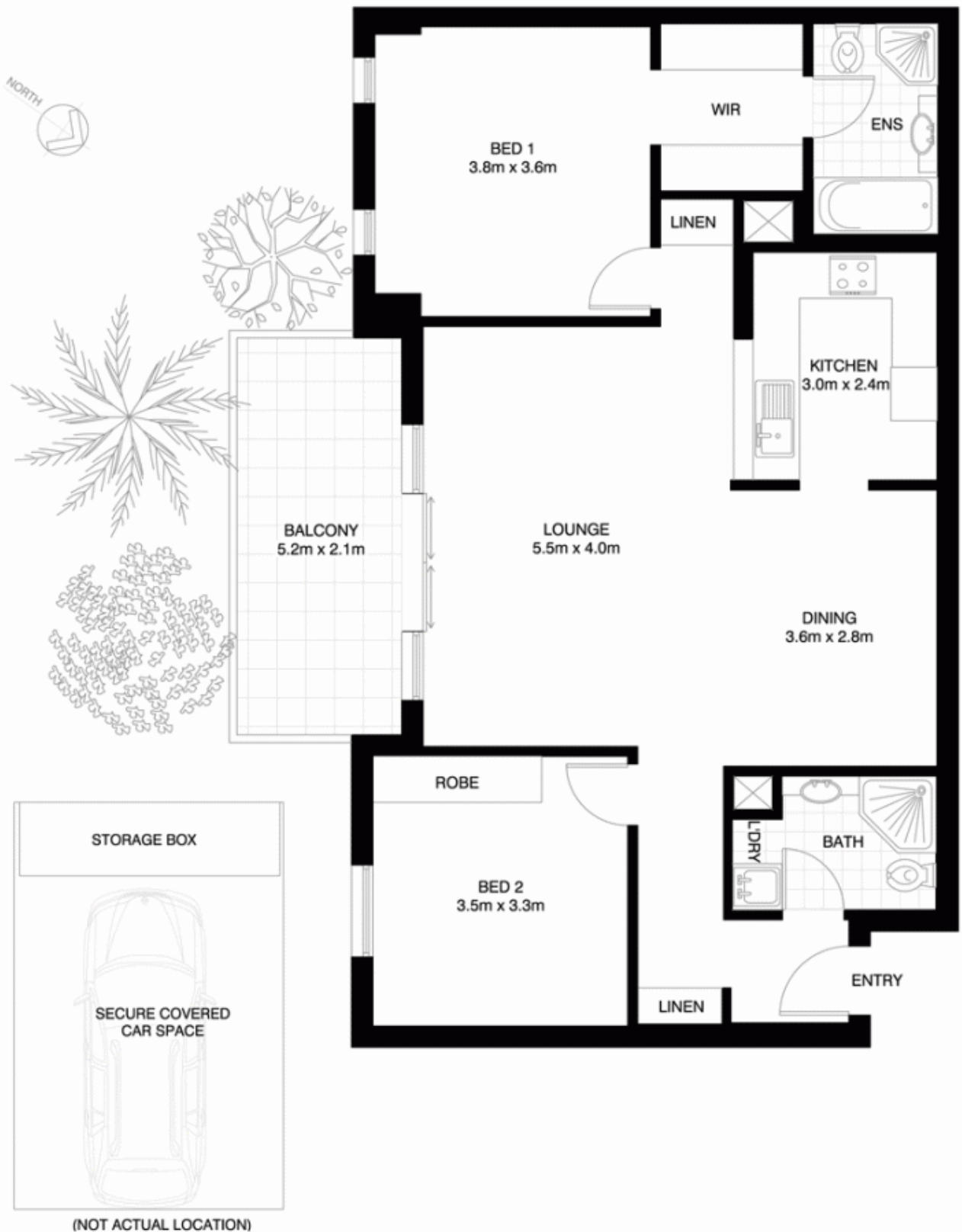
Price : SOLD FOR \$700,000
Building Size : 12 sqm
View : <https://www.balmainrealty.com/1P0907>



Scott Robertson
(02) 9818 8888

9818 8000

REALTY International
"World Wide Web of Buyers & Sellers"



ROZELLE
310/3 WARAYAMA PLACE
"Mariners View" - Balmain Shores

*NOTE: ALL DIMENSIONS SHOWN ARE APPROXIMATE AND SHOULD ONLY BE USED AS A GUIDE. NOT TO SCALE.