



32/3 Wulumay Close ROZELLE NSW

2 🛏 2 🚿 2 🚗

Positioned within the sought after Balmain Cove waterfront development this oversized and elevated two bedroom apartment boasts a larger than life living area and a study/media room to make your own. Sit back on your private oversized balcony and enjoy sparkling views directly over Iron Cove Bay. With its huge internal and outdoor spaces this is an entertainers delight.

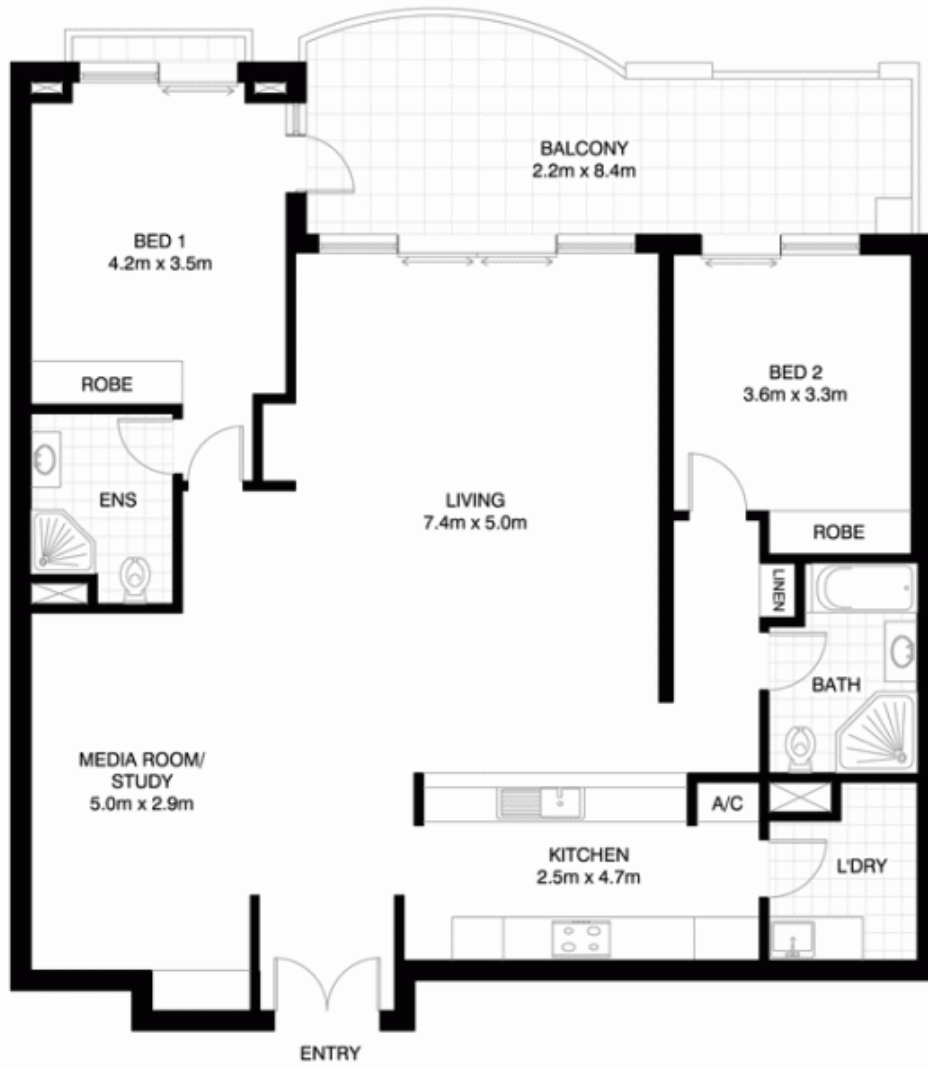
Price : SOLD FOR \$1,310,000
Building Size : 19 sqm
View : <https://www.balmainrealty.com/1P0911>

Property features include:

- Superb views over Cockatoo Island, Snapper Island & Birkenhead Point
- Large lounge/dining plus additional study area/media room.
- Gourmet kitchen with solid granite benchtops, large pantry, stainless appliances including gas cooktop, oven, rangehood, dishwasher and microwave



Bronte Brown
(02) 9818 8888



(NOT ACTUAL LOCATION)

ROZELLE
32/3 WULUMAY CLOSE
"The Landings" - Balmain Cove

*NOTE: ALL DIMENSIONS SHOWN ARE APPROXIMATE AND SHOULD ONLY BE USED AS A GUIDE. NOT TO SCALE.