



## 304/26 Warayama Place ROZELLE NSW

1  1  1 

Situated in the 'Balmain Shores' waterfront complex this large one bedroom apartment features spacious open plan living spaces, sun filled interiors and a lovely north-east facing balcony.

Located just a short stroll from Balmain & Rozelle villages offering an array of cafes, restaurants, pubs and just metres from the waters edge with the 'Bay Run' featuring over 8kms of walking & cycling paths along the harbour foreshore and an abundance of parkland with access to Resort like swimming pools & gymnasium enjoying the outdoors & getting active is all part of the lifestyle on offer.

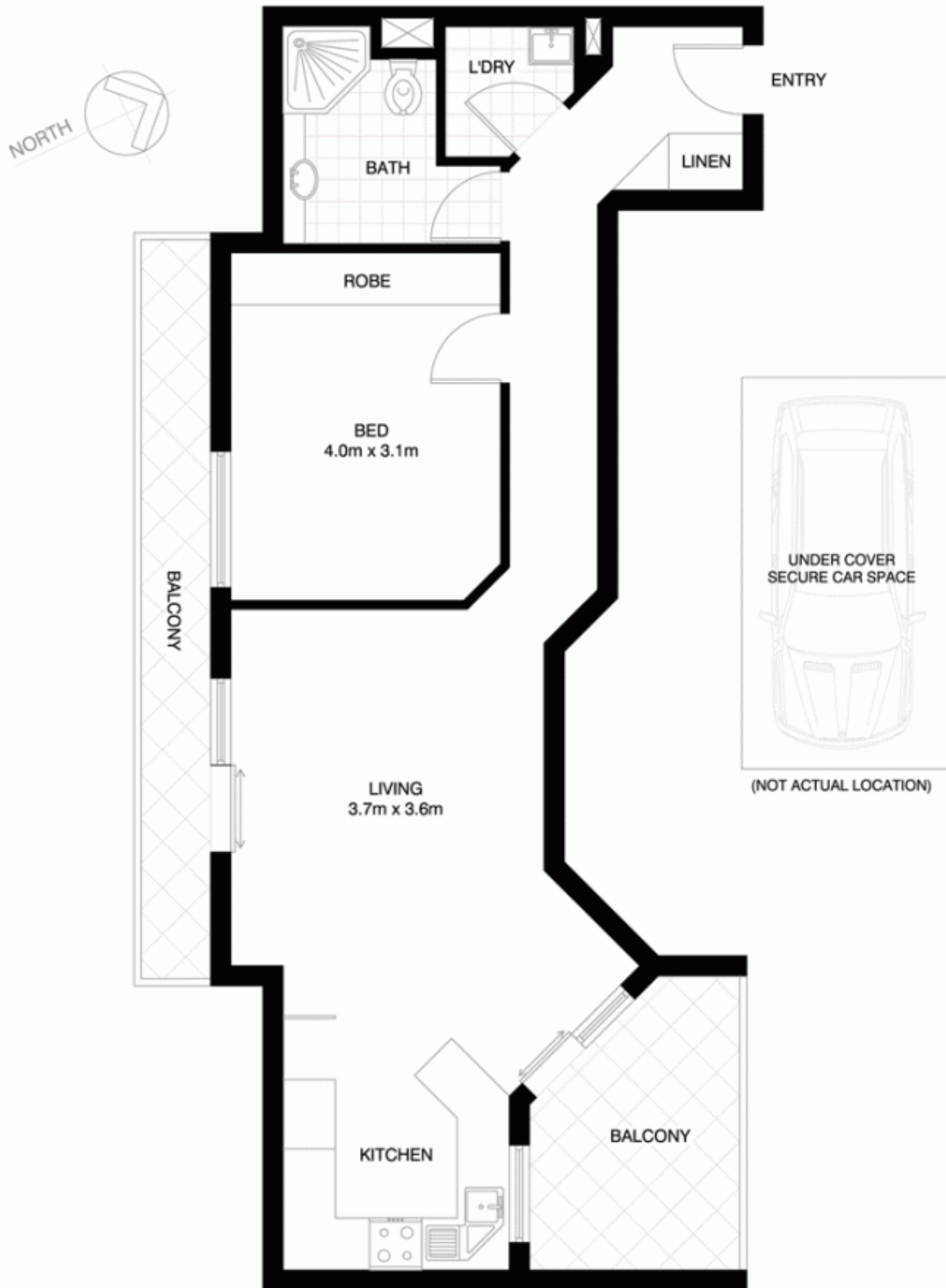
Property features include;

- Spacious open plan living with access onto two balconies
- Positioned on level 3 of 5 levels

**Price** : SOLD FOR \$502,000  
**Building Size** : 9 sqm  
**View** : <https://www.balmainrealty.com/1P0917>



**Scott Robertson**  
(02) 9818 8888



**ROZELLE**  
**304/26 WARAYAMA PLACE**  
**"Crestview" - Balmain Shores**

\*NOTE: ALL DIMENSIONS SHOWN ARE APPROXIMATE AND SHOULD ONLY BE USED AS A GUIDE. NOT TO SCALE.