



201/30 Warayama Place ROZELLE NSW

2 2 1

Offering a very generous 113sqm of living space this oversized two bedroom apartment found within the 'Balmain Shores' waterfront complex features a highly desirable floor plan with both bedrooms separated by the living spaces & all rooms offer access onto a large 20sqm covered balcony.

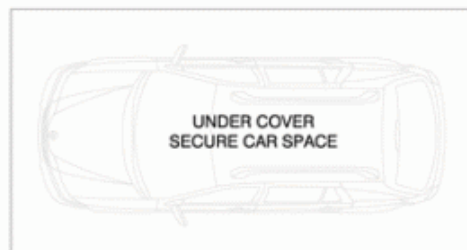
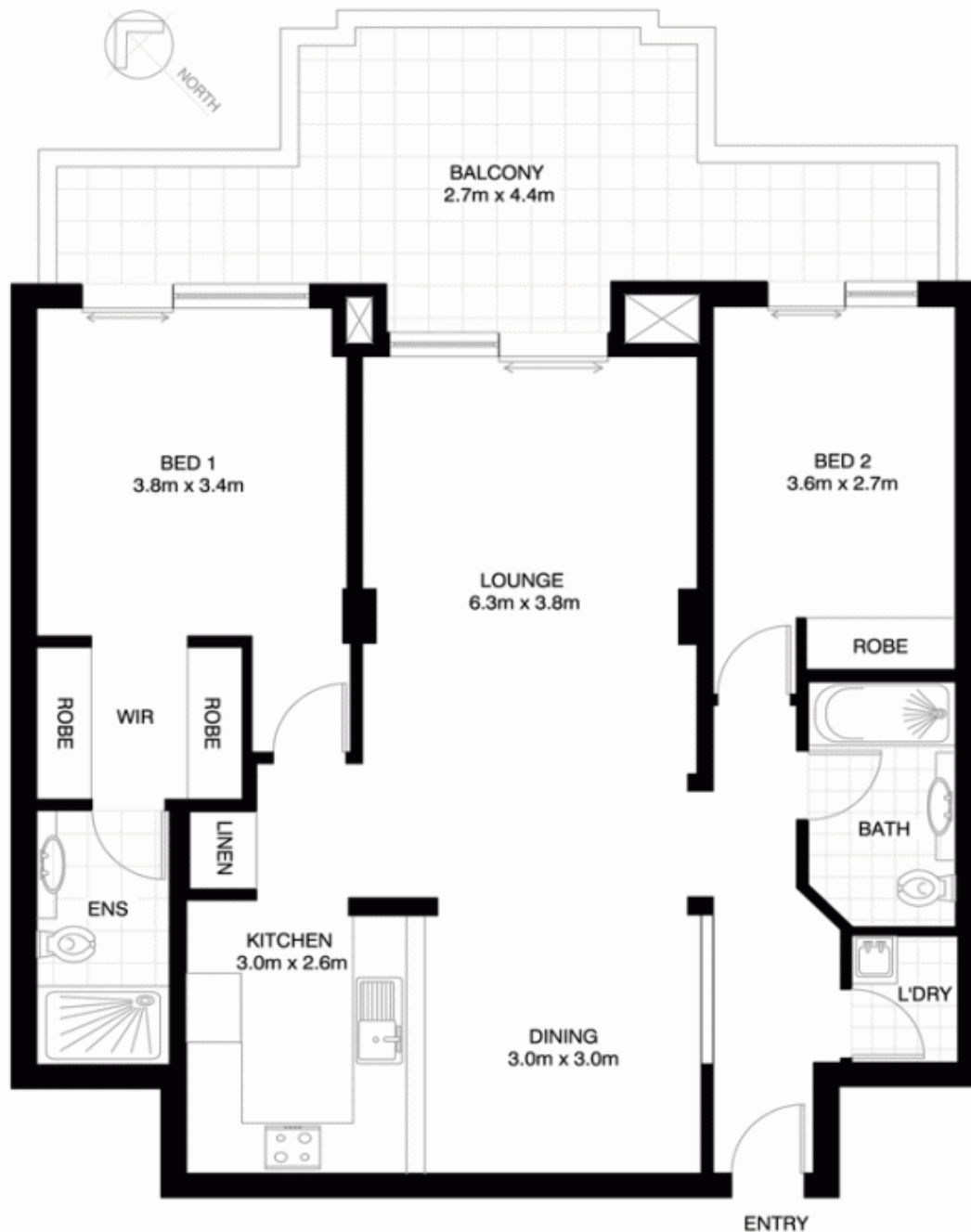
Located just a short stroll from Balmain & Rozelle villages offering an array of cafes, restaurants, pubs and just metres from the waters edge with the 'Bay Run' featuring over 8kms of walking & cycling paths along the harbour foreshore and an abundance of parkland with access to Resort like swimming pools & gymnasium this location has everything on offer.

Property features include;

Price : SOLD FOR \$688,000
Building Size : 14 sqm
View : <https://www.balmainrealty.com/1P0918>



Scott Robertson
 (02) 9818 8888



(NOT ACTUAL LOCATION)

ROZELLE
201/30 WARAYAMA PLACE
"Anchorage" - Balmain Shores

*NOTE: ALL DIMENSIONS SHOWN ARE APPROXIMATE AND SHOULD ONLY BE USED AS A GUIDE. NOT TO SCALE.