




## 407/5 Warayama Place ROZELLE NSW

3  2  2 

Featuring an elevated vantage point over Bridgewater Park & Iron Cove Bay with sweeping harbour views toward Birkenhead Point, Snapper, Spectacle and Cockatoo Islands this stunning apartment situated in the Balmain Shores waterfront complex offers resort style living at its finest and is just moments from an abundance of cafes & restaurants with transport just a moments stroll from your doorstep.

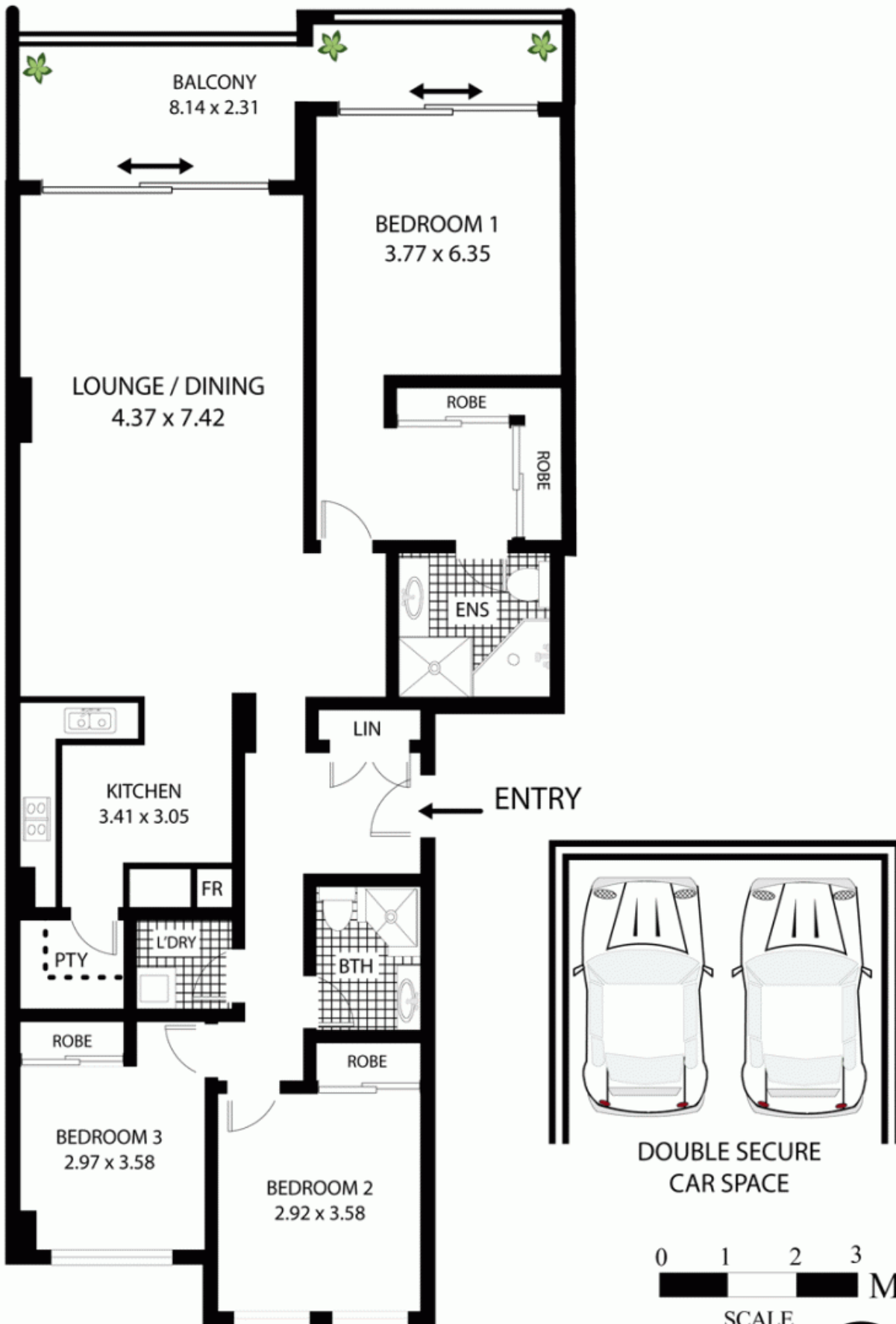
Property features include;

- Large covered balcony for year round entertaining
- Prime waterfront location with exceptional water and parkland views
- Spacious open plan living with sun-filled interiors & windows at either end to take advantage of the harbour breeze

**Price** : SOLD  
**Building Size** : 18 sqm  
**View** : <https://www.balmainrealty.com/1P0921>



**Bronte Brown**  
**(02) 9818 8888**



# 407/5 Warayama Place Rozelle

All measurements are approximate only. Plan is provided as an indication of layout

