



107/26 Warayama Place ROZELLE NSW

1

Nestled in a peaceful & secure setting, this oversized studio apartment set within the 'Balmain Shores' waterfront complex boasts waterviews, space & a desirable lifestyle just moments stroll from the waterfront & 'Bay Run', Balmain & Rozelle villages with express public transport from your doorstep.

Currently leased at \$445 per week to an excellent tenant this property presents an ideal investment opportunity or perfect first home alike.

Property features include;

- Reverse cycle air-conditioning
- BRAND NEW carpet throughout
- Water views and leafy outlook from balcony & living
- Spacious living spaces with a lovely sun drenched

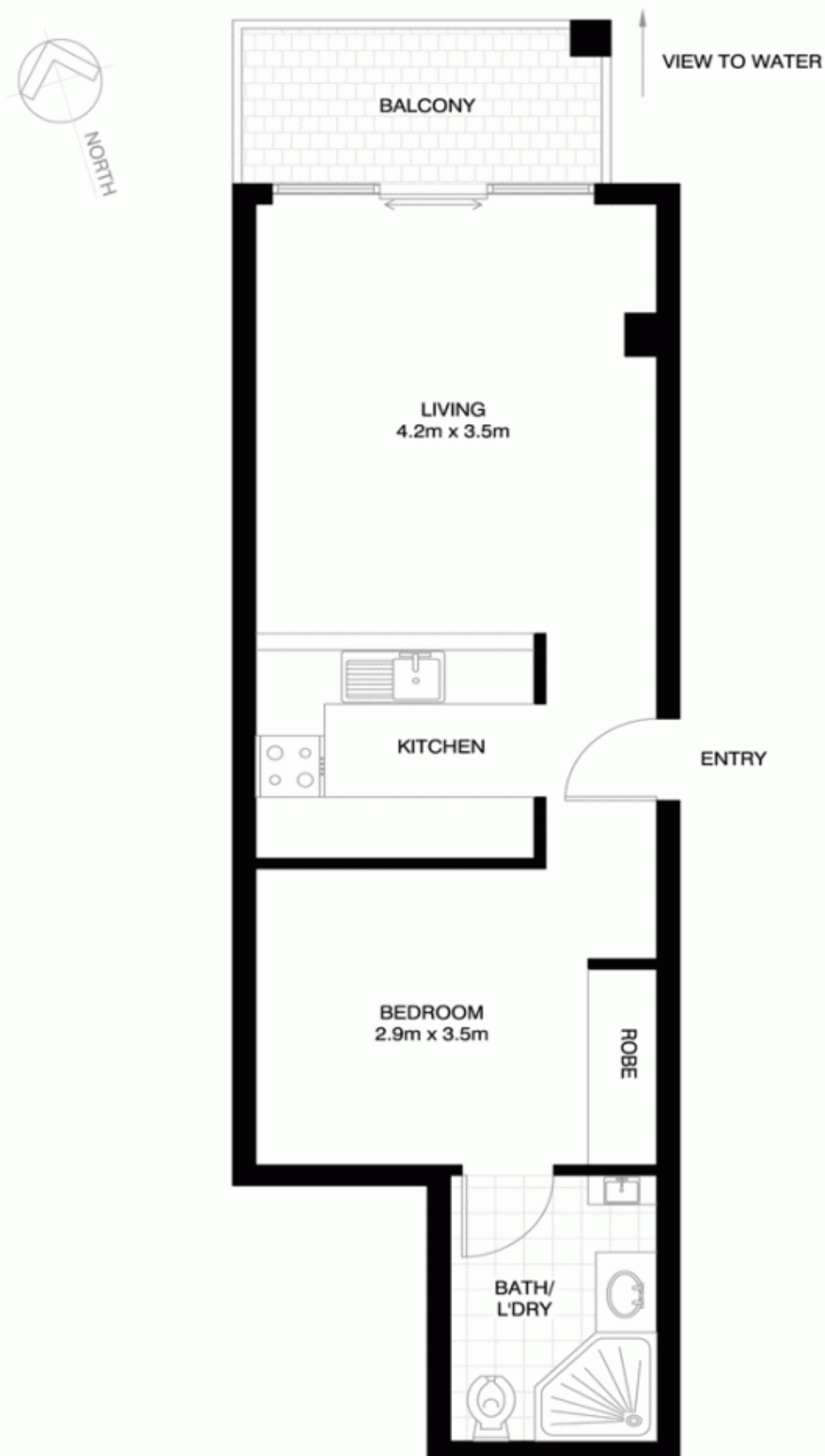
Price : SOLD FOR \$405,000
Building Size : 4 sqm
View : <https://www.balmainrealty.com/1P0922>



Bronte Brown
(02) 9818 8888

9818 8000

REALTY International
"World Wide Web of Buyers & Sellers"



ROZELLE
107/26 WARAYAMA PLACE
"Crestview" - Balmain Shores

*NOTE: ALL DIMENSIONS SHOWN ARE APPROXIMATE AND SHOULD ONLY BE USED AS A GUIDE. NOT TO SCALE.