



114/5 Wulumay Close ROZELLE NSW

2 2 2

Peacefully nestled on the waterfront of the 'Balmain Cove' complex overlooking lush manicured gardens this delightful apartment features living spaces of exceptionally large proportions which take in stunning harbour views with a lovely sun drenched due north aspect toward Snapper & Spectacle Islands and offers an additional home office/study room.

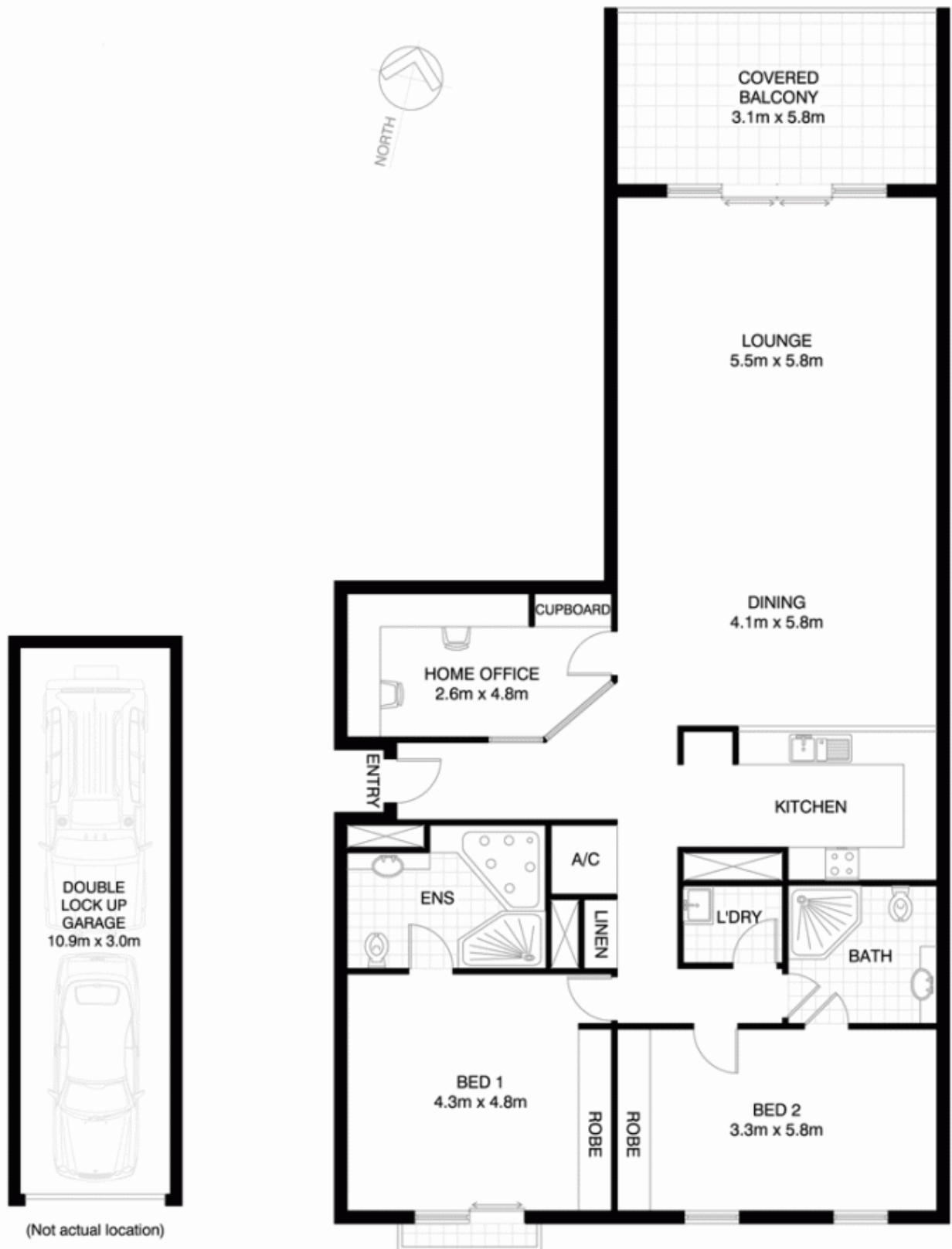
Property features include;

- Additional home office complete with two work stations, custom shelving, drawers & cupboards
- Large open plan living spaces that flow onto a covered north facing balcony with panoramic harbour views
- Well appointed kitchen with granite benchtops, stainless kitchen appliances including gas cooktop, oven, rangehood exhaust, microwave & dishwasher

Price : SOLD FOR \$1,345,000
Building Size : 22 sqm
View : <https://www.balmainrealty.com/1P0924>



Scott Robertson
(02) 9818 8888



ROZELLE
114/5 WULUMAY CLOSE
"THE ESPLANADES" - BALMAIN COVE

*NOTE: ALL DIMENSIONS SHOWN ARE APPROXIMATE AND SHOULD ONLY BE USED AS A GUIDE. NOT TO SCALE.