



804/32 Warayama Place ROZELLE NSW

1 1 1

This top floor refurbished apartment including air-conditioning, new carpeting & fresh paint throughout is located within the prestigious Balmain Shores waterfront complex & provides excellent views of Iron Cove Bay or the tranquility of Bridgewater Park. You get the lifestyle benefits of access to resort like facilities including two swimming pools & state of the art gymnasium, easy access to public transport & the abundance of waterfront parks & walkways and not to mention its only a moments stroll from Rozelle & Balmain villages vibrant mix of cafes, restaurants, pubs & boutique shopping. What more could you ask for?

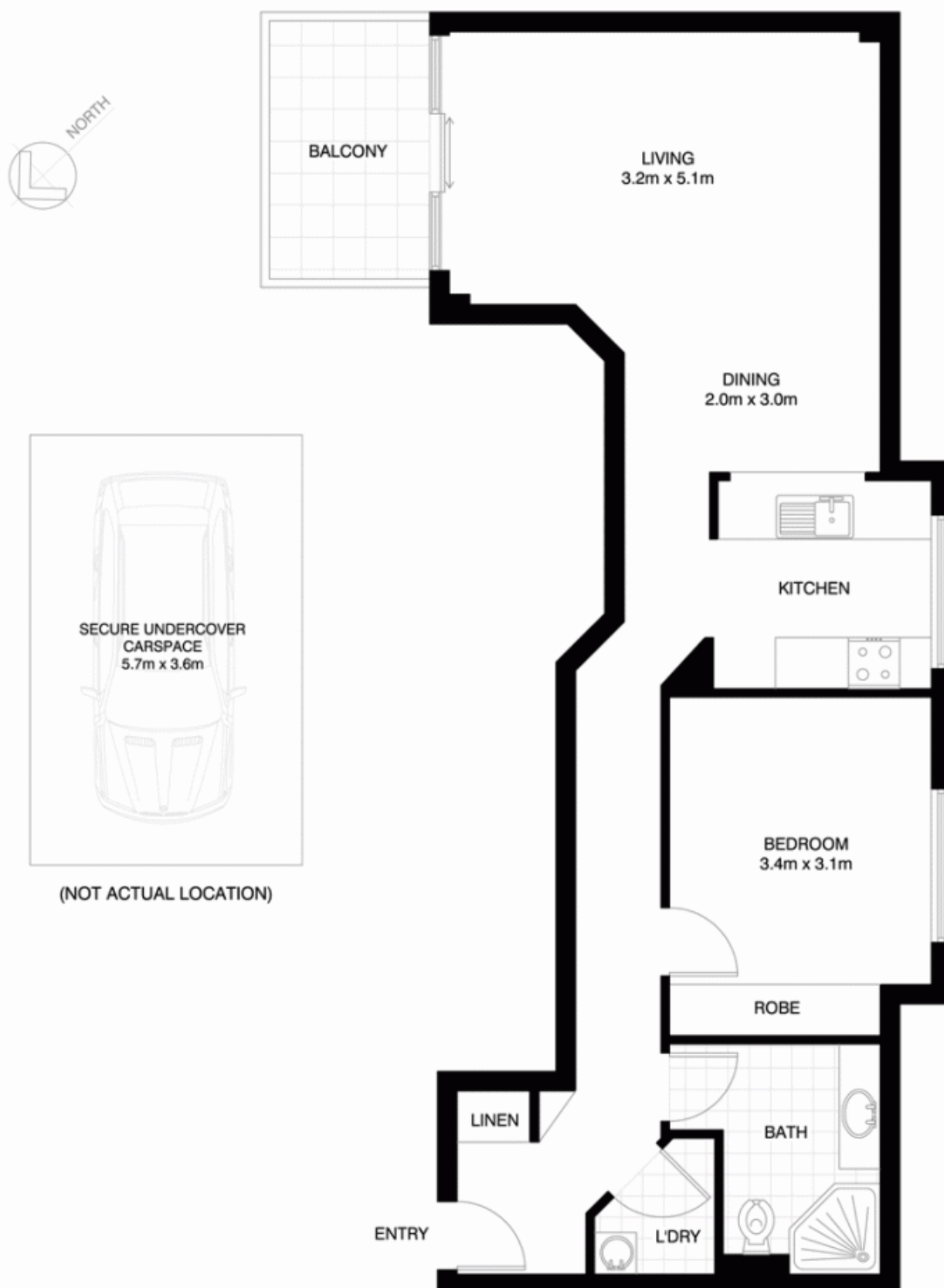
This property is ready to make your new home or the opportunity for a rock solid investment.

Property features include;

Price : SOLD FOR \$570,000
Building Size : 9 sqm
View : <https://www.balmainrealty.com/1P0932>



Bronte Brown
(02) 9818 8888



ROZELLE
804/32 WARAYAMA PLACE
"The Anchorage" - Balmain Shores

*NOTE: ALL DIMENSIONS SHOWN ARE APPROXIMATE AND SHOULD ONLY BE USED AS A GUIDE. NOT TO SCALE.