



**901/27 Margaret Street ROZELLE NSW**

**2 2 2**

Offering a highly sought after floor plan featuring 2 bedrooms, 2 bathrooms & 2 secure undercover car spaces with ducted air-conditioning throughout this elevated security apartment boasts sensational harbour views and offers generous living spaces & bedrooms with all rooms opening out onto a secluded sun drenched balcony.

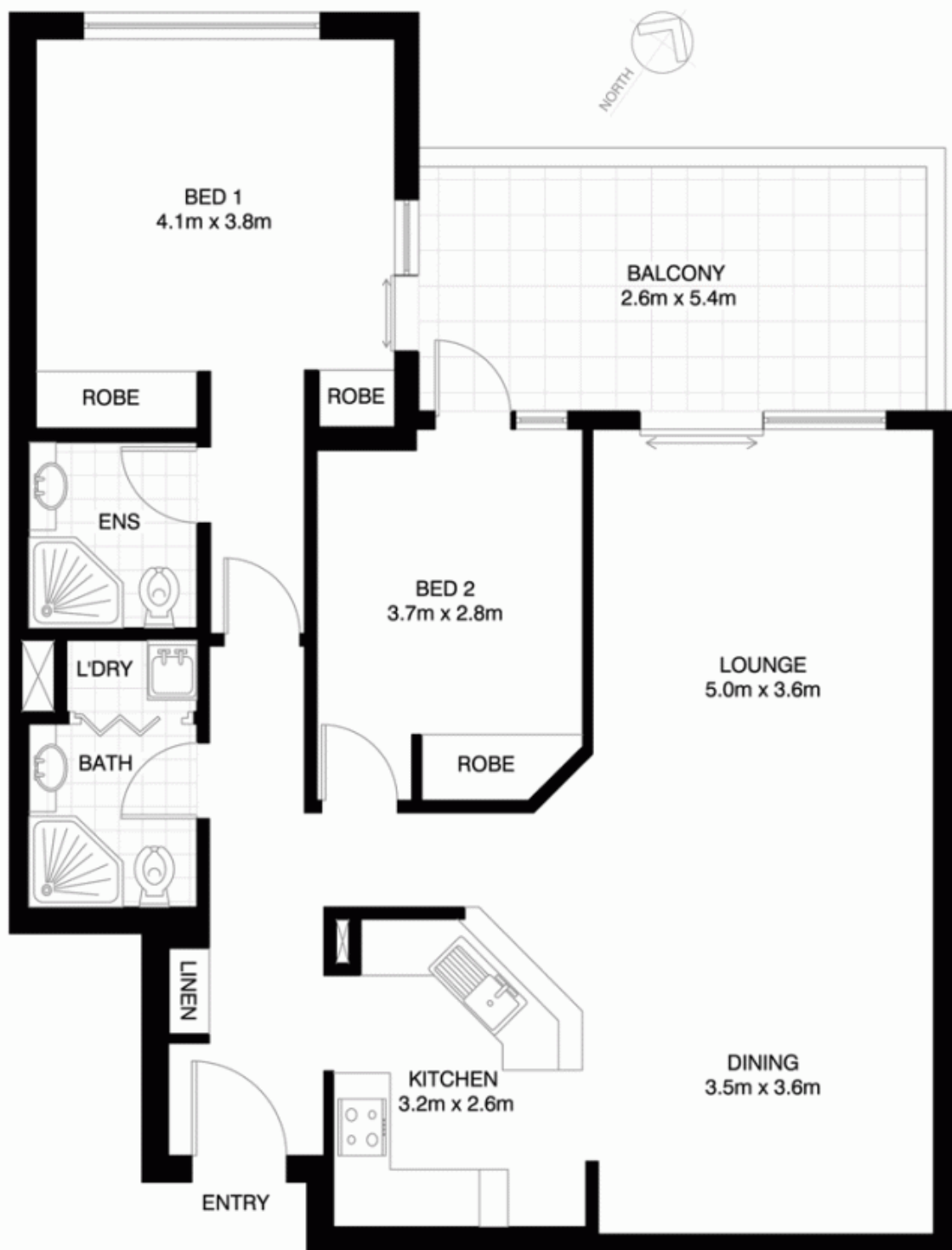
Found within the popular Balmain Shores waterfront complex this fabulous apartment offers a lifestyle opportunity second to none. Residents enjoy access to resort like swimming pools & a gymnasium with the 'Bay Run' offering over 8kms of walking/cycling trails along the harbour foreshore.

Located just a short stroll from Balmain & Rozelle villages offering an abundance of stylish cafes, restaurants, pubs & boutique shopping with express public transport from your

**Price** : SOLD FOR \$930,000  
**Building Size** : 14 sqm  
**View** : <https://www.balmainrealty.com/1P0933>



**Scott Robertson**  
**(02) 9818 8888**



(NOT ACTUAL LOCATION)

**ROZELLE**  
**901/27 MARGARET STREET**  
**"Quarter Deck" - BalmainShores**

\*NOTE: ALL DIMENSIONS SHOWN ARE APPROXIMATE AND SHOULD ONLY BE USED AS A GUIDE. NOT TO SCALE.