



## 104/5 Wulumay Close ROZELLE NSW

4 2 2

Featuring postcard harbour views enhanced by the gentle sounds of the lapping waters of the bay and a lovely outlook over the manicured gardens this absolute waterfront apartment offers contemporary interiors of generous proportions & spectacular views from the moment the front door opens.

Set within the prestigious 'Balmain Cove' waterfront resort like complex with swimming pools, gymnasium & marina berth facilities for the boating enthusiast this apartment is found only a short stroll from cafes, restaurants, pubs, boutique shopping, express public transport & schools.

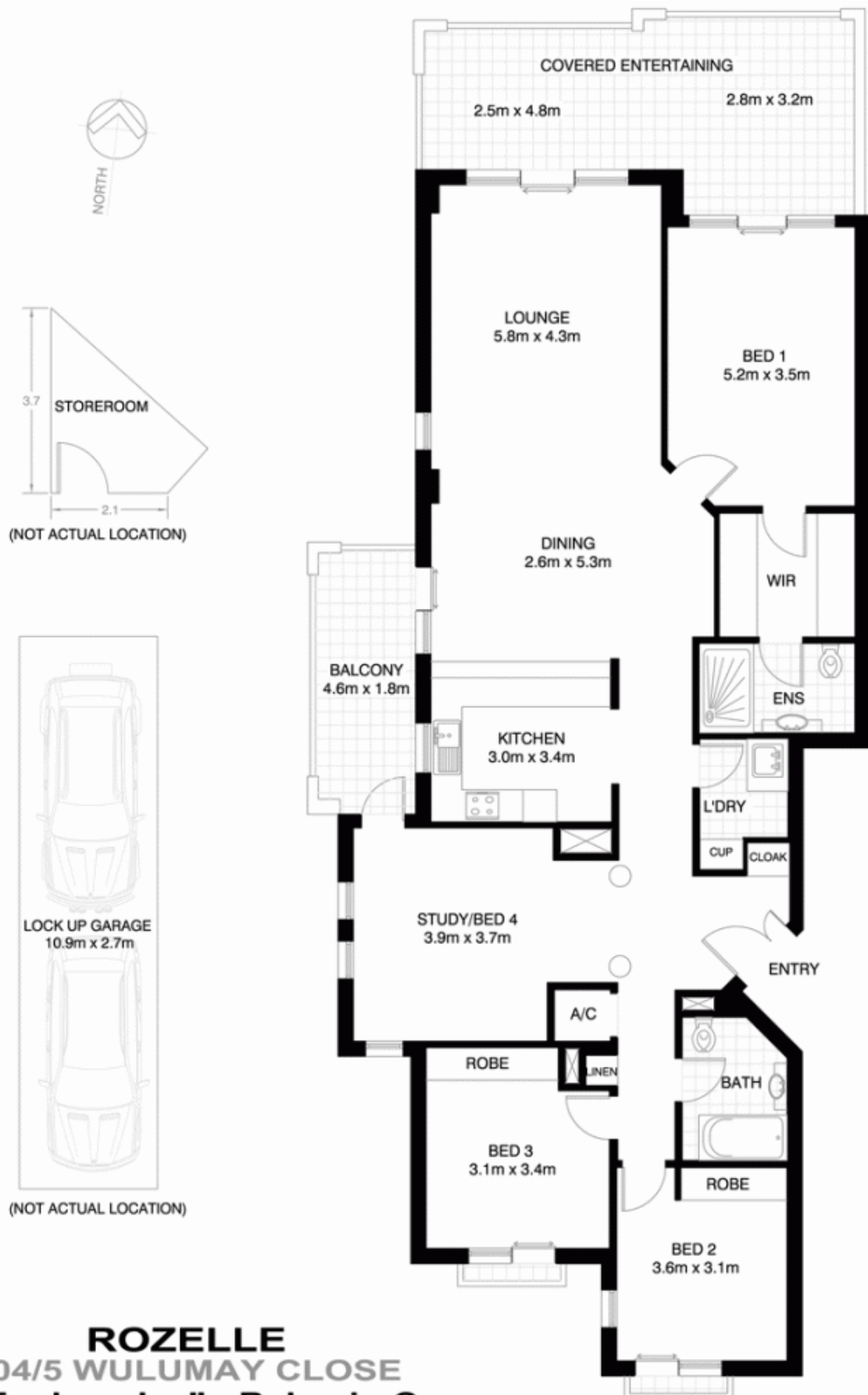
Property features include;

- Large home office/4th bedroom or ideal second living/dining space

**Price** : PRICE WITHHELD  
**Building Size** : 24 sqm  
**View** : <https://www.balmainrealty.com/1P0935>



**Scott Robertson**  
**(02) 9818 8888**



**ROZELLE**  
**104/5 WULUMAY CLOSE**  
**"The Esplanades" - Balmain Cove**

\*NOTE: ALL DIMENSIONS SHOWN ARE APPROXIMATE AND SHOULD ONLY BE USED AS A GUIDE. NOT TO SCALE.