

3/29 Lilyfield Road Rozelle NSW

2 1 1

Offering spacious open plan living spaces that flow onto a large sun drenched north facing garden courtyard this well appointed 2 bedroom apartment is just a short stroll to express public transport including buses & light rail, parkland reserves & Rozelle's abundance of cafes, pubs & restaurants.

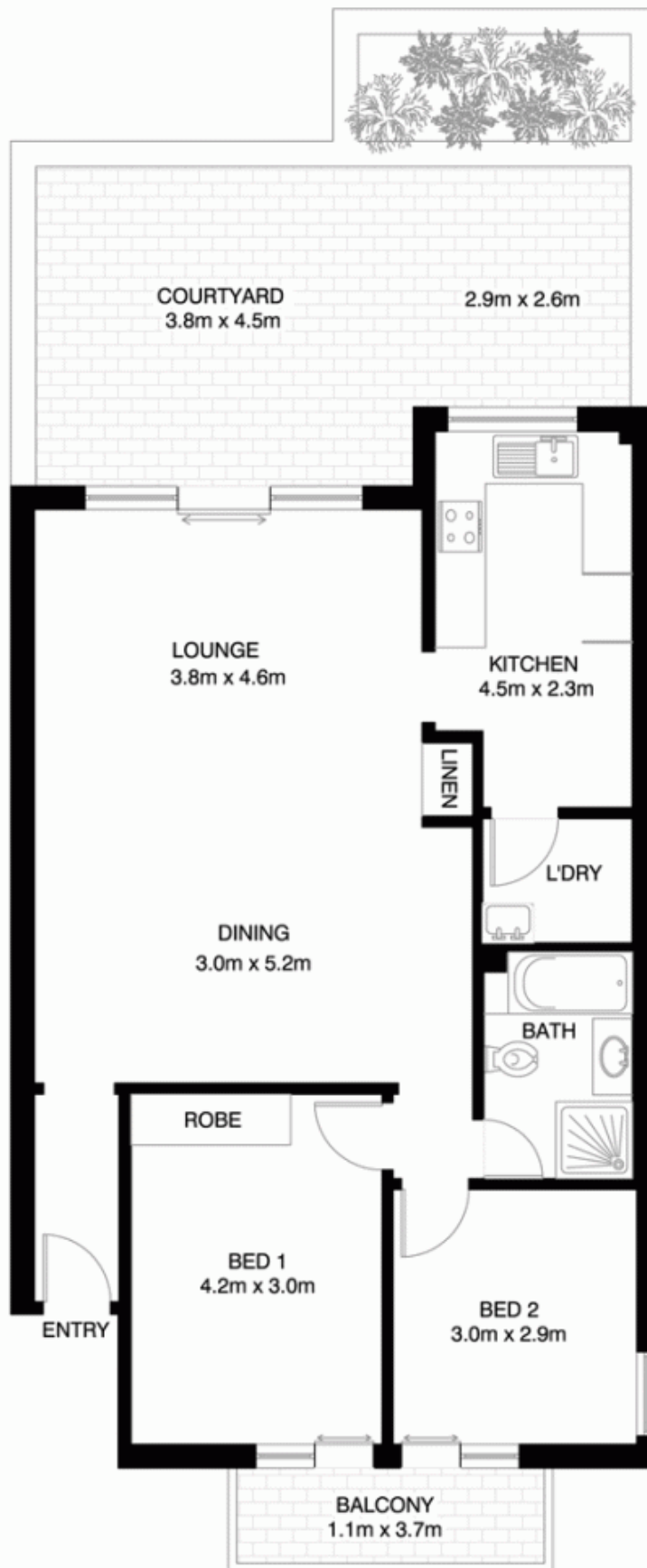
Property features;

- Large open plan living spaces
- Private north facing garden courtyard
- Well presented & functional eat-in kitchen
- Two double sized bedrooms featuring access onto a balcony with main bedroom featuring built-in wardrobes
- Bathroom features separate bath tub & shower
- Internal laundry
- Small secure block of only 6 apartments

Price : SOLD FOR \$582,500
Building Size : 14 sqm
View : <https://www.balmainrealty.com/1P0937>



Scott Robertson
(02) 9818 8888



ROZELLE

3/29 LILYFIELD ROAD

*NOTE: ALL DIMENSIONS SHOWN ARE APPROXIMATE AND SHOULD ONLY BE USED AS A GUIDE. NOT TO SCALE.