



Level 4/5 Warayama Place Rozelle NSW

2  2  1 

PROPERTY FEATURES:

- Recently refurbished with floorboards throughout
- Two large bedrooms with mirrored built-in wardrobes
- Entertaining balcony with leafy outlook
- Spacious separate lounge and dining area
- Gourmet kitchen with gas cooking & dishwasher
- Stylish modern bathrooms, main bathroom with bath
- Internal laundry
- Security car space with lift access and storage box

Price : \$730 per week

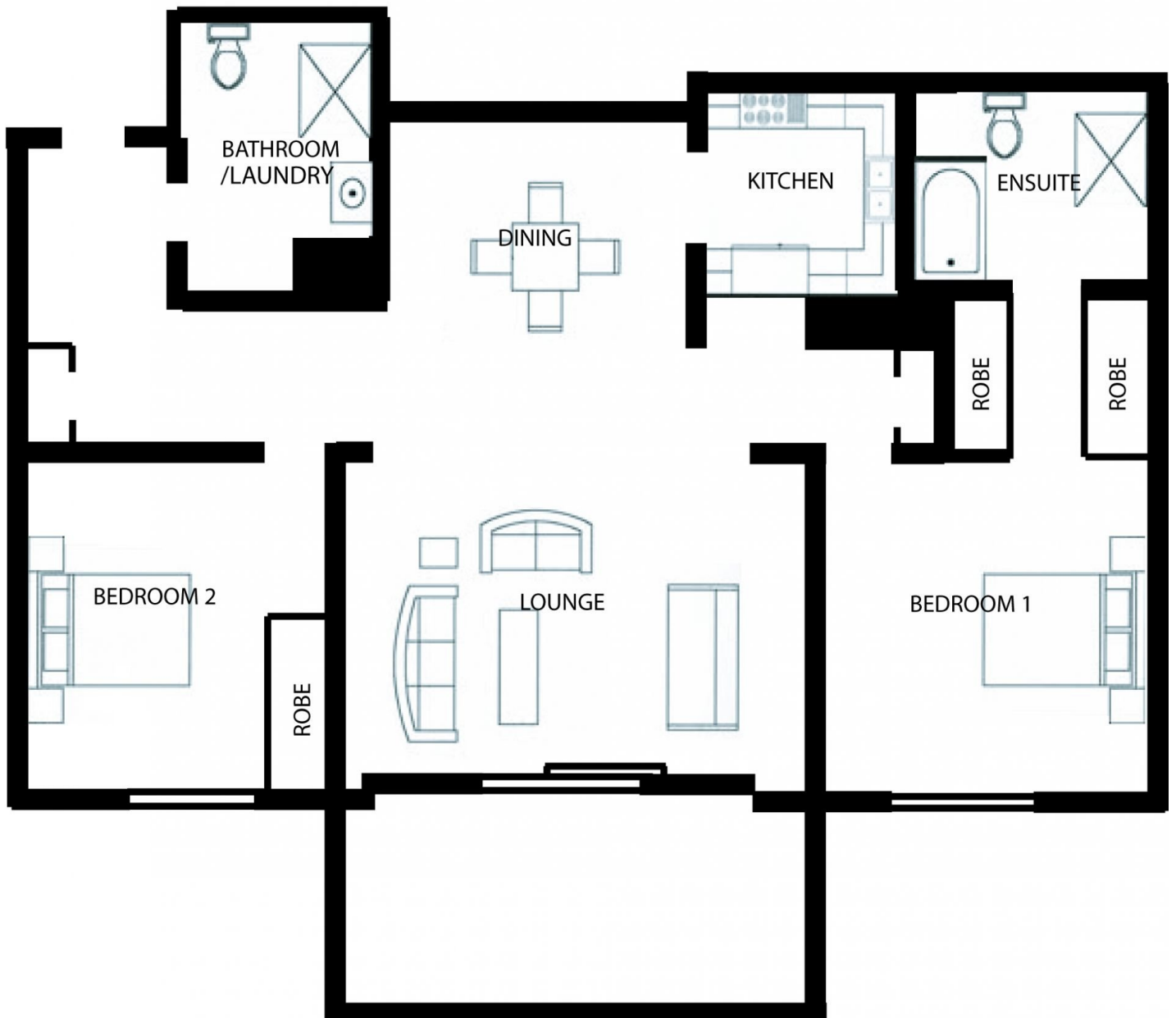
View : <https://www.balmainrealty.com/1P0975>

LIFESTYLE FEATURES:

- Access to Balmain Shores facilities including indoor lap pool, outdoor plunge pool, well equipped gymnasium, spa & sauna
- Short distance from the CBD with express buses to the city
- Close by is the Bay Run, Parkland, Darling Streets cafes,



Bronte Brown
(02) 9818 8888



409/5 WARAYAMA PLACE, BALMAIN SHORES

Images & Floorplan illustration indicative only. Dimensions are approximate and not to scale. Refer to contract of sale for actual inclusions.