



Level 7/29 Margaret Street Rozelle NSW

3 **2** **2**

PROPERTY FEATURES:

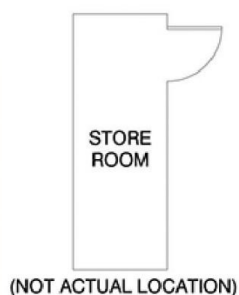
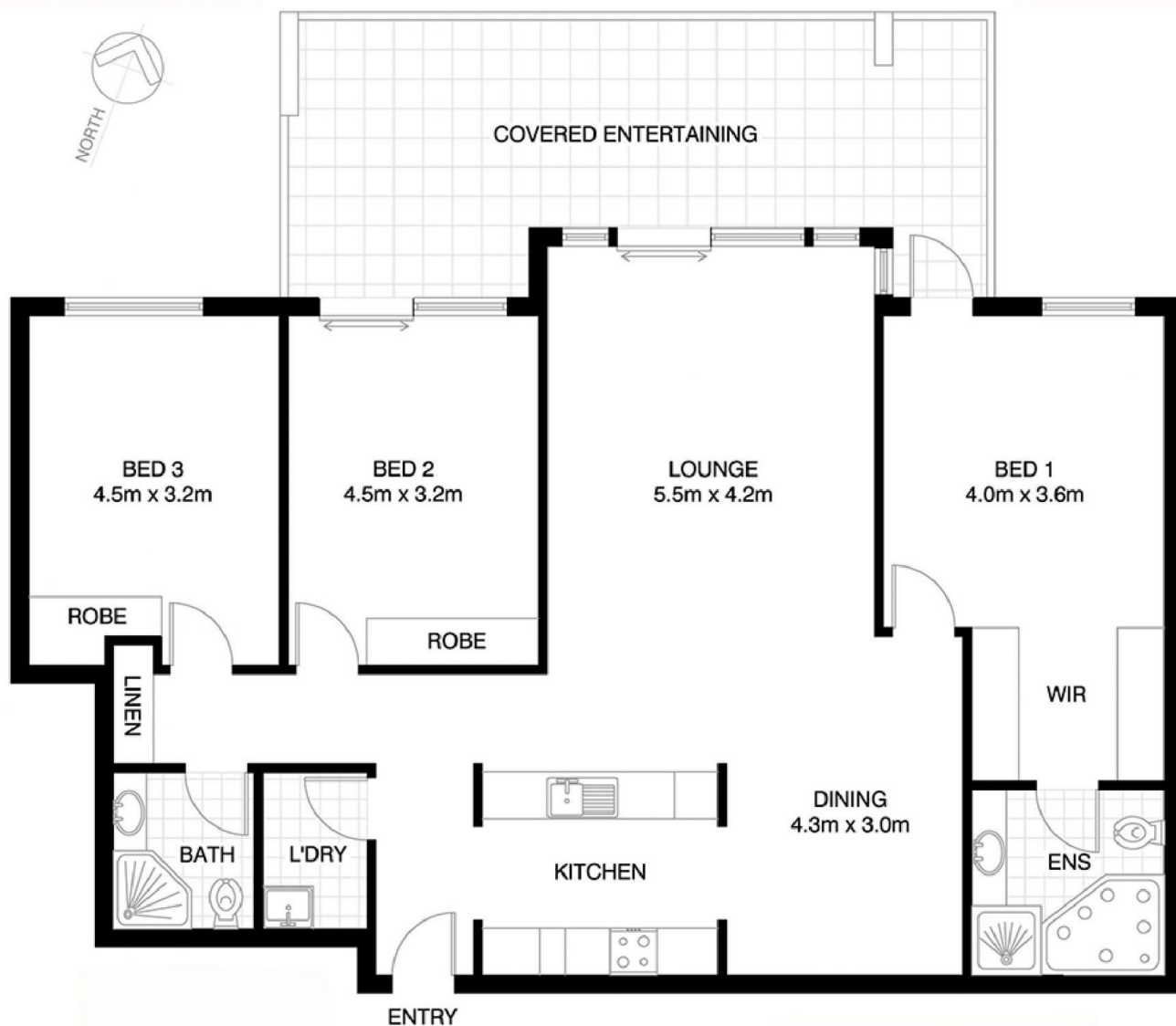
- Stunning 180 degree northerly harbour views from every room
- Extensive outdoor entertaining balcony
- Spacious sunny open plan living with northerly aspect
- Modern kitchen with gas cooktop, microwave & dishwasher
- Master bedroom features walk-in wardrobes & access onto balcony
- En-suite bathroom with spa bath & separate shower
- Second & third bedroom with mirrored built-in robes
- Internal laundry with clothes dryer
- Ducted air-conditioning throughout
- Two secure under cover car spaces (side by side)
- Storage cage

Price : For Rent \$1050 pw
Building Size : 178 sqm
View : <https://www.balmainrealty.com/1P0990>



Bronte Brown
(02) 9818 8888

LIFESTYLE FEATURES:



ROZELLE
702/29 MARGARET STREET
"Waters Edge" - BalmainShores

*NOTE: ALL DIMENSIONS SHOWN ARE APPROXIMATE AND SHOULD ONLY BE USED AS A GUIDE. NOT TO SCALE.