



Rozelle

2 🛏 2 🚿 2 🚗

PROPERTY FEATURES:

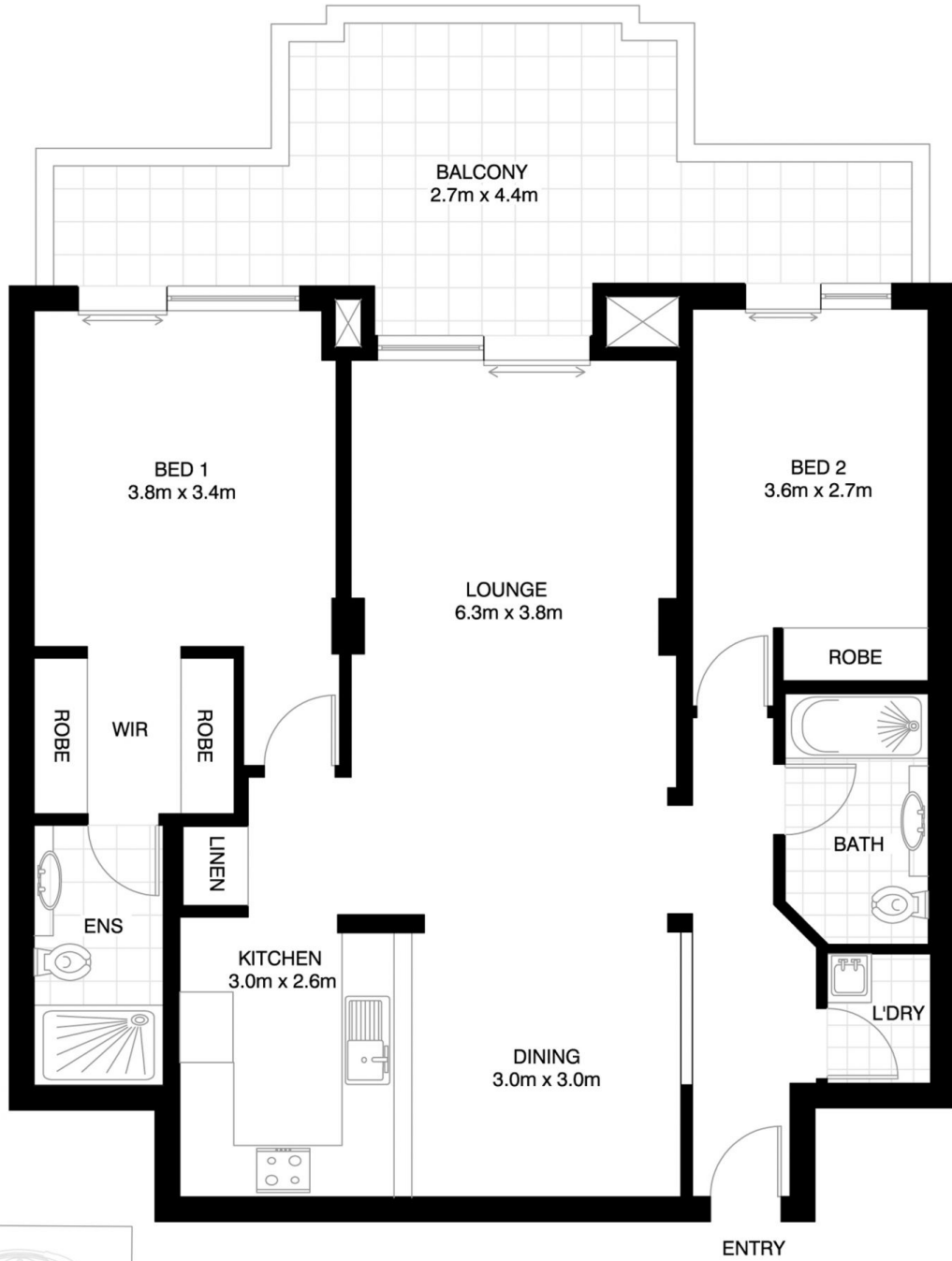
- Spacious combined living areas
- Large entertaining balcony with water views
- Main bedroom with mirrored built-in wardrobes & ensuite bathroom
- Modern kitchen with stainless steel appliances, gas cooking + dishwasher
- Internal laundry with clothes dryer
- Ducted air-conditioning throughout
- Security parking with direct lift access to apartment level
- Short distance from the CBD, ideal location for public transport with express buses to the city
- Access to resort facilities including indoor lap pool, outdoor plunge pool, well equipped gymnasium, spa & sauna
- Close by is the Bay Run, Parkland, Darling Streets cafes, restaurants, boutique shopping & traditional pubs

Price : \$730 per week

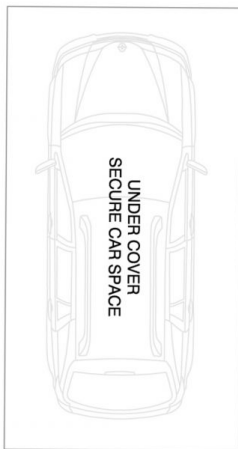
View : <https://www.balmainrealty.com/1P1002>



Bronte Brown
(02) 9818 8888



(NOT ACTUAL LOCATION)



ROZELLE
205/30 WARAYAMA PLACE
"Anchorage" - Balmain Shores