




Level 3/5 Wulumay Close Rozelle NSW

2  2  2 

PROPERTY FEATURES:

- Brand new paint & carpet throughout
- 173 sqm of living space
- Large entertaining terrace with sunny northerly aspect
- Additional study/media room ideal home office
- Gourmet kitchen with dishwasher & gas cooking
- 2 spacious bedrooms with built-in wardrobes
- 2 exquisite bathrooms - master en-suite featuring spa bath & shower
- Ducted reverse cycle air-conditioning
- Double lock up garage with ample storage
- Spacious open plan living areas
- Internal laundry with clothes dryer

LIFESTYLE FEATURES:

- Access to the Balmain Cove facilities including 2 outdoor pools, gymnasium & sauna
- Approx 3.8km from the QVB in the Sydney CBD with express buses to the city from Victoria Road
- Approx 0.5km to the Bay Run & Bridgewater Park
- Approx 1.4km to Darling Street's cafes, restaurants, boutique shopping & traditional pubs

AVAILABLE: For Immediate Tenancy

LEASE: 6 month lease preferred; other lease terms subject to application

INSPECTIONS: Please see inspection times as advertised or call 9818 8888 to arrange and appointment

NO PETS

* Please apply to agent for full list of furniture inclusions

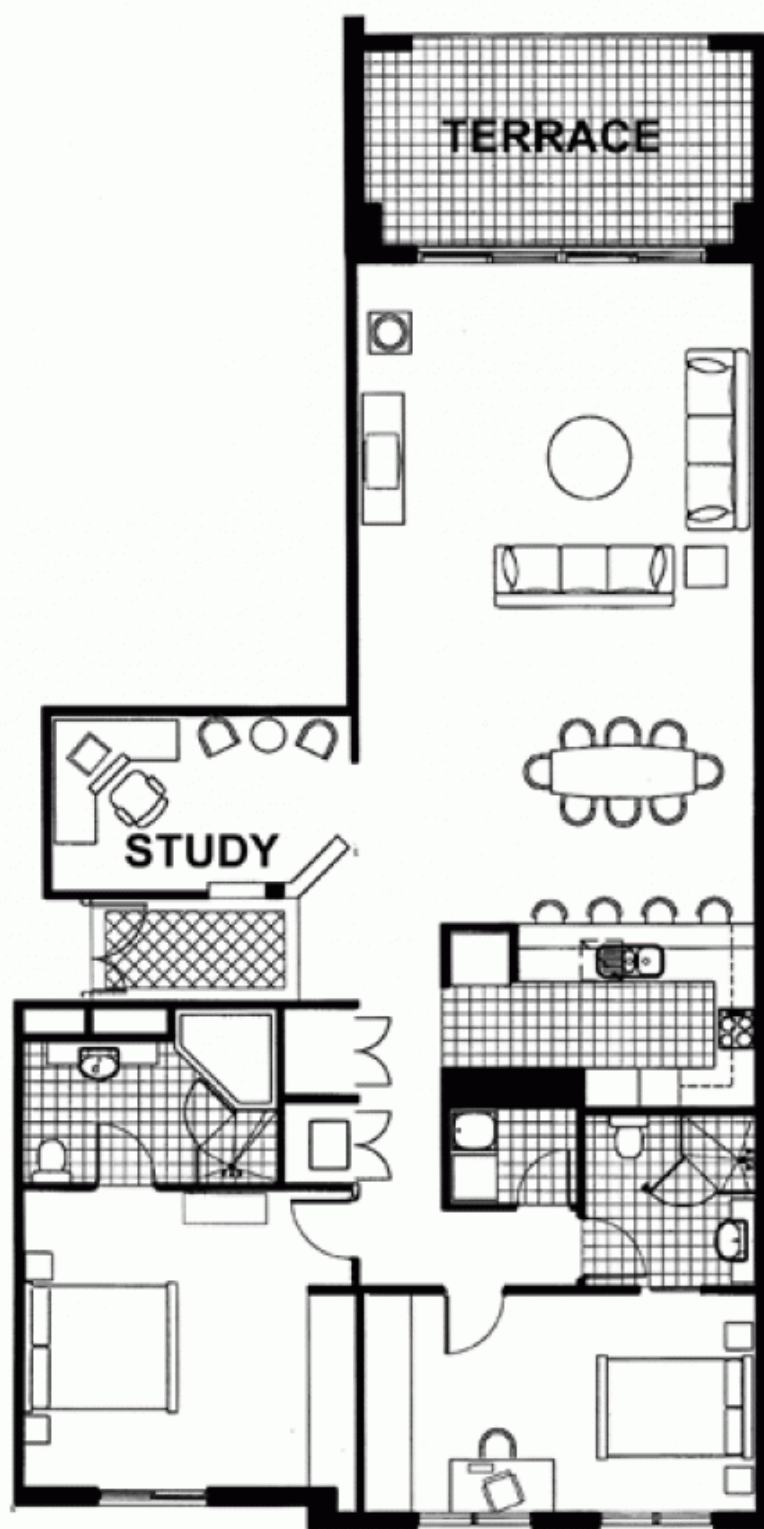
(Every precaution has been taken to establish accuracy of the above information but does not constitute any representation by the landlord or agent)

Price : \$1000 per week

View : <https://www.balmainrealty.com/1P1003>



Bronte Brown
(02) 9818 8888



REALTY International

9818 8000

"World Wide Web of Buyers & Sellers"®

