



Retail/41 Terry Street Rozelle NSW

Available NOW....

Modern Retail/ Office/Cafe Space For Lease with the option to subdivided;

The rent for 100% of the space is \$800pw plus GST plus 100% of outgoings and includes 2 car secure car spaces.

The rent for the front half of the space is \$600pw plus GST plus 50% of outgoings and includes 1 secure car space.

The following are 100% of outgoings.

- Strata \$1,185 per quarter
- Council \$298 per quarter
- Water \$248 plus water usage per quarter

Position your business amongst a thriving high income

Price : \$600-\$800 pw
Building Size : 150 sqm
View : <https://www.balmainrealty.com/1P1060>



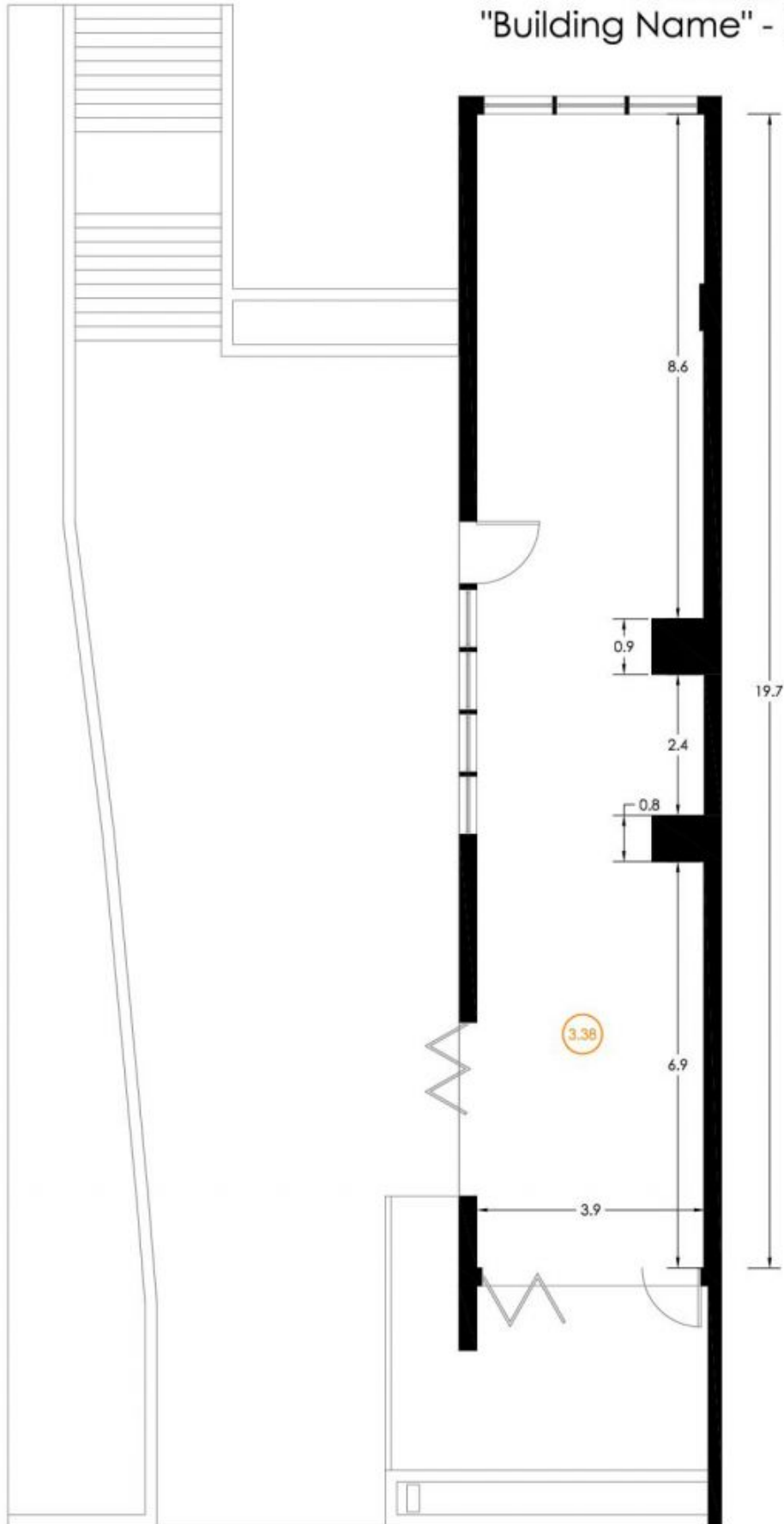
Scott Robertson
(02) 9818 8888



PLEASE SHOW ONLY INDICATORS OF LAYOUT, DIMENSIONS AND APPROXIMATE

SUBURB
ADDRESS

"Building Name" - Location



*PLANS SHOWN ONLY INDICATIVE OF LAYOUT. DIMENSIONS ARE APPROXIMATE.