



## 18/3 Wulumay Close Rozelle NSW

2 🏠 2 🚗 2 🚗

Without doubt this would be one of the largest private marina berths available on Sydney Harbour. Offered for sale for the first time since construction, this extremely rare & unique opportunity to purchase a 45m Marina Berth that may potentially accommodate up to a 145ft Super-Yacht or alternatively several smaller craft, with a superb waterfront garden apartment in the blue ribbon 'Balmain Cove' north facing waterfront complex.

This is a once in a lifetime opportunity to secure this truly unique "Ultimate Lifestyle Package".

Marina Berth features include;

- 45 metre marina berth. The largest berth on this marina facility
- Potentially accommodate up to a 145ft Super-Yacht or alternatively several yachts and cruisers subject to NSW

**Price** : SOLD  
**Building Size** : 283 sqm  
**View** : <https://www.balmainrealty.com/1P1090>



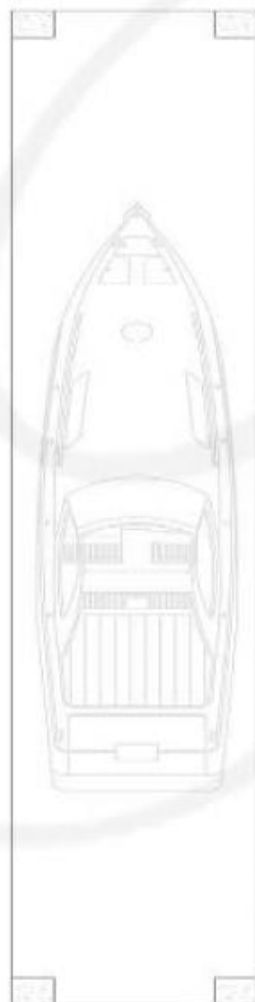
**Scott Robertson**  
(02) 9818 8888



**Wayne Robertson**  
(02) 9818 8888



(NOT ACTUAL LOCATION)

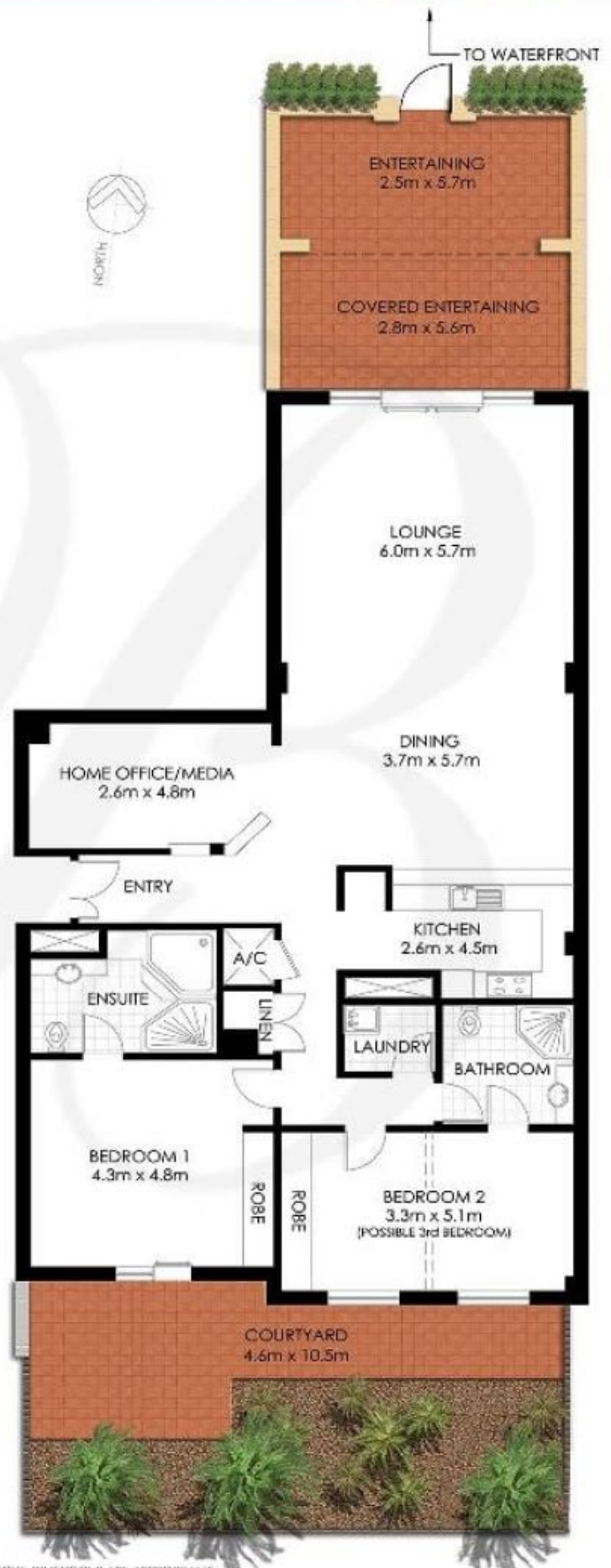


45 metre MARINA BERTH,  
BALMAIN COVE MARINA-  
LOT 1 SP61740  
(NOT TO SCALE)

**ROZELLE**

18/3 WULUMAY CLOSE

"The Landings" - Balmain Cove



\*PLANS SHOWN ONLY INDICATIVE OF LAYOUT. DIMENSIONS ARE APPROXIMATE.