



705/27 Margaret Street Rozelle NSW

1 🛏 1 🚿 1 🚗

Entertaining is a breeze from this designer apartment featuring a substantial 35sqm garden courtyard accessible from both the living & bedroom.

Positioned so close to the action only moments from Darling Street's cafes, restaurants, transport & the harbour foreshore this well appointed one bedroom apartment found within in the 'Balmain Shores' complex offers a relaxed easy going lifestyle.

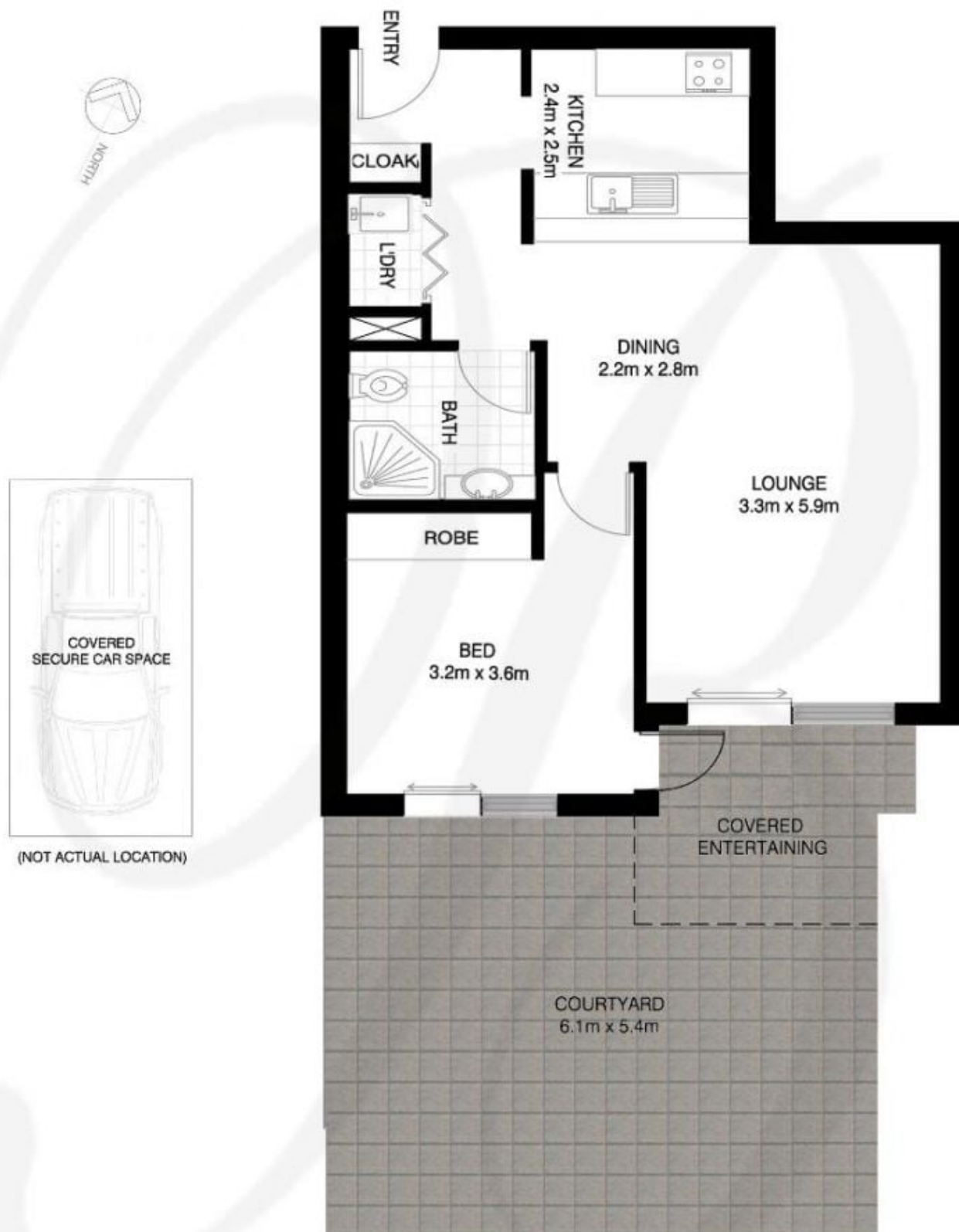
Property features include;

- Spacious open plan interiors that open on to your own private garden courtyard
- Generous sized bedroom with mirrored built-in wardrobes & direct access onto courtyard
- Stylishly appointed kitchen featuring stainless appliances

Price : SOLD \$600,000
Building Size : 103 sqm
View : <https://www.balmainrealty.com/1P1151>



Scott Robertson
(02) 9818 8888



ROZELLE
705/27 MARGARET STREET
"Quarter Deck" - Balmain Shores

*NOTE: ALL DIMENSIONS SHOWN ARE APPROXIMATE AND SHOULD ONLY BE USED AS A GUIDE. NOT TO SCALE.