



## Level 2/52/3 Wulumay Close Rozelle NSW

3 2 2

Recently Refurbished 3 Bedroom Apartment with Wrap-Around Terrace & Water Views

### PROPERTY FEATURES:

- Generous open plan living/dining area
- Huge sunny L-shaped terrace ideal for entertaining
- Water views across Iron Cove Bay
- Gourmet kitchen with gas cooking & dishwasher
- Huge master bedroom with Juliette balcony & walk in wardrobe
- Full ensuite marble bathroom with separate bath & shower
- 2nd & 3rd bedrooms also with mirrored built-in wardrobes
- Main bathroom also with separate shower & bath tub
- Internal laundry with clothes dryer
- Ducted air conditioning
- Tiled entry with walk in storage closet
- Tandem lock up garage with direct lift access to

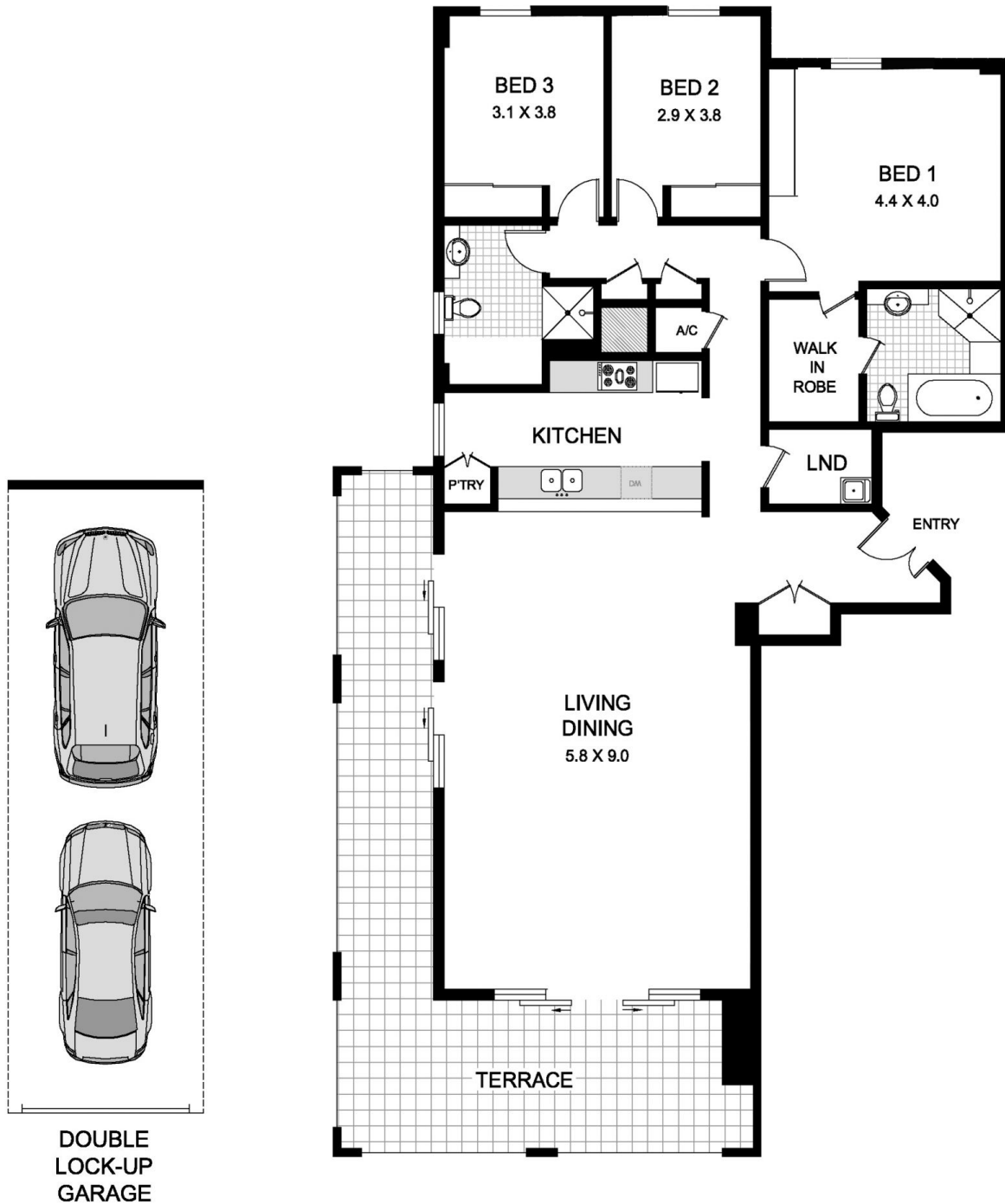
**Price** : \$1,050 per week

**View** : <https://www.balmainrealty.com/1P1178>



**Bronte Brown**  
**(02) 9818 8888**

## 52/3 Wulumay Close 'The Annex, Balmain Cove' Rozelle



\*NOTE: ALL DIMENSIONS SHOWN ARE APPROXIMATE AND SHOULD ONLY BE USED AS A GUIDE. NOT TO SCALE.