



Level 4/120/5 Wulumay Close Rozelle NSW

3 2 2

Luxury Top Floor Waterfront Apartment with Panoramic Water Views

PROPERTY FEATURES:

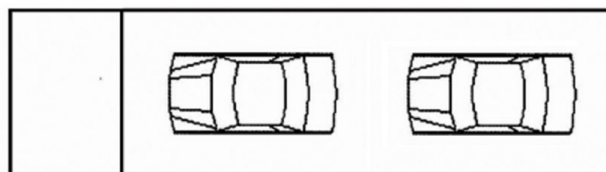
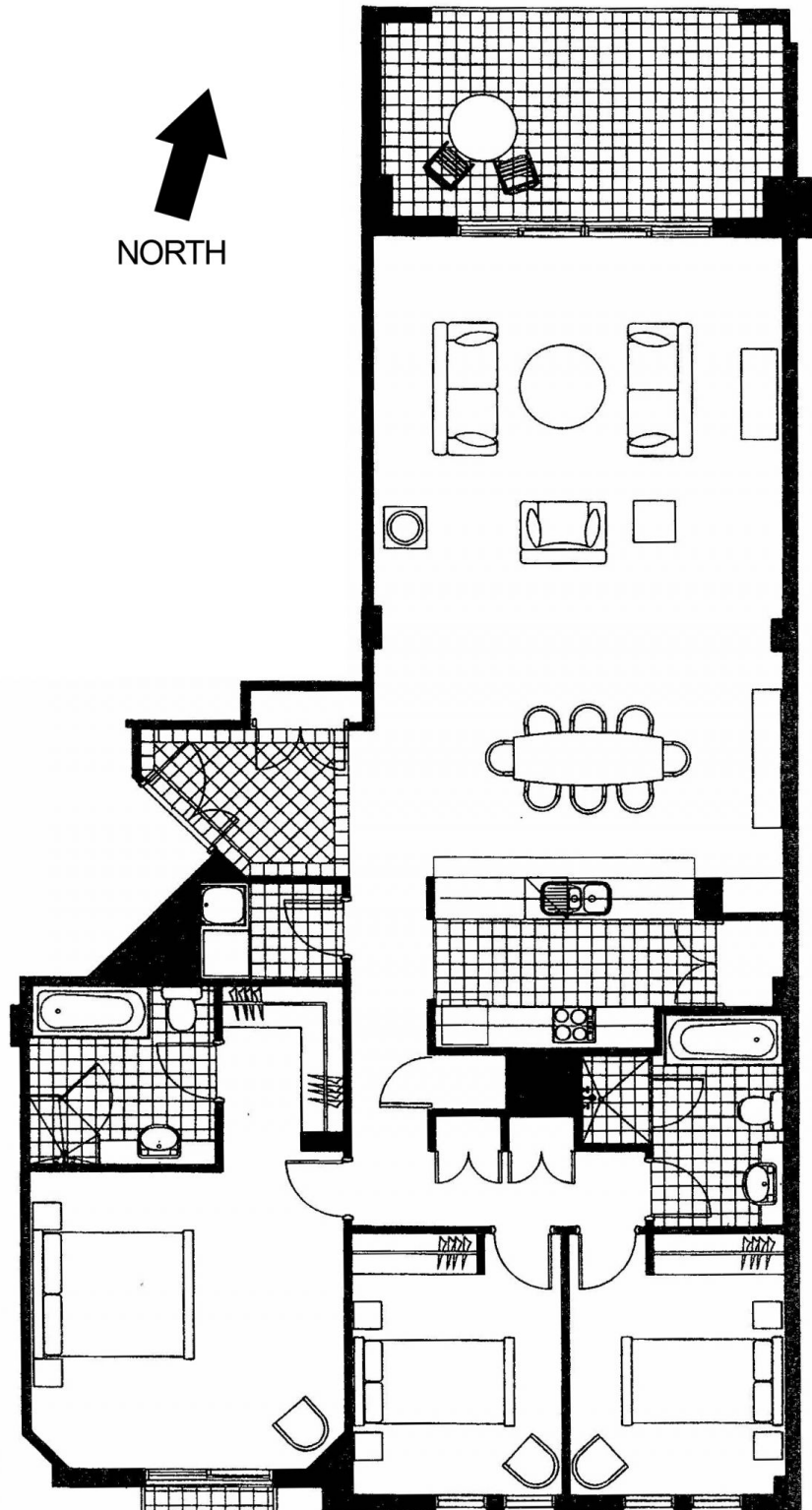
- Bright spacious open plan living/dining area of house like proportions
- Top floor position offering supreme privacy
- Sun filled due north-facing aspect
- Large entertaining balcony with stunning uninterrupted harbour views
- Modern interiors with marble flooring, low voltage lighting & plantation shutters
- Gourmet kitchen featuring spacious pantry, stainless appliances including gas cooking, rangehood & dishwasher
- King-sized master bedroom with walk-in wardrobes & en-suite with spa bath & separate shower
- Spacious 2nd & 3rd bedrooms both with built-in wardrobes with access to separate bathroom

Price : \$1,250 per week

View : <https://www.balmainrealty.com/1P1187>



Bronte Brown
(02) 9818 8888



DOUBLE LOCK UP GARAGE + STORAGE