



Level 1/29 Margaret Street Rozelle NSW

3  2  2 

Waterfront Apartment with a Huge 57sqm Sunny Northerly Terrace

Price : \$1,150 per week

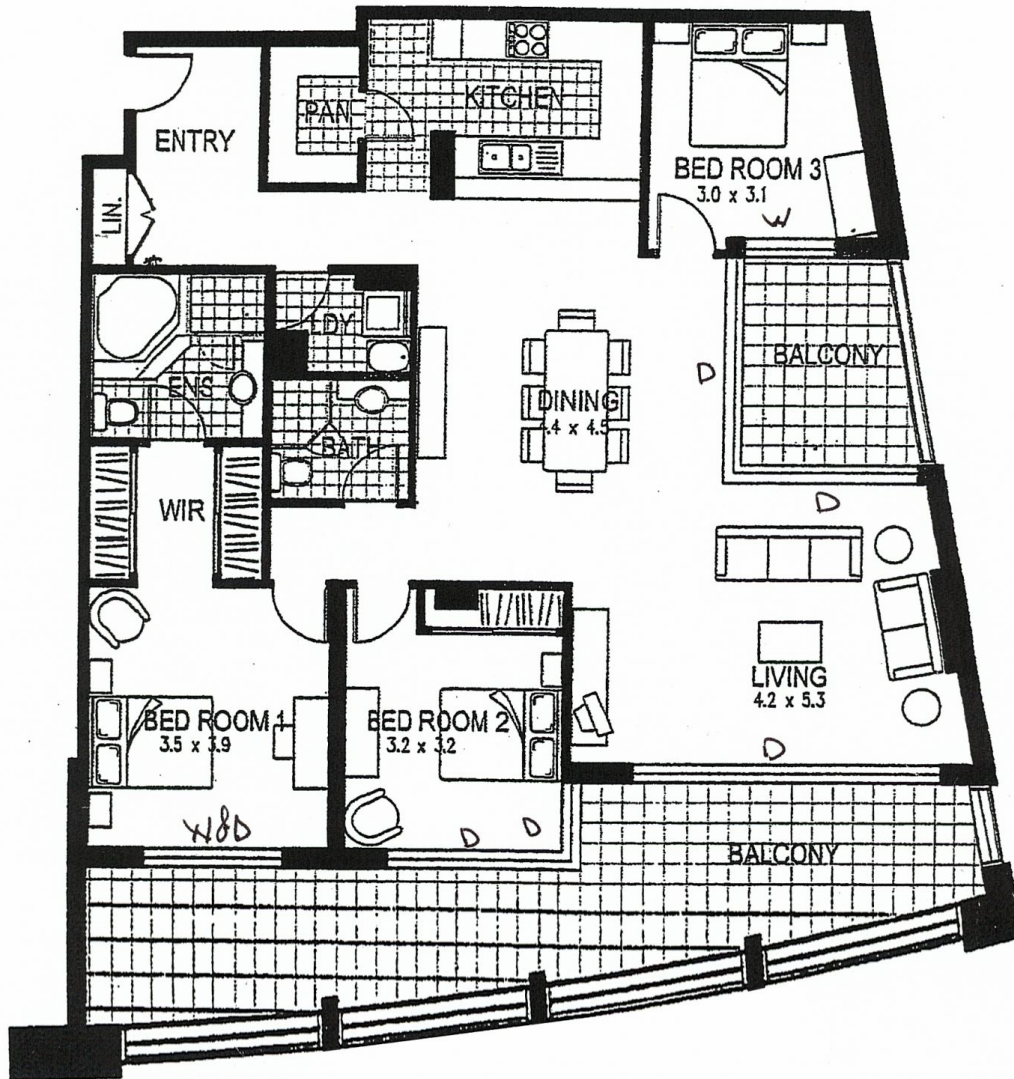
View : <https://www.balmainrealty.com/1P1203>

PROPERTY FEATURES:

- Spacious open plan living /dining room with 2 balconies
- Huge north-facing terrace with panoramic views across Iron Cove Bay
- Contemporary kitchen with dishwasher, range hood & large pantry
- Master bedroom features walk-in wardrobe, direct access to terrace, water views & ensuite bathroom with spa bath
- Queen size 2nd bedroom with water views & mirrored built-in wardrobe
- Double size 3rd bedroom or home office
- Internal laundry with clothes dryer
- Security parking with additional lock up 10sqm storage cage



Bronte Brown
(02) 9818 8888



'Watersedge'
101/29 Margaret Street
'Balmain Shores', Rozelle