



Level 2/207/43 Terry Street Rozelle NSW

1 1 1

Modern Executive Studio Apartment with Separate Bedroom Area, Secure Parking & Lock Up Storage Cage
PROPERTY FEATURES:

- Spacious & bright open plan living
- Split system air conditioning
- Sunny north facing balcony with peaceful outlook over tree-lined avenue
- Gourmet kitchen with pull out pantry, gas cook top & dishwasher
- Large bedroom area with mirrored built-in wardrobes
- Stylish modern bathroom
- Internal laundry with clothes dryer
- Secure undercover parking with direct lift access to apartment level
- Large lock up storage cage (approx 2.5m x 2.85m)

Price : \$500 per week

View : <https://www.balmainrealty.com/1P1236>

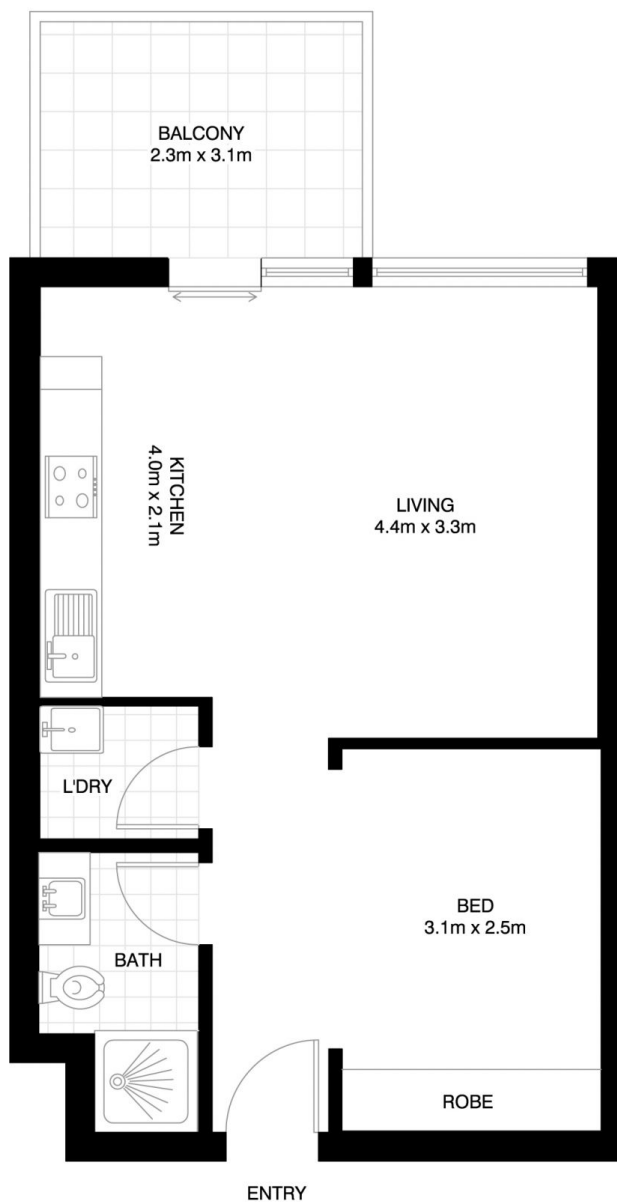


Bronte Brown
(02) 9818 8888

LIFESTYLE FEATURES:



(NOT ACTUAL LOCATION)



'Atelier' ROZELLE 207/43 TERRY STREET

*NOTE: ALL DIMENSIONS SHOWN ARE APPROXIMATE AND SHOULD ONLY BE USED AS A GUIDE. NOT TO SCALE.